

Allgemeine Informationen

Katalog-Nr.:

10998-2-AP

Größe:

150ul , Konzentration: 433 µg/ml durch die Bradford-Methode mit BSA als Standard;

Wirt:

Kaninchen

Isotyp:

IgG

Immunogen Katalognummer:

AG1453

GenBank-Zugangsnummer:

BC009368

GeneID (NCBI):

6602

Vollständiger Name:

SWI/SNF related, matrix associated, actin dependent regulator of chromatin, subfamily d, member 1

Berechnete Masse:

58 kDa

Beobachtete Masse:

58 kDa

Reinigungsmethode:

Antigen-Affinitätsreinigung

Empfohlene Verdünnungen:

WB 1:500-1:1000
IP 0.5-4.0 µg für IP und 1:500-1:1000 für WB
IHC 1:20-1:200
IF 1:20-1:200

Anwendungen

Geprüfte Anwendungen:

IF, IHC, IP, WB, ELISA

In Publikationen genannte Anwendungen:

CoIP, WB

Getestete Reaktivität:

Human, Maus, Ratte

Zitierte Arten:

Human, Maus

Hinweis-IHC: Antigenmaskierung mit TE-Puffer pH 9,0 empfohlen. (*) Wahlweise kann die Antigenmaskierung auch mit Citratpuffer pH 6,0 erfolgen.

Positivkontrollen:

WB : Maushirngewebe, humanes Hirngewebe, Jurkat-Zellen

IP : Maushirngewebe,

IHC : humanes Lymphomgewebe,

IF : SH-SY5Y-Zellen,

Hintergrundinformationen

SMARCD1 belongs to the nuclear SWI/SNF chromatin remodeling complex, which regulates transcription and interacts with nucleolin in the nucleus. In addition, it's a member of the neural progenitors-specific chromatin remodeling complex (npBAF complex) and the neuron-specific chromatin remodeling complex (nBAF complex). It possesses a SWIB domain which is homologous to and shares a common fold with the p53-binding domain of MDM2, a cell cycle regulator which interacts with NPM1. SMARCD1 has a strong influence on the Vitamin D-mediated transcriptional activity from an enhancer Vitamin D receptor element (VDRE). And it can mediate critical interactions between nuclear receptors and the BRG1/SMARCA4 chromatin-remodeling complex for transactivation. This antibody may have cross reaction with SMARCD2.

Bemerkenswerte Veröffentlichungen

Verfasser	Pubmed ID	Journal	Anwendung
Xu Zhu	32459350	Nucleic Acids Res	CoIP
Tongyu Liu	32404872	Nat Commun	WB
Shuo Chen	25819031	Cancer Lett	WB

Lagerung

Lagerungsbedingungen:

Bei -20°C lagern. Nach dem Versand ein Jahr lang stabil

Lagerungspuffer:

PBS mit 0.02% Natriumazid und 50% Glycerin pH 7.3.

Aliquotieren ist nicht notwendig bei -20°C Lagerung

*** 20ul-Größen enthalten 0.1% BSA

For technical support and original validation data for this product please contact:

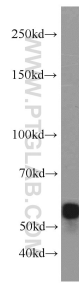
T: 1 (888) 4PTGLAB (1-888-478-4522) (toll free in USA), or 1(312) 455-8498 (outside USA)

E: proteintech@ptglab.com

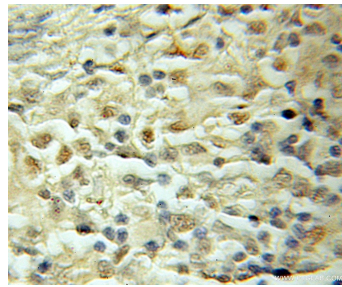
W: ptglab.com

This product is exclusively available under Proteintech Group brand and is not available to purchase from any other manufacturer.

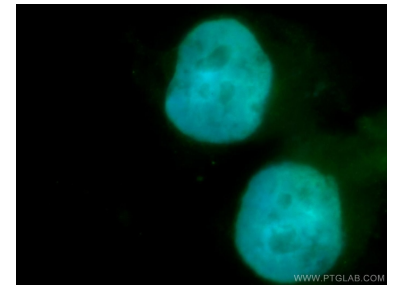
Ausgewählte Validierungsdaten



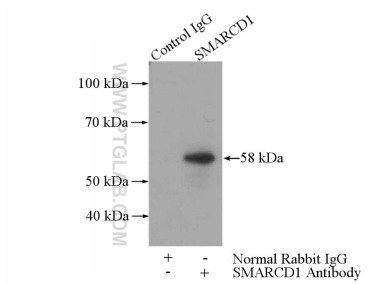
mouse brain tissue were subjected to SDS PAGE followed by western blot with 10998-2-AP (SMARCD1 antibody) at dilution of 1:600 incubated at room temperature for 1.5 hours.



Immunohistochemical analysis of paraffin-embedded human lymphoma using 10998-2-AP (SMARCD1 antibody) at dilution of 1:50 (under 10x lens).



Immunofluorescent analysis of SH-SY5Y cells, using SMARCD1 antibody 10998-2-AP at 1:50 dilution and FITC-labeled donkey anti-rabbit IgG (green). Blue pseudocolor = DAPI (fluorescent DNA dye).



IP Result of anti-SMARCD1 (IP:10998-2-AP, 3ug; Detection:10998-2-AP 1:600) with mouse brain tissue lysate 4000ug.