

Nur für Forschungszwecke

RPL3 Polyklonaler Antikörper

Katalog-Nr.: 11005-1-AP

Vorgestelltes Produkt

7 Publikationen



Allgemeine Informationen

Katalog-Nr.:
11005-1-AP

Größe:
150ul, Konzentration: 300 µg/ml von
Nanodrop und 187 µg/ml durch die
Bradford-Methode mit BSA als
Standard;

Wirt:
Kaninchen

Isotyp:
IgG

Immunogen Katalognummer:
AG1436

GenBank-Zugangsnummer:
BC012786

GeneID (NCBI):
6122

Vollständiger Name:
ribosomal protein L3

Berechnete Masse:
46/27 kDa

Beobachtete Masse:
46 kDa

Reinigungsmethode:

Antigen-Affinitätsreinigung

Empfohlene Verdünnungen:

WB 1:2000-1:16000

IP 0.5-4.0 µg für IP und 1:500-1:1000
für WB

IHC 1:50-1:500

IF 1:50-1:500

Anwendungen

Geprüfte Anwendungen:

IF, IHC, IP, WB, ELISA

In Publikationen genannte Anwendungen:

IF, IHC, WB

Getestete Reaktivität:

Human, Maus

Zitierte Arten:

Human, Maus

**Hinweis-IHC: Antigenmaskierung mit TE-
Puffer pH 9,0 empfohlen. (*) Wahlweise
kann die Antigenmaskierung auch mit
Citratpuffer pH 6,0 erfolgen.**

Positivkontrollen:

WB: Jurkat-Zellen, HeLa-Zellen, humanes
Nierengewebe, humanes Plazenta-Gewebe,
Mausnierengewebe, Raji-Zellen

IP: Mausnierengewebe,

IHC: humanes Prostatakarzinomgewebe,

IF: HepG2-Zellen,

Hintergrundinformationen

Ribosomes, the complexes that catalyze protein synthesis, consist of a small 40S subunit and a large 60S subunit. Together these subunits are composed of 4 RNA species and approximately 80 structurally distinct proteins. RPL3, also named as TARBP-B and MGC104284, belongs to the ribosomal protein L3P family. This protein is a component of the 60S subunit. It can bind to the HIV-1 TAR mRNA, and it has been suggested that the protein contributes to tat-mediated transactivation. As is typical for genes encoding ribosomal proteins, there are multiple processed pseudogenes of this gene dispersed through the genome. This is a rabbit polyclonal antibody raised against the C terminus of human RPL3.

Bemerkenswerte Veröffentlichungen

Verfasser	Pubmed ID	Journal	Anwendung
Elizabeth I Vink	34725147	Proc Natl Acad Sci U S A	WB
Kai Ma	35637200	Cell Discov	WB
Xue Zhang	32531052	Carcinogenesis	IHC

Lagerung

Lagerungsbedingungen:

Bei -20°C lagern. Nach dem Versand ein Jahr lang stabil

Lagerungspuffer:

PBS mit 0.02% Natriumazid und 50% Glycerin pH 7.3.

Aliquotieren ist nicht notwendig bei -20°C Lagerung

*** 20ul-Größen enthalten 0.1% BSA

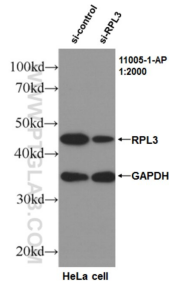
For technical support and original validation data for this product please contact:

T: 1 (888) 4PTGLAB (1-888-478-4522) (toll free
in USA), or 1(312) 455-8498 (outside USA)

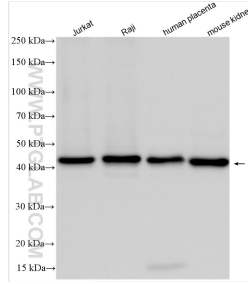
E: proteintech@ptglab.com
W: ptglab.com

This product is exclusively available under Proteintech Group brand and is not available to purchase from any other manufacturer.

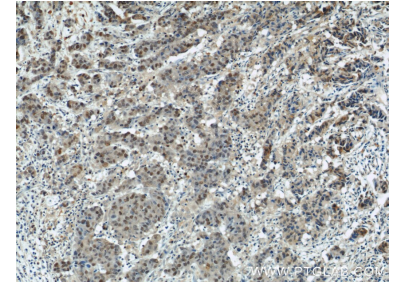
Ausgewählte Validierungsdaten



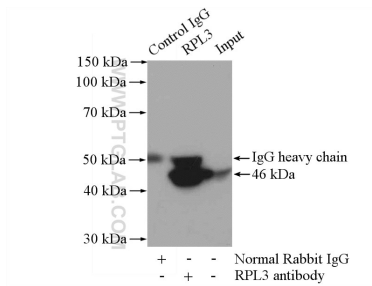
WB result of RPL3 antibody (11005-1-AP, 1:2000) with si-control and si-RPL3 transfected HeLa cells..



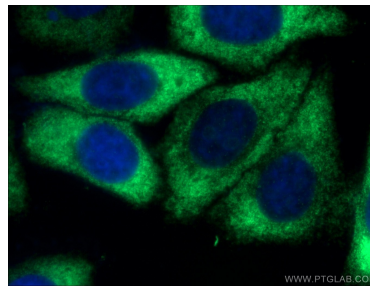
Various lysates were subjected to SDS PAGE followed by western blot with 11005-1-AP (RPL3 antibody) at dilution of 1:8000 incubated at room temperature for 1.5 hours.



Immunohistochemical analysis of paraffin-embedded human prostate cancer using 11005-1-AP (RPL3 antibody) at dilution of 1:50 (under 10x lens).



IP Result of anti-RPL3 (IP:11005-1-AP, 4ug; Detection:11005-1-AP 1:500) with mouse kidney tissue lysate 4000ug.



Immunofluorescent analysis of (-20°C Ethanol) fixed HepG2 cells using 11005-1-AP (RPL3 antibody) at dilution of 1:50 and Alexa Fluor 488-conjugated AffiniPure Goat Anti-Rabbit IgG(H+L).