

Nur für Forschungszwecke

Midkine Polyklonaler Antikörper

Katalog-Nr.: 11009-1-AP

Vorgestelltes Produkt

9 Publikationen



Allgemeine Informationen

Katalog-Nr.: 11009-1-AP	GenBank-Zugangsnummer: BC011704	Reinigungsmethode: Antigen-Affinitätsreinigung
Größe: 150ul, Konzentration: 350 µg/ml von Nanodrop;	GeneID (NCBI): 4192	Empfohlene Verdünnungen: WB 1:500-1:1000
Wirt: Kaninchen	Vollständiger Name: midkine (neurite growth-promoting factor 2)	
Isotyp: IgG	Berechnete Masse: 16 kDa	
Immunogen Katalognummer: AG1465	Beobachtete Masse: 16 kDa	

Anwendungen

Geprüfte Anwendungen: WB, ELISA	Positivkontrollen: WB: Mausembryogewebe, COLO 320-Zellen, SH-SY5Y-Zellen
In Publikationen genannte Anwendungen: IF, IHC, WB	
Getestete Reaktivität: Human, Maus	
Zitierte Arten: Human, Maus, Ratte	

Hintergrundinformationen

Midkine is a heparin-binding growth factor identified over 20 years ago and enhances the survival, migration and many other activities of target cells. Midkine is rich in both basic amino acids and cysteine, and is not related to most other growth factors/cytokines. It is strongly expressed during embryonic periods, especially at the midgestation stage, and plays important roles in development, especially in neurogenesis. Midkine expression in adult tissue is generally weak or undetectable, and it is induced upon injury and exerts many activities related to tissue repair. The biological activities of midkine in malignant tumors include proliferation, angiogenesis, invasion and metastasis. Various cancers express significantly higher levels of the midkine protein in early stage tumor tissues than in adjacent normal tissue.

Bemerkenswerte Veröffentlichungen

Verfasser	Pubmed ID	Journal	Anwendung
Beiquan Hu	34556138	Cancer Cell Int	WB
Federica Morani	33800494	Int J Mol Sci	WB
Luyu Zheng	35747815	Front Oncol	WB

Lagerung

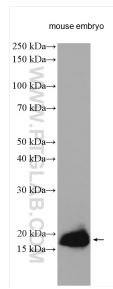
Lagerungsbedingungen:
Bei -20°C lagern. Nach dem Versand ein Jahr lang stabil
Lagerungspuffer:
PBS mit 0.02% Natriumazid und 50% Glycerin pH 7.3.
Aliquotieren ist nicht notwendig bei -20°C Lagerung

*** 20ul-Größen enthalten 0.1% BSA

For technical support and original validation data for this product please contact:
T: 1 (888) 4PTGLAB (1-888-478-4522) (toll free in USA), or 1(312) 455-8498 (outside USA)
E: proteintech@ptglab.com
W: ptglab.com

This product is exclusively available under Proteintech Group brand and is not available to purchase from any other manufacturer.

Ausgewählte Validierungsdaten



Mouse embryo tissue were subjected to SDS PAGE followed by western blot with 11009-1-AP (Midkine antibody) at dilution of 1:800 incubated at room temperature for 1.5 hours.