

Nur für Forschungszwecke

ACTR1B Polyklonaler Antikörper

Katalog-Nr.: 11023-1-AP



Allgemeine Informationen

Katalog-Nr.: 11023-1-AP	GenBank-Zugangsnummer: BC010090	Reinigungsmethode: Antigen-Affinitätsreinigung
Größe: 150ul, Konzentration: 167 µg/ml durch die Bradford-Methode mit BSA als Standard;	GeneID (NCBI): 10120	Empfohlene Verdünnungen: WB 1:500-1:2000 IHC 1:50-1:300 IF 1:20-1:200
Wirt: Kaninchen	Vollständiger Name: ARP1 actin-related protein 1 homolog B, cencentractin beta (yeast)	
Isotyp: IgG	Berechnete Masse: 42 kDa	
Immunogen Katalognummer: AG1467	Beobachtete Masse: 42-50 kDa	

Anwendungen

Geprüfte Anwendungen: IF, IHC, WB, ELISA	Positivkontrollen: WB : Maushingewebe, mouse heart IHC : humanes Mammakarzinomgewebe, IF : MCF-7-Zellen,
Getestete Reaktivität: Human, Maus, Ratte	
Hinweis-IHC: Antigendemaskierung mit TE-Puffer pH 9,0 empfohlen. (*) Wahlweise kann die Antigendemaskierung auch mit Citratpuffer pH 6,0 erfolgen.	

Hintergrundinformationen

ACTR1B (also known as beta cencentractin) is a part of the 20S dynactin complex. It colocalizes with centrosomes and vesicular (membranous) structures and is involved in cell division. ACTR1B and ACTR1A share 90% amino acid identity, and this antibody recognizes both ACTR1B and ACTR1A.

Lagerung

Lagerungsbedingungen:
Bei -20°C lagern. Nach dem Versand ein Jahr lang stabil
Lagerungspuffer:
PBS mit 0.02% Natriumazid und 50% Glycerin pH 7.3.
Aliquotieren ist nicht notwendig bei -20°C Lagerung

***** 20ul-Größen enthalten 0.1% BSA**

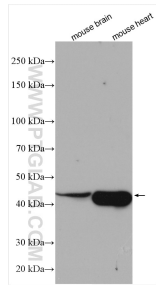
For technical support and original validation data for this product please contact:

T: 1 (888) 4PTGLAB (1-888-478-4522) (toll free in USA), or 1(312) 455-8498 (outside USA)

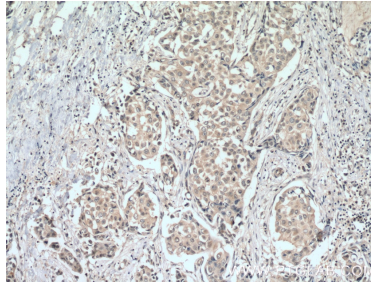
E: proteintech@ptglab.com
W: ptglab.com

This product is exclusively available under Proteintech Group brand and is not available to purchase from any other manufacturer.

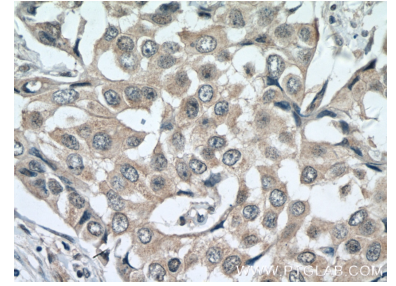
Ausgewählte Validierungsdaten



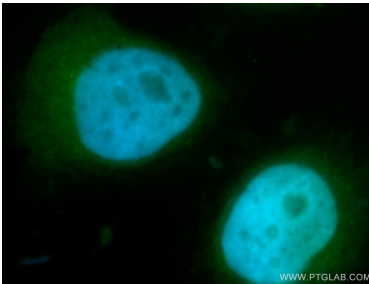
Various lysates were subjected to SDS PAGE followed by western blot with 11023-1-AP (ACTR1B antibody) at dilution of 1:1000 incubated at room temperature for 1.5 hours.



Immunohistochemical analysis of paraffin-embedded human breast cancer tissue slide using 11023-1-AP (ACTR1B antibody) at dilution of 1:200 (under 10x lens. Heat mediated antigen retrieval with Tris-EDTA buffer (pH 9.0).



Immunohistochemical analysis of paraffin-embedded human breast cancer tissue slide using 11023-1-AP (ACTR1B antibody) at dilution of 1:200 (under 40x lens. Heat mediated antigen retrieval with Tris-EDTA buffer (pH 9.0).



Immunofluorescent analysis of MCF-7 cells, using ACTR1B antibody 11023-1-AP at 1:50 dilution and FITC-labeled donkey anti-rabbit IgG (green). Blue pseudocolor = DAPI (fluorescent DNA dye).