

Allgemeine Informationen

Katalog-Nr.:
11027-1-AP

Größe:
150ul, Konzentration: 350 µg/ml von Nanodrop und 253 µg/ml durch die Bradford-Methode mit BSA als Standard;

Wirt:
Kaninchen

Isotyp:
IgG

Immunogen Katalognummer:
AG1480

GenBank-Zugangsnummer:
BC011674

GeneID (NCBI):
8985

Vollständiger Name:
procollagen-lysine, 2-oxoglutarate 5-dioxygenase 3

Berechnete Masse:
738 aa, 85 kDa

Beobachtete Masse:
80-85 kDa

Reinigungsmethode:

Antigen-Affinitätsreinigung

Empfohlene Verdünnungen:

WB 1:2000-1:16000

IP 0.5-4.0 µg für IP und 1:500-1:1000

für WB

IHC 1:100-1:400

IF 1:10-1:100

Anwendungen

Geprüfte Anwendungen:

IF, IHC, IP, WB, ELISA

In Publikationen genannte Anwendungen:

IF, IHC, IP, WB

Getestete Reaktivität:

Human, Maus, Ratte

Zitierte Arten:

Drosophila, Human, Maus, Ratte

Hinweis-IHC: Antigendemaskierung mit TE-Puffer pH 9,0 empfohlen. (*) Wahlweise kann die Antigendemaskierung auch mit Citratpuffer pH 6,0 erfolgen.

Positivkontrollen:

WB: A549-Zellen, HeLa-Zellen, HepG2-Zellen, humanes Plazenta-Gewebe, Maus-Plazenta-Gewebe, PC-3-Zellen

IP: HepG2-Zellen,

IHC: humanes Pankreaskarzinomgewebe, humanes Pankreasgewebe

IF: HepG2-Zellen,

Hintergrundinformationen

PLOD3, also named as LH3, forms hydroxylysine residues in -Xaa-Lys-Gly- sequences in collagens. These hydroxylysines serve as sites of attachment for carbohydrate units and are essential for the stability of the intermolecular collagen cross-links. The major function of PLOD3 in osteoblasts is to glucosylate galactosylhydroxylysine residues in type I collagen.

Bemerkenswerte Veröffentlichungen

Verfasser	Pubmed ID	Journal	Anwendung
Randy T Cowling	28923350	J Mol Cell Cardiol	WB
Stephen A Watt	26380979	PLoS One	IF
Siming Gong	34576068	Int J Mol Sci	IHC

Lagerung

Lagerungsbedingungen:

Bei -20°C lagern. Nach dem Versand ein Jahr lang stabil

Lagerungspuffer:

PBS mit 0.02% Natriumazid und 50% Glycerin pH 7.3.

Aliquotieren ist nicht notwendig bei -20°C Lagerung

*** 20ul-Größen enthalten 0.1% BSA

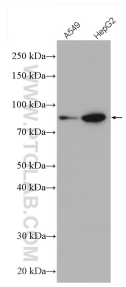
For technical support and original validation data for this product please contact:

T: 1 (888) 4PTGLAB (1-888-478-4522) (toll free in USA), or 1(312) 455-8498 (outside USA)

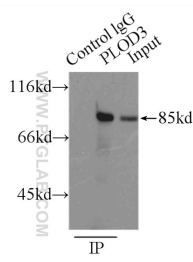
E: proteintech@ptglab.com
W: ptglab.com

This product is exclusively available under Proteintech Group brand and is not available to purchase from any other manufacturer.

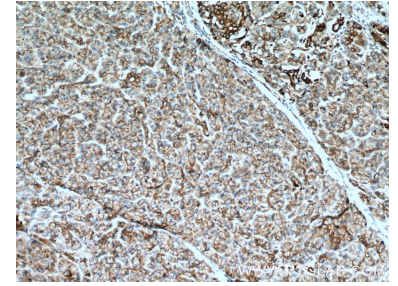
Ausgewählte Validierungsdaten



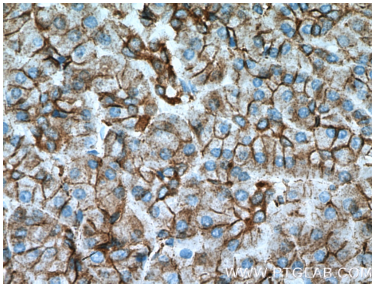
Various lysates were subjected to SDS PAGE followed by western blot with 11027-1-AP (PLOD3 antibody) at dilution of 1:2000 incubated at room temperature for 1.5 hours.



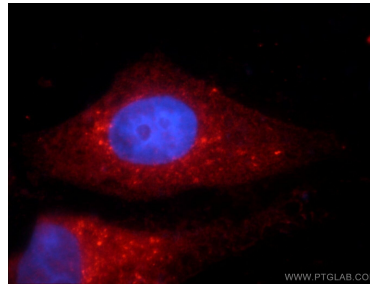
IP Result of anti-PLOD3 (IP:11027-1-AP, 3ug; Detection:11027-1-AP 1:500) with HepG2 cells lysate 6000ug.



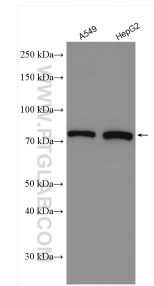
Immunohistochemical analysis of paraffin-embedded human pancreas cancer tissue slide using 11027-1-AP (PLOD3 Antibody) at dilution of 1:200 (under 10x lens). Heat mediated antigen retrieval with Tris-EDTA buffer (pH 9.0).



Immunohistochemical analysis of paraffin-embedded human pancreas cancer tissue slide using 11027-1-AP (PLOD3 Antibody) at dilution of 1:200 (under 40x lens). Heat mediated antigen retrieval with Tris-EDTA buffer (pH 9.0).



Immunofluorescent analysis of HepG2 cells using 11027-1-AP (PLOD3 antibody) at dilution of 1:25 and Rhodamine-Goat anti-Rabbit IgG.



Various lysates were subjected to SDS PAGE followed by western blot with 11027-1-AP (PLOD3 antibody) at dilution of 1:8000 incubated at room temperature for 1.5 hours.