

Allgemeine Informationen

Katalog-Nr.: 11074-2-AP	GenBank-Zugangsnummer: BC130486	Reinigungsmethode: Antigen-Affinitätsreinigung
Größe: 150ul , Konzentration: 500 µg/ml von Nanodrop und 287 µg/ml durch die Bradford-Methode mit BSA als Standard;	GeneID (NCBI): 140690	Empfohlene Verdünnungen: WB 1:500-1:2000 IHC 1:20-1:200 IF 1:20-1:200
Wirt: Kaninchen	Vollständiger Name: CCCTC-binding factor (zinc finger protein)-like	
Isotyp: IgG	Berechnete Masse: 82 kDa, 75 kDa	
Immunogen Katalognummer: AG1547	Beobachtete Masse: 75 kDa	

Anwendungen

Geprüfte Anwendungen: IF, IHC, WB,ELISA	Positivkontrollen:
Getestete Reaktivität: Human, Maus, Ratte	WB : PC-3-Zellen, HeLa-Zellen, Maushodengewebe, Rattenhodengewebe
Hinweis-IHC: Antigenmaskierung mit TE-Puffer pH 9,0 empfohlen. (*) Wahlweise kann die Antigenmaskierung auch mit Citratpuffer pH 6,0 erfolgen.	IHC : humanes Ovarialkarzinomgewebe,
	IF : SH-SY5Y-Zellen, HeLa-Zellen

Hintergrundinformationen

CTCF, also named BORIS (for brother of the regulator of imprinted sites) is a paralogue of the 11 zinc-finger transcription factor, CTCF. It is predominantly expressed in spermatocytes in the testis, also can be found in tumors and cancer cell lines. It mainly participates in insulator function, nuclear architecture and transcriptional control, which probably acts by recruiting epigenetic chromatin modifiers. It has a key role in gene imprinting in male germline, by participating in the establishment of differential methylation at the IGF2/H19 imprinted control region (ICR). Directly binds the unmethylated H19 ICR and recruits the PRMT7 methyltransferase, leading to methylate histone H4 'Arg-3' to form H4R3me2. Present polyclonal anti-CTCF antibody(11074-2-AP) is produced by immunizing animals with part of C-terminal chain of CTCFL and detect a 75-kDa band and a 55-kDa band.

Lagerung

Lagerungsbedingungen:
Bei -20°C lagern. Nach dem Versand ein Jahr lang stabil
Lagerungspuffer:
PBS mit 0.02% Natriumazid und 50% Glycerin pH 7.3.
Aliquotieren ist nicht notwendig bei -20°C Lagerung

*** 20ul-Größen enthalten 0.1% BSA

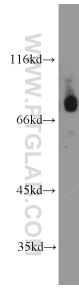
For technical support and original validation data for this product please contact:

T: 1 (888) 4PTGLAB (1-888-478-4522) (toll free in USA), or 1(312) 455-8498 (outside USA)

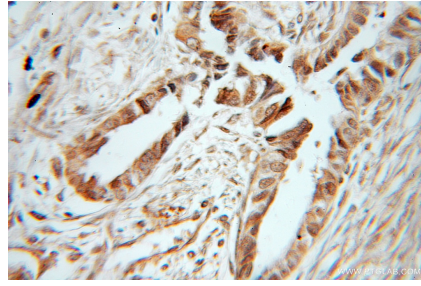
E: proteintech@ptglab.com
W: ptglab.com

This product is exclusively available under Proteintech Group brand and is not available to purchase from any other manufacturer.

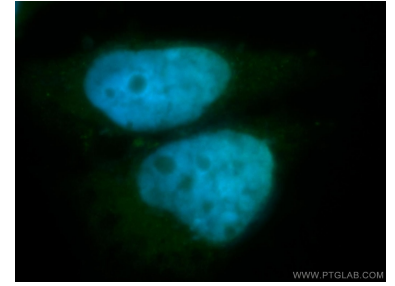
Ausgewählte Validierungsdaten



PC-3 cells were subjected to SDS PAGE followed by western blot with 11074-2-AP (BORIS antibody) at dilution of 1:1000 incubated at room temperature for 1.5 hours.



Immunohistochemical analysis of paraffin-embedded human ovary tumor using 11074-2-AP (BORIS antibody) at dilution of 1:50 (under 40x lens).



Immunofluorescent analysis of SH-SY5Y7 cells, using CTCFL antibody 11074-2-AP at 1:50 dilution and FITC-labeled donkey anti-rabbit IgG(green). Blue pseudocolor = DAPI (fluorescent DNA dye).