

## Allgemeine Informationen

**Katalog-Nr.:**

11082-1-AP

**Größe:**

150ul, Konzentration: 400 µg/ml von Nanodrop und 200 µg/ml durch die Bradford-Methode mit BSA als Standard;

**Wirt:**

Kaninchen

**Isotyp:**

IgG

**Immunogen Katalognummer:**

AG1550

**GenBank-Zugangsnummer:**

BC014073

**GeneID (NCBI):**

5501

**Vollständiger Name:**

protein phosphatase 1, catalytic subunit, gamma isoform

**Berechnete Masse:**

35 kDa

**Beobachtete Masse:**

35 kDa

**Reinigungsmethode:**

Antigen-Affinitätsreinigung

**Empfohlene Verdünnungen:**

WB 1:2000-1:16000  
IP 0.5-4.0 µg für IP und 1:500-1:1000 für WB  
IHC 1:50-1:500  
IF 1:50-1:500

## Anwendungen

**Geprüfte Anwendungen:**

IF, IHC, IP, WB, ELISA

**In Publikationen genannte Anwendungen:**

IP, WB

**Getestete Reaktivität:**

Human, Maus, Ratte

**Zitierte Arten:**

Human, Maus, Ratte

**Hinweis-IHC: Antigendemaskierung mit TE-Puffer pH 9,0 empfohlen. (\*) Wahlweise kann die Antigendemaskierung auch mit Citratpuffer pH 6,0 erfolgen.**

**Positivkontrollen:**

**WB:** HEK-293-Zellen, HEK-293T-Zellen, L02-Zellen, Maushirngewebe, MCF-7-Zellen, Rattenhirngewebe

**IP:** HEK-293-Zellen,

**IHC:** humanes Pankreaskarzinomgewebe,

**IF:** HEK-293-Zellen,

## Hintergrundinformationen

PPP1CC, also named as PP-1G, belongs to the PPP phosphatase family and PP-1 subfamily. Protein phosphatase 1 (PP1) is essential for cell division, and participates in the regulation of glycogen metabolism, muscle contractility and protein synthesis. It is involved in regulation of ionic conductances and long-term synaptic plasticity. PPP1CC may play an important role in dephosphorylating substrates such as the postsynaptic density-associated Ca<sup>2+</sup>/calmodulin dependent protein kinase II.

## Bemerkenswerte Veröffentlichungen

Verfasser	Pubmed ID	Journal	Anwendung
Ru-Jia Liao	25224648	Clin Exp Pharmacol Physiol	WB, IP
Xiaoman Zhu	36096985	Cell Death Dis	WB
Chao Huang	24196533	Am J Physiol Cell Physiol	WB

## Lagerung

**Lagerungsbedingungen:**

Bei -20°C lagern. Nach dem Versand ein Jahr lang stabil

**Lagerungspuffer:**

PBS mit 0.02% Natriumazid und 50% Glycerin pH 7.3.

Aliquotieren ist nicht notwendig bei -20°C Lagerung

**\*\*\* 20ul-Größen enthalten 0.1% BSA**

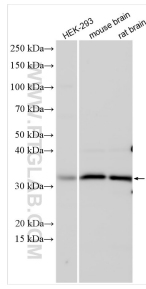
For technical support and original validation data for this product please contact:

T: 1 (888) 4PTGLAB (1-888-478-4522) (toll free in USA), or 1(312) 455-8498 (outside USA)

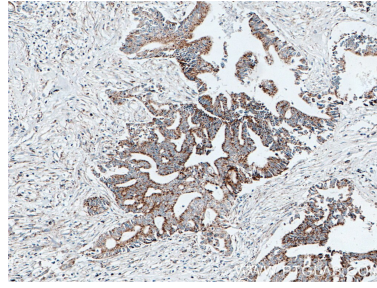
E: [proteintech@ptglab.com](mailto:proteintech@ptglab.com)  
W: [ptglab.com](http://ptglab.com)

**This product is exclusively available under Proteintech Group brand and is not available to purchase from any other manufacturer.**

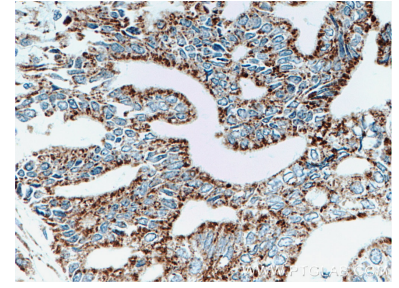
## Ausgewählte Validierungsdaten



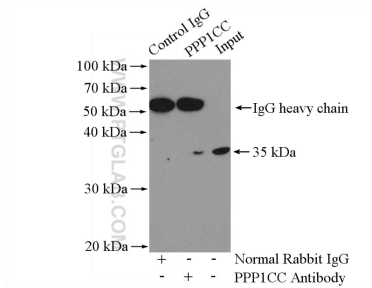
Various lysates were subjected to SDS PAGE followed by western blot with 11082-1-AP (PPP1CC antibody) at dilution of 1:8000 incubated at room temperature for 1.5 hours.



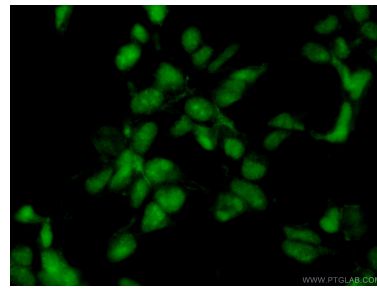
Immunohistochemical analysis of paraffin-embedded human pancreas cancer tissue slide using 11082-1-AP (PPP1CC antibody) at dilution of 1:200 (under 10x lens. Heat mediated antigen retrieval with Tris-EDTA buffer (pH 9.0).



Immunohistochemical analysis of paraffin-embedded human pancreas cancer tissue slide using 11082-1-AP (PPP1CC antibody) at dilution of 1:200 (under 40x lens. Heat mediated antigen retrieval with Tris-EDTA buffer (pH 9.0).



IP Result of anti-PPP1CC (IP:11082-1-AP, 4 $\mu$ g; Detection:11082-1-AP 1:500) with HEK-293 cells lysate 2000 $\mu$ g.



Immunofluorescent analysis of (10% Formaldehyde) fixed HEK-293 cells using 11082-1-AP (PPP1CC antibody) at dilution of 1:50 and Alexa Fluor 488-conjugated AffiniPure Goat Anti-Rabbit IgG(H+L).