

Allgemeine Informationen

| | | |
|---|--|---|
| Katalog-Nr.: 11091-1-AP | GenBank-Zugangsnummer: BC014051 | Reinigungsmethode: Antigen-Affinitätsreinigung |
| Größe: 150ul , Konzentration: 550 µg/ml von Nanodrop; | GeneID (NCBI): 9255 | Empfohlene Verdünnungen: WB 1:500-1:2000 IP 0.5-4.0 ug für IP und 1:500-1:1000 |
| Wirt: Kaninchen | Vollständiger Name: small inducible cytokine subfamily E, member 1 (endothelial monocyte-activating) | für WB IHC 1:50-1:500 IF 1:50-1:500 |
| Isotyp: IgG | Berechnete Masse: 34 kDa | |
| Immunogen Katalognummer: AG1560 | Beobachtete Masse: 34 kDa and 68 kDa | |

Anwendungen

Geprüfte Anwendungen:

IF, IHC, IP, WB, ELISA

In Publikationen genannte Anwendungen:

IF, IHC, WB

Getestete Reaktivität:

Human, Maus

Zitierte Arten:

Human, Ratte

Hinweis-IHC: Antigenmaskierung mit TE-Puffer pH 9,0 empfohlen. (*) Wahlweise kann die Antigenmaskierung auch mit Citratpuffer pH 6,0 erfolgen.

Positivkontrollen:

WB : HeLa-Zellen, A549-Zellen, Maushirngewebe, SGC-7901-Zellen, SH-SY5Y-Zellen, U-251-Zellen

IP : SGC-7901-Zellen,

IHC : humanes Zervixkarzinomgewebe,

IF : HeLa-Zellen,

Hintergrundinformationen

SCYE1 (small inducible cytokine subfamily E, member 1) is also named as EMAP2, AIMP1. The human cDNA encodes a 312-amino acid polypeptide that the predicted 34-kDa precursor can be cleaved to produce an active 20-kDa product (PMID:7929199). SCYE1 is secreted as a result of various stimuli, including TNF- α , heat shock, and hypoxia, and that it acts as a multifunctional cytokine on both endothelial and immune cells (PMID:18292511). Defects in AIMP1 are the cause of leukodystrophy hypomyelinating type 3 (HLD3). It has 2 isoforms produced by alternative splicing and the protein can exist as a dimer (PMID:11306575).

Bemerkenswerte Veröffentlichungen

| Verfasser | Pubmed ID | Journal | Anwendung |
|-----------------|-----------|--------------------------|-----------|
| Krishnendu Khan | 36037331 | Proc Natl Acad Sci U S A | WB |
| Xintian Chen | 33794309 | Cancer Lett | WB |
| Wei Gao | 31287215 | Proteomics | WB |

Lagerung

Lagerungsbedingungen:

Bei -20°C lagern. Nach dem Versand ein Jahr lang stabil

Lagerungspuffer:

PBS mit 0.02% Natriumazid und 50% Glycerin pH 7.3.

Aliquotieren ist nicht notwendig bei -20°C Lagerung

***** 20ul-Größen enthalten 0.1% BSA**

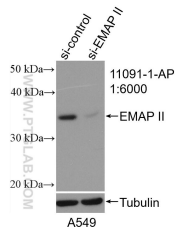
For technical support and original validation data for this product please contact:

T: 1 (888) 4PTGLAB (1-888-478-4522) (toll free in USA), or 1(312) 455-8498 (outside USA)

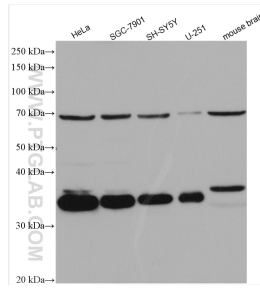
E: proteintech@ptglab.com
 W: ptglab.com

This product is exclusively available under Proteintech Group brand and is not available to purchase from any other manufacturer.

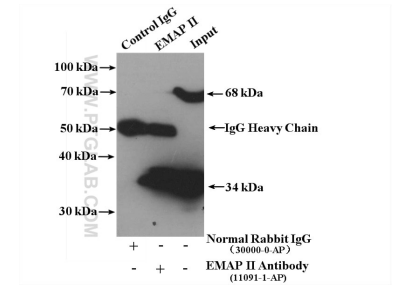
Ausgewählte Validierungsdaten



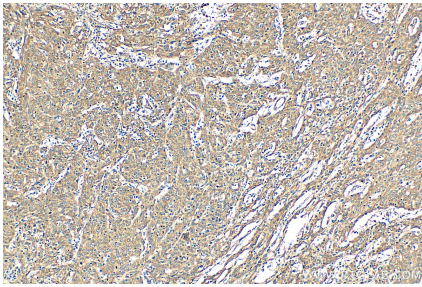
WB result of EMAP II antibody (11091-1-AP; 1:6000; incubated at room temperature for 1.5 hours) with sh-Control and sh-EMAP II transfected A549 cells.



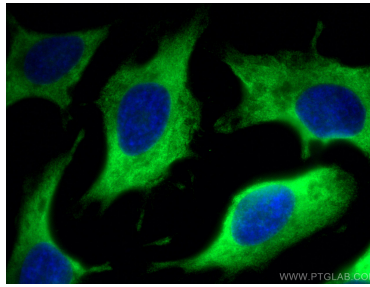
Various lysates were subjected to SDS PAGE followed by western blot with 11091-1-AP (EMAP II antibody) at dilution of 1:1000 incubated at room temperature for 1.5 hours.



IP result of anti-EMAP II (IP:11091-1-AP, 4ug; Detection:11091-1-AP 1:500) with SGC-7901 cells lysate 2200 ug.



Immunohistochemical analysis of paraffin-embedded human cervical cancer tissue slide using 11091-1-AP (EMAP II antibody) at dilution of 1:200 (under 10x lens). Heat mediated antigen retrieval with Tris-EDTA buffer (pH 9.0).



Immunofluorescent analysis of (-20°C Methanol) fixed HeLa cells using EMAP II antibody (11091-1-AP) at dilution of 1:200 and CoraLite@488-Conjugated AffiniPure Goat Anti-Rabbit IgG(H+L).