

Allgemeine Informationen

Katalog-Nr.:

11114-1-AP

Größe:

150ul , Konzentration: 700 µg/ml von Nanodrop und 387 µg/ml durch die Bradford-Methode mit BSA als Standard;

Wirt:

Kaninchen

Isotyp:

IgG

Immunogen Katalognummer:

AG1619

GenBank-Zugangsnummer:

BC014081

GeneID (NCBI):

6890

Vollständiger Name:

transporter 1, ATP-binding cassette, sub-family B (MDR/TAP)

Berechnete Masse:

81 kDa

Beobachtete Masse:

70-81 kDa

Reinigungsmethode:

Antigen-Affinitätsreinigung

Empfohlene Verdünnungen:

WB 1:1000-1:6000

IP 0.5-4.0 µg für IP und 1:500-1:1000 für WB

IHC 1:20-1:200

IF 1:20-1:200

Anwendungen

Geprüfte Anwendungen:

IF, IHC, IP, WB, ELISA

In Publikationen genannte Anwendungen:

IF, IHC, RIP, WB

Getestete Reaktivität:

Human, Maus

Zitierte Arten:

Human, Maus, Ratte

Hinweis-IHC: Antigendemaskierung mit TE-Puffer pH 9,0 empfohlen. (*) Wahlweise kann die Antigendemaskierung auch mit Citratpuffer pH 6,0 erfolgen.

Positivkontrollen:

WB : HCT 116-Zellen, HeLa-Zellen, HepG2-Zellen, Mausmilzgewebe, Maus-Skelettmuskelgewebe, SW480-Zellen

IP : HepG2-Zellen,

IHC : humanes Pankreaskarzinomgewebe,

IF : HepG2-Zellen,

Hintergrundinformationen

TAP1, also known as ABCB2, PSF1 or RING4, is a member of the ATP-binding cassette (ABC) family of transmembrane transporters and is an essential component of the major histocompatibility complex (MHC) class I antigen-presenting pathway. TAP is involved in the transport of antigens from the cytoplasm to the endoplasmic reticulum for association with MHC class I molecules. It also acts as a molecular scaffold for the final stage of MHC class I folding. Defects in TAP1 are a cause of bare lymphocyte syndrome type 1 (BLS1). Western blot analysis using this antibody detected a major band around 70-80 kDa in HeLa cells.

Bemerkenswerte Veröffentlichungen

Verfasser	Pubmed ID	Journal	Anwendung
Nima Attaran	36276482	Oncol Lett	IHC
Yan Li	36452477	Clin Transl Immunology	WB
Zhen-Da Wang	36419887	Front Oncol	WB,IHC

Lagerung

Lagerungsbedingungen:

Bei -20°C lagern. Nach dem Versand ein Jahr lang stabil

Lagerungspuffer:

PBS mit 0.02% Natriumazid und 50% Glycerin pH 7.3.

Aliquotieren ist nicht notwendig bei -20°C Lagerung

***** 20ul-Größen enthalten 0.1% BSA**

For technical support and original validation data for this product please contact:

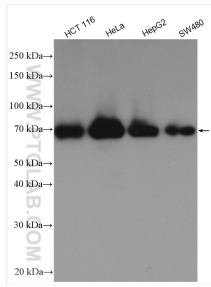
T: 1 (888) 4PTGLAB (1-888-478-4522) (toll free in USA), or 1(312) 455-8498 (outside USA)

E: proteintech@ptglab.com

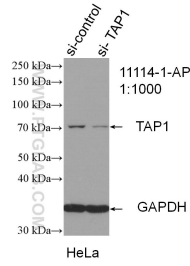
W: ptglab.com

This product is exclusively available under Proteintech Group brand and is not available to purchase from any other manufacturer.

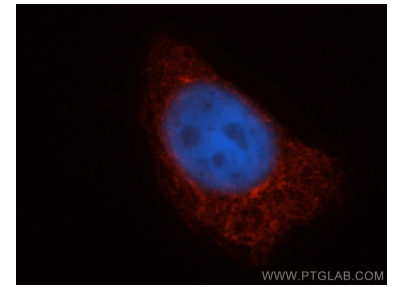
Ausgewählte Validierungsdaten



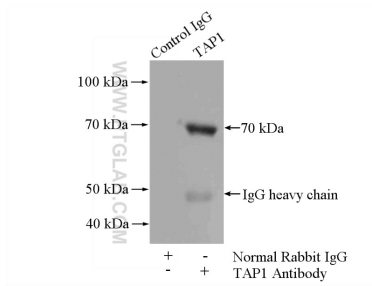
Various lysates were subjected to SDS PAGE followed by western blot with 11114-1-AP (TAP1 antibody) at dilution of 1:3000 incubated at room temperature for 1.5 hours.



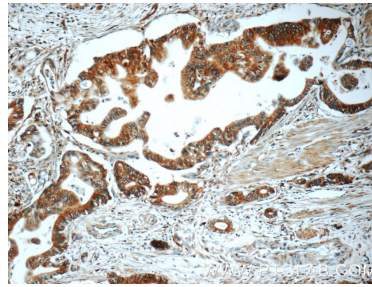
WB result of TAP1 antibody (11114-1-AP; 1:1000; incubated at room temperature for 1.5 hours) with sh-Control and sh-TAP1 transfected HeLa cells.



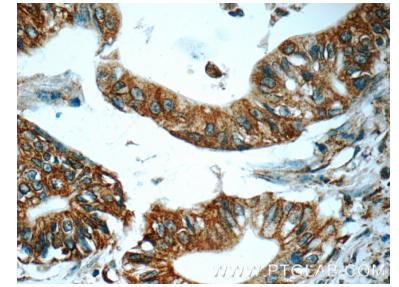
Immunofluorescent analysis of HepG2 cells, using TAP1 antibody 11114-1-AP at 1:50 dilution and Rhodamine-labeled goat anti-rabbit IgG (red). Blue pseudocolor = DAPI (fluorescent DNA dye).



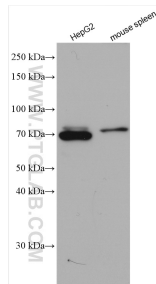
IP Result of anti-TAP1 (IP:11114-1-AP, 4 μ g; Detection:11114-1-AP 1:500) with HepG2 cells lysate 2400 μ g.



Immunohistochemical analysis of paraffin-embedded human pancreas cancer tissue slide using 11114-1-AP (TAP1 Antibody) at dilution of 1:50 (under 10x lens).



Immunohistochemical analysis of paraffin-embedded human pancreas cancer tissue slide using 11114-1-AP (TAP1 Antibody) at dilution of 1:50 (under 40x lens).



Various lysates were subjected to SDS PAGE followed by western blot with 11114-1-AP (TAP1 antibody) at dilution of 1:1500 incubated at room temperature for 1.5 hours.