

Nur für Forschungszwecke

# CD27 Polyklonaler Antikörper

Katalog-Nr.:11121-1-AP



## Allgemeine Informationen

Katalog-Nr.:  
11121-1-AP

Größe:  
150ul, Konzentration: 247 µg/ml  
durch die Bradford-Methode mit BSA  
als Standard;

Wirt:  
Kaninchen

Isotyp:  
IgG

Immunogen Katalognummer:  
AG1582

GenBank-Zugangsnummer:  
BC012160

GeneID (NCBI):  
939

Vollständiger Name:  
CD27 molecule

Berechnete Masse:  
29 kDa

Beobachtete Masse:  
45-50 kDa

Reinigungsmethode:

Antigen-Affinitätsreinigung

Empfohlene Verdünnungen:

WB 1:500-1:1000

## Anwendungen

Geprüfte Anwendungen:

FC, WB, ELISA

Getestete Reaktivität:

Human

Positivkontrollen:

WB : Raji-Zellen,

## Hintergrundinformationen

CD27 (also known as TNFRSF7) is a type I glycoprotein expressed on some B cells and the majority of T cells, and is a member of the tumor necrosis factor (TNF) receptor family. CD27 is required for generation and long-term maintenance of T cell immunity (PMID: 11062504). It is a receptor for CD70 (CD27L). Ligation of CD27 by CD70 induces strong ubiquitination of TRAF and the activation of both canonical and non-canonical NF-kappaB pathways, as well as the JNK pathway (PMID: 19426224). CD27 may also play a role in apoptosis through association with SIVA1.

## Lagerung

Lagerungsbedingungen:

Bei -20°C lagern. Nach dem Versand ein Jahr lang stabil

Lagerungspuffer:

PBS mit 0.02% Natriumazid und 50% Glycerin pH 7.3.

Aliquotieren ist nicht notwendig bei -20°C Lagerung

\*\*\* 20ul-Größen enthalten 0.1% BSA

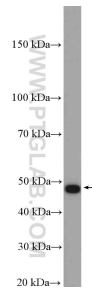
For technical support and original validation data for this product please contact:

T: 1 (888) 4PTGLAB (1-888-478-4522) (toll free  
in USA), or 1(312) 455-8498 (outside USA)

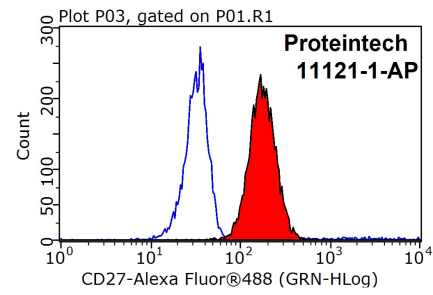
E: [proteintech@ptglab.com](mailto:proteintech@ptglab.com)  
W: [ptglab.com](http://ptglab.com)

This product is exclusively available under Proteintech Group brand and is not available to purchase from any other manufacturer.

## Ausgewählte Validierungsdaten



Raji cells were subjected to SDS PAGE followed by western blot with 11121-1-AP (CD27 antibody) at dilution of 1:600 incubated at room temperature for 1.5 hours.



$1 \times 10^6$  Raji cells were stained with 0.2  $\mu$ g CD27 antibody (11121-1-AP, red) and control antibody (blue). Fixed with 90% MeOH blocked with 3% BSA (30 min). Alexa Fluor 488-conjugated AffiniPure Goat Anti-Rabbit IgG(H+L) with dilution 1:1000.