

Nur für Forschungszwecke

EIF4E Polyklonaler Antikörper

Katalog-Nr.: 11149-1-AP

Vorgestelltes Produkt

17 Publikationen



Allgemeine Informationen

Katalog-Nr.: 11149-1-AP	GenBank-Zugangsnummer: BC012611	Reinigungsmethode: Antigen-Affinitätsreinigung
Größe: 150ul, Konzentration: 500 µg/ml von Nanodrop und 173 µg/ml durch die Bradford-Methode mit BSA als Standard;	GeneID (NCBI): 1977	Empfohlene Verdünnungen: WB 1:1000-1:4000 IHC 1:20-1:200 IF 1:10-1:100
Wirt: Kaninchen	Vollständiger Name: eukaryotic translation initiation factor 4E	
Isotyp: IgG	Berechnete Masse: 29 kDa	
Immunogen Katalognummer: AG1626	Beobachtete Masse: 26-29 kDa	

Anwendungen

Geprüfte Anwendungen: FC, IF, IHC, WB, ELISA	Positivkontrollen: WB : HeLa-Zellen, HEK-293T-Zellen, HEK-293-Zellen, HepG2-Zellen, Jurkat-Zellen, K-562-Zellen IHC : humanes Mammakarzinomgewebe, humanes Gliomgewebe IF : HepG2-Zellen,
In Publikationen genannte Anwendungen: IF, IHC, WB	
Getestete Reaktivität: Human	
Zitierte Arten: Human, Maus	
Hinweis-IHC: Antigenmaskierung mit TE-Puffer pH 9,0 empfohlen. (*) Wahlweise kann die Antigenmaskierung auch mit Citratpuffer pH 6,0 erfolgen.	

Hintergrundinformationen

Eukaryotic translation initiation factor 4E, also known as eIF4E, is a protein that in humans is encoded by the EIF4E gene. eIF4E is the mRNA cap-binding protein, known as a general initiation factor allowing for mRNA-ribosome interaction and cap-dependent translation in eukaryotic cells. eIF4E is a polypeptide that exists as both a free form and as part of the eIF4F pre-initiation complex. Regulation of eIF4E may be achieved via three distinct mechanisms: transcription, phosphorylation, and inhibitory proteins. This is a rabbit polyclonal antibody raised against the full-length human EIF4E.

Bemerkenswerte Veröffentlichungen

Verfasser	Pubmed ID	Journal	Anwendung
Yan Sun	34469122	ACS Chem Neurosci	WB
Guan-Nan Li	36097006	Signal Transduct Target Ther	WB
Jing Wang	36298816	Viruses	WB

Lagerung

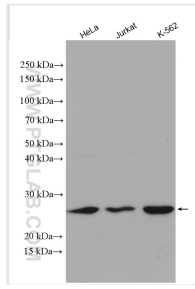
Lagerungsbedingungen:
Bei -20°C lagern. Nach dem Versand ein Jahr lang stabil
Lagerungspuffer:
PBS mit 0.02% Natriumazid und 50% Glycerin pH 7.3.
Aliquotieren ist nicht notwendig bei -20°C Lagerung

*** 20ul-Größen enthalten 0.1% BSA

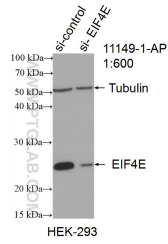
For technical support and original validation data for this product please contact:
T: 1 (888) 4PTGLAB (1-888-478-4522) (toll free in USA), or 1(312) 455-8498 (outside USA)
E: proteintech@ptglab.com
W: ptglab.com

This product is exclusively available under Proteintech Group brand and is not available to purchase from any other manufacturer.

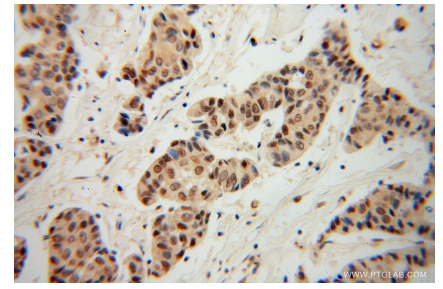
Ausgewählte Validierungsdaten



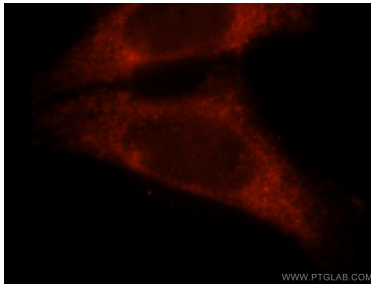
Various lysates were subjected to SDS PAGE followed by western blot with 11149-1-AP (EIF4E antibody) at dilution of 1:2000 incubated at room temperature for 1.5 hours.



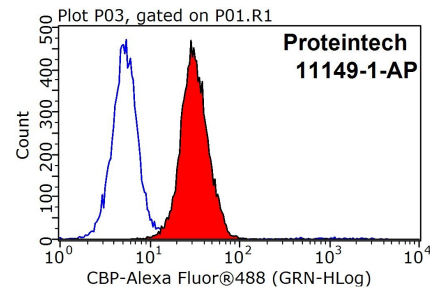
WB result of EIF4E antibody (11149-1-AP; 1:600; incubated at room temperature for 1.5 hours) with sh-Control and sh-EIF4E transfected HEK-293 cells.



Immunohistochemical analysis of paraffin-embedded human breast cancer using 11149-1-AP (EIF4E antibody) at dilution of 1:100 (under 40x lens).



Immunofluorescent analysis of HepG2 cells, using EIF4E antibody 11149-1-AP at 1:25 dilution and Rhodamine-labeled goat anti-rabbit IgG (red).



1X10⁶ HepG2 cells were stained with 0.2ug EIF4E antibody (11149-1-AP, red) and control antibody (blue). Fixed with 90% MeOH blocked with 3% BSA (30 min). Alexa Fluor 488-conjugated AffiniPure Goat Anti-Rabbit IgG(H+L) with dilution 1:1000.