

Nur für Forschungszwecke

Stathmin 1 Polyklonaler Antikörper

Katalog-Nr.:11157-1-AP

Vorgestelltes Produkt

20 Publikationen



Allgemeine Informationen

| | | |
|---|---|---|
| Katalog-Nr.: 11157-1-AP | GenBank-Zugangsnummer: BC014353 | Reinigungsmethode: Antigen-Affinitätsreinigung |
| Größe: 150ul , Konzentration: 750 µg/ml von Nanodrop; | GeneID (NCBI): 3925 | Empfohlene Verdünnungen: WB 1:1000-1:4000 IHC 1:50-1:500 |
| Wirt: Kaninchen | Vollständiger Name: stathmin 1/oncoprotein 18 | |
| Isotyp: IgG | Berechnete Masse: 18 kDa | |
| Immunogen Katalognummer: AG1633 | Beobachtete Masse: 18 kDa | |

Anwendungen

| | |
|--|---|
| Geprüfte Anwendungen: IHC, WB, ELISA | Positivkontrollen: WB : Jurkat-Zellen, PC-12-Zellen |
| In Publikationen genannte Anwendungen: IF, IHC, WB | IHC : humanes Gliomgewebe, humanes Lymphomgewebe |
| Getestete Reaktivität: Human | |
| Zitierte Arten: Human, Maus, Ratte | |

Hinweis-IHC: Antigenmaskierung mit TE-Puffer pH 9,0 empfohlen. (*) Wahlweise kann die Antigenmaskierung auch mit Citratpuffer pH 6,0 erfolgen.

Hintergrundinformationen

Stathmin 1 (STMN1) normally regulates microtubule dynamics either by sequestering free tubulin heterodimers or by promoting microtubule catastrophe. STMN1 is highly expressed in fetal and adult brain, spinal cord, and cerebellum. Many different phosphorylated forms are observed depending on specific combinations among the sites which can be phosphorylated. Phosphorylation of stathmin is involved in response to NGF, neuron polarization and microtubule polymerization inhibition activity. Increased expression of STMN1 has been observed in a variety of human malignancies, such as colorectal primary tumors and metastatic tissues, but its association with melanoma is so far not well known.

Bemerkenswerte Veröffentlichungen

| Verfasser | Pubmed ID | Journal | Anwendung |
|----------------|-----------|-------------------|-------------|
| Heidi R Fuller | 26370173 | Mol Cell Neurosci | WB, IHC, IF |
| Lei Zhao | 30202098 | Oncogene | WB |
| Xia-Ying Kuang | 26087399 | Oncotarget | IHC |

Lagerung

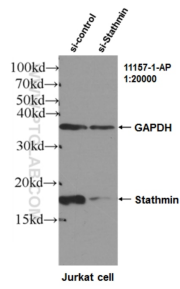
Lagerungsbedingungen:
Bei -20°C lagern. Nach dem Versand ein Jahr lang stabil
Lagerungspuffer:
PBS mit 0.02% Natriumazid und 50% Glycerin pH 7.3.
Aliquotieren ist nicht notwendig bei -20°C Lagerung

*** 20ul-Größen enthalten 0.1% BSA

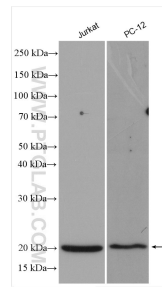
For technical support and original validation data for this product please contact:
T: 1 (888) 4PTGLAB (1-888-478-4522) (toll free in USA), or 1(312) 455-8498 (outside USA)
E: proteintech@ptglab.com
W: ptglab.com

This product is exclusively available under Proteintech Group brand and is not available to purchase from any other manufacturer.

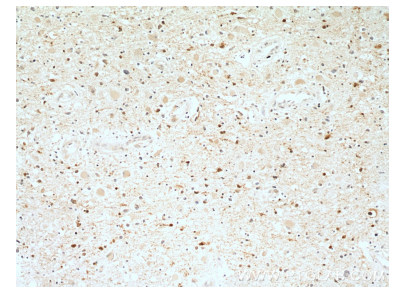
Ausgewählte Validierungsdaten



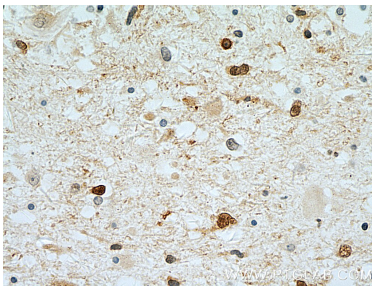
WB results of Stathmin antibody (11157-1-AP, 1:20000) with si-control and si-Stathmin transfected Jurkat cells..



Various lysates were subjected to SDS PAGE followed by western blot with 11157-1-AP (Stathmin 1 antibody) at dilution of 1:2000 incubated at room temperature for 1.5 hours.



Immunohistochemical analysis of paraffin-embedded human gliomas tissue slide using 11157-1-AP (Stathmin 1 antibody) at dilution of 1:50 (under 10x lens).



Immunohistochemical analysis of paraffin-embedded human gliomas using 11157-1-AP (Stathmin 1 antibody) at dilution of 1:50 (under 10x lens).