

Allgemeine Informationen

Katalog-Nr.: 11170-1-AP	GenBank-Zugangsnummer: BC002513	Reinigungsmethode: Antigen-Affinitätsreinigung
Größe: 150ul , Konzentration: 300 µg/ml von Nanodrop;	GeneID (NCBI): 1965	Empfohlene Verdünnungen: WB 1:5000-1:50000 IP 0.5-4.0 ug für IP und 1:2000-1:16000 für WB
Wirt: Kaninchen	Vollständiger Name: eukaryotic translation initiation factor 2, subunit 1 alpha, 35kDa	IHC 1:20-1:200 IF 1:20-1:200
Isotyp: IgG	Berechnete Masse: 36 kDa	
Immunogen Katalognummer: AG1645	Beobachtete Masse: 36 kDa	

Anwendungen

Geprüfte Anwendungen:
FC, IF, IHC, IP, WB, ELISA

In Publikationen genannte Anwendungen:
IHC, IP, WB

Getestete Reaktivität:
Human, Maus, Ratte

Zitierte Arten:
Hausschwein, Human, Maus, Ratte

Hinweis-IHC: Antigenmaskierung mit TE-Puffer pH 9,0 empfohlen. (*) Wahlweise kann die Antigenmaskierung auch mit Citratpuffer pH 6,0 erfolgen.

Positivkontrollen:

WB : HepG2-Zellen, Jurkat-Zellen, MCF-7-Zellen, NIH/3T3-Zellen

IP : HepG2-Zellen,

IHC : humanes Kolonkarzinomgewebe,

IF : HepG2-Zellen,

Hintergrundinformationen

EIF2S1 is one subunit of the translation initiation factor EIF2, which catalyzes the first regulated step of protein synthesis initiation, promoting the binding of the initiator tRNA to 40S ribosomal subunits. This complex binds to a 40S ribosomal subunit, followed by mRNA binding to form a 43S preinitiation complex. Junction of the 60S ribosomal subunit to form the 80S initiation complex is preceded by hydrolysis of the GTP bound to eIF-2 and release of an eIF-2-GDP binary complex. In order for eIF-2 to recycle and catalyze another round of initiation, the GDP bound to eIF-2 must exchange with GTP by way of a reaction catalyzed by eIF-2B. EIF2A (Gene ID: 83939) and EIF2S1 (Gene ID: 1965) share the EIF2A symbol/alias in common. EIF2S1 is the alpha subunit of the eIF2 translation initiation complex. Although both of these proteins function in binding initiator tRNA to the 40S ribosomal subunit, the EIF2A protein does so in a codon-dependent manner, whereas eIF2 complex requires GTP.

Bemerkenswerte Veröffentlichungen

Verfasser	Pubmed ID	Journal	Anwendung
Yu Sun	34562065	J Cell Mol Med	WB
Liguo Yang	32943607	Cell Death Dis	WB
Tongtong Liu	34530836	J Neuroinflammation	WB

Lagerung

Lagerungsbedingungen:

Bei -20°C lagern. Nach dem Versand ein Jahr lang stabil

Lagerungspuffer:

PBS mit 0.02% Natriumazid und 50% Glycerin pH 7.3.

Aliquotieren ist nicht notwendig bei -20°C Lagerung

*** 20ul-Größen enthalten 0.1% BSA

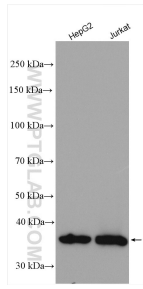
For technical support and original validation data for this product please contact:

T: 1 (888) 4PTGLAB (1-888-478-4522) (toll free in USA), or 1(312) 455-8498 (outside USA)

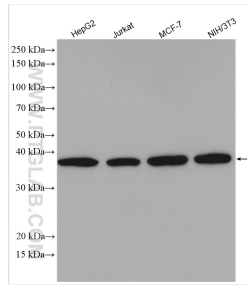
E: proteintech@ptglab.com
W: ptglab.com

This product is exclusively available under Proteintech Group brand and is not available to purchase from any other manufacturer.

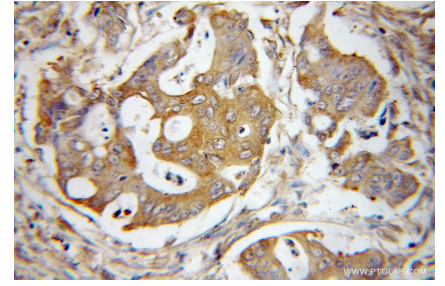
Ausgewählte Validierungsdaten



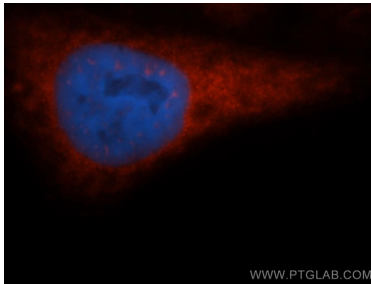
Various lysates were subjected to SDS PAGE followed by western blot with 11170-1-AP (EIF2S1/EIF2A antibody) at dilution of 1:10000 incubated at room temperature for 1.5 hours.



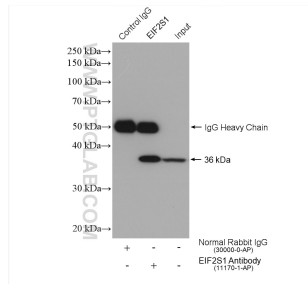
Various lysates were subjected to SDS PAGE followed by western blot with 11170-1-AP (EIF2S1/EIF2A antibody) at dilution of 1:10000 incubated at room temperature for 1.5 hours.



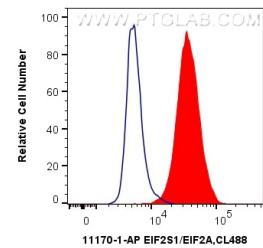
Immunohistochemical analysis of paraffin-embedded human colon cancer using 11170-1-AP (EIF2S1 antibody) at dilution of 1:50 (under 10x lens).



Immunofluorescent analysis of HepG2 cells, using EIF2S1 antibody 11170-1-AP at 1:50 dilution and Rhodamine-labeled goat anti-rabbit IgG (red). Blue pseudocolor = DAPI (fluorescent DNA dye).



IP result of anti-EIF2S1/EIF2A(IP:11170-1-AP, 4ug; Detection:11170-1-AP 1:8000) with HepG2 cells lysate 1640 ug.



1X10⁶ HeLa cells were intracellularly stained with 0.4 ug Anti-Human EIF2S1/EIF2A (11170-1-AP) and CoraLite®488-Conjugated AffiniPure Goat Anti-Rabbit IgG(H+L) at dilution 1:1000 (red), or 0.4 ug Control Antibody. Cells were fixed with 4% PFA and permeabilized with Flow Cytometry Perm Buffer (PF00011-C).