

Nur für Forschungszwecke

# EAF2 Polyklonaler Antikörper

Katalog-Nr.:11172-1-AP



## Allgemeine Informationen

<b>Katalog-Nr.:</b> 11172-1-AP	<b>GenBank-Zugangsnummer:</b> BC014209	<b>Reinigungsmethode:</b> Antigen-Affinitätsreinigung
<b>Größe:</b> 150ul , Konzentration: 750 µg/ml von Nanodrop und 400 µg/ml durch die Bradford-Methode mit BSA als Standard;	<b>GeneID (NCBI):</b> 55840	<b>Empfohlene Verdünnungen:</b> WB 1:500-1:2000 IHC 1:50-1:500 IF 1:20-1:200
<b>Wirt:</b> Kaninchen	<b>Vollständiger Name:</b> ELL associated factor 2	
<b>Isotyp:</b> IgG	<b>Berechnete Masse:</b> 42 kDa	
<b>Immunogen Katalognummer:</b> AG1637	<b>Beobachtete Masse:</b> 45 kDa	

## Anwendungen

<b>Geprüfte Anwendungen:</b> IF, IHC, WB, ELISA	<b>Positivkontrollen:</b> WB : HEK-293-Zellen, Mausnierengewebe IHC : humanes Mammakarzinomgewebe, IF : HepG2-Zellen,
<b>Getestete Reaktivität:</b> Human, Maus, Ratte	
<b>Hinweis-IHC: Antigenmaskierung mit TE-Puffer pH 9,0 empfohlen. (*) Wahlweise kann die Antigenmaskierung auch mit Citratpuffer pH 6,0 erfolgen.</b>	

## Hintergrundinformationen

ELL associated factor 1 and ELL associated factor 2 (EAF1/2 factors) are reported to play important roles in tumor suppression and embryogenesis. The tumor suppressor EAF2 is regulated by androgen signaling and associated with prostate cancer. Eaf factors have been revealed to modulate mesoderm and neural patterning by inhibiting canonical Wnt signaling, and high activity of canonical Wnt/ $\beta$ -catenin is revealed in eafs morphants (PMID: 23364330). Catalog# 11172-1-AP is a rabbit polyclonal antibody raised against the full-length of human EAF2.

## Lagerung

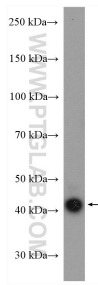
**Lagerungsbedingungen:**  
Bei -20°C lagern. Nach dem Versand ein Jahr lang stabil  
**Lagerungspuffer:**  
PBS mit 0.02% Natriumazid und 50% Glycerin pH 7.3.  
Aliquotieren ist nicht notwendig bei -20°C Lagerung

\*\*\* 20ul-Größen enthalten 0.1% BSA

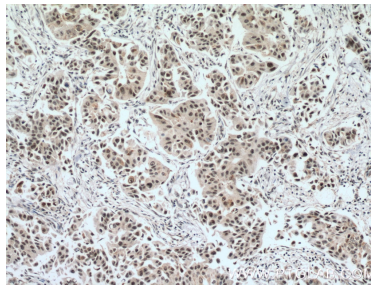
For technical support and original validation data for this product please contact:  
T: 1 (888) 4PTGLAB (1-888-478-4522) (toll free in USA), or 1(312) 455-8498 (outside USA)  
E: proteintech@ptglab.com  
W: ptglab.com

This product is exclusively available under Proteintech Group brand and is not available to purchase from any other manufacturer.

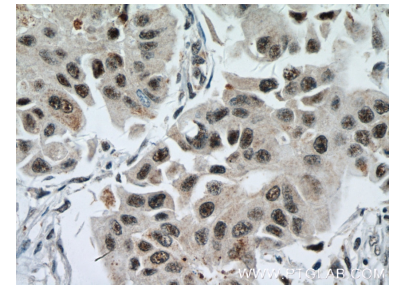
## Ausgewählte Validierungsdaten



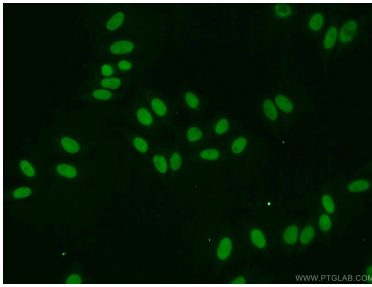
HEK-293 cells were subjected to SDS PAGE followed by western blot with 11172-1-AP (EAF2 antibody) at dilution of 1:1000 incubated at room temperature for 1.5 hours.



Immunohistochemical analysis of paraffin-embedded human breast cancer tissue slide using 11172-1-AP (EAF2 antibody) at dilution of 1:200 (under 10x lens. Heat mediated antigen retrieval with Tris-EDTA buffer (pH 9.0).



Immunohistochemical analysis of paraffin-embedded human breast cancer tissue slide using 11172-1-AP (EAF2 antibody) at dilution of 1:200 (under 40x lens. Heat mediated antigen retrieval with Tris-EDTA buffer (pH 9.0).



Immunofluorescent analysis of HepG2 cells using 11172-1-AP (EAF2 antibody) at dilution of 1:50 and Alexa Fluor 488-conjugated AffiniPure Goat Anti-Rabbit IgG(H+L).