

Nur für Forschungszwecke

ENO1 Polyklonaler Antikörper

Katalog-Nr.:11204-1-AP

Vorgestelltes Produkt

56 Publikationen



Allgemeine Informationen

Katalog-Nr.: 11204-1-AP	GenBank-Zugangsnummer: BC015641	Reinigungsmethode: Antigen-Affinitätsreinigung
Größe: 150ul , Konzentration: 700 µg/ml von Nanodrop;	GeneID (NCBI): 2023	Empfohlene Verdünnungen: WB 1:2000-1:12000 IP 0.5-4.0 ug für IP und 1:2000-1:16000 für WB
Wirt: Kaninchen	Vollständiger Name: enolase 1, (alpha)	IHC 1:500-1:2000 IF 1:50-1:500
Isotyp: IgG	Berechnete Masse: 47 kDa	
Immunogen Katalognummer: AG1692	Beobachtete Masse: 47 kDa	

Anwendungen

Geprüfte Anwendungen:
FC, IF, IHC, IP, WB, ELISA

In Publikationen genannte Anwendungen:
CoIP, IF, IHC, IP, WB

Getestete Reaktivität:
Human, Maus

Zitierte Arten:
Human, Maus, Ratte

Hinweis-IHC: Antigendemaskierung mit TE-Puffer pH 9,0 empfohlen. (*) Wahlweise kann die Antigendemaskierung auch mit Citratpuffer pH 6,0 erfolgen.

Positivkontrollen:

WB : HeLa-Zellen, humanes Skelettmuskelgewebe, L02-Zellen, Mauslebergewebe, Maus-Skelettmuskelgewebe, PC-3-Zellen, SGC-7901-Zellen

IP : Maus-Skelettmuskelgewebe,

IHC : humanes Magenkrebsgewebe, humanes Kolonkarzinomgewebe, humanes Leberkarzinomgewebe

IF : HepG2-Zellen,

Hintergrundinformationen

Enolase is an important glycolytic enzyme involved in the interconversion of 2-phosphoglycerate to phosphoenolpyruvate. Enolase were down-regulated in oxLDL-treated cells or in VLDL-treated cells. And it identified which are associated with glucose metabolism were down-regulated in the process of foam cells formation. (PMID: 19756395)

Bemerkenswerte Veröffentlichungen

Verfasser	Pubmed ID	Journal	Anwendung
Bing Sun	27684953	PLoS One	WB
Si Gao	28910549	Can J Physiol Pharmacol	WB
Xiaoduan Li	34510316	Cell Biol Toxicol	WB,IHC

Lagerung

Lagerungsbedingungen:

Bei -20°C lagern. Nach dem Versand ein Jahr lang stabil

Lagerungspuffer:

PBS mit 0.02% Natriumazid und 50% Glycerin pH 7.3.

Aliquotieren ist nicht notwendig bei -20°C Lagerung

*** 20ul-Größen enthalten 0.1% BSA

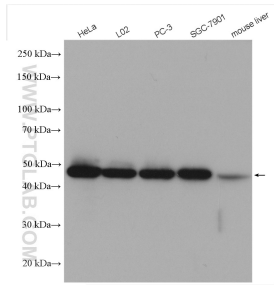
For technical support and original validation data for this product please contact:

T: 1 (888) 4PTGLAB (1-888-478-4522) (toll free in USA), or 1(312) 455-8498 (outside USA)

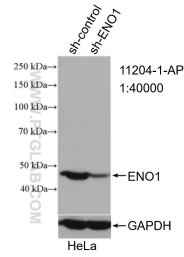
E: proteintech@ptglab.com
W: ptglab.com

This product is exclusively available under Proteintech Group brand and is not available to purchase from any other manufacturer.

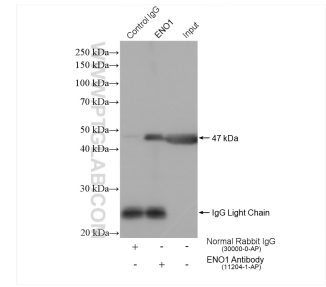
Ausgewählte Validierungsdaten



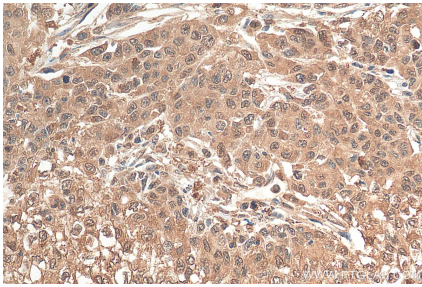
Various lysates were subjected to SDS PAGE followed by western blot with 11204-1-AP (ENO1 antibody) at dilution of 1:6000 incubated at room temperature for 1.5 hours.



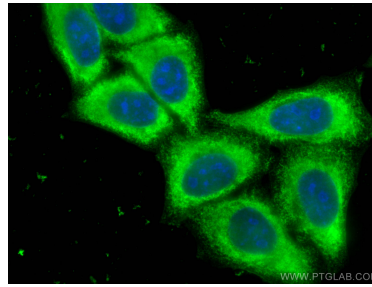
WB result of ENO1 antibody (11204-1-AP; 1:40000; incubated at room temperature for 1.5 hours) with sh-Control and sh-ENO1 transfected HeLa cells.



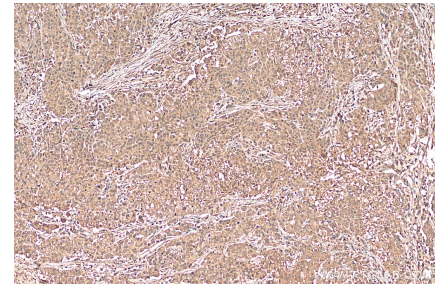
IP result of anti-ENO1 (IP:11204-1-AP, 4ug; Detection:11204-1-AP 1:8000) with mouse skeletal muscle tissue lysate 1280 ug.



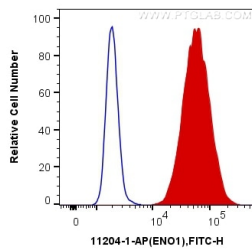
Immunohistochemical analysis of paraffin-embedded human stomach cancer tissue slide using 11204-1-AP (ENO1 antibody) at dilution of 1:1000 (under 40x lens). Heat mediated antigen retrieval with Tris-EDTA buffer (pH 9.0).



Immunofluorescent analysis of (-20°C Methanol) fixed HepG2 cells using ENO1 antibody (11204-1-AP) at dilution of 1:200 and CoralLite®488-Conjugated AffiniPure Goat Anti-Rabbit IgG(H+L).



Immunohistochemical analysis of paraffin-embedded human stomach cancer tissue slide using 11204-1-AP (ENO1 antibody) at dilution of 1:1000 (under 10x lens). Heat mediated antigen retrieval with Tris-EDTA buffer (pH 9.0).



1×10^6 A549 cells were intracellularly stained with 0.2 ug Anti-Human ENO1 (11204-1-AP) and CoralLite®488-Conjugated AffiniPure Goat Anti-Rabbit IgG(H+L) at dilution 1:1000 (red), or 0.2 ug Control Antibody. Cells were fixed with 4% PFA and permeabilized with Flow Cytometry Perm Buffer (PF00011-C).