

## Allgemeine Informationen

**Katalog-Nr.:**  
11211-1-AP

**Größe:**  
150ul , Konzentration: 900 µg/ml von  
Nanodrop und 473 µg/ml durch die  
Bradford-Methode mit BSA als  
Standard;

**Wirt:**  
Kaninchen

**Isotyp:**  
IgG

**Immunogen Katalognummer:**  
AG1708

**GenBank-Zugangsnummer:**  
BC018653

**GeneID (NCBI):**  
9419

**Vollständiger Name:**  
cysteine-rich PDZ-binding protein

**Berechnete Masse:**  
11 kDa

**Beobachtete Masse:**  
15 kDa

**Reinigungsmethode:**

Antigen-Affinitätsreinigung

**Empfohlene Verdünnungen:**

WB 1:500-1:1000

IP 0.5-4.0 ug für IP und 1:500-1:1000  
für WB

IF 1:20-1:200

## Anwendungen

**Geprüfte Anwendungen:**

IF, IP, WB, ELISA

**In Publikationen genannte Anwendungen:**

CoIP, IP, WB

**Getestete Reaktivität:**

Human, Maus, Ratte

**Zitierte Arten:**

Ratte

**Positivkontrollen:**

WB : L02-Zellen,

IP : L02-Zellen,

IF : L02-Zellen,

## Hintergrundinformationen

The clustering and immobilization of receptors and ion channels located at specific subcellular sites are believed to be mediated by intracellular proteins that attach these membrane proteins to the cytoskeleton. Receptors and ion channels interact with cytoplasmic proteins, which involved in the modulation or downstream signaling mechanisms of the receptor/ion channel. CRIPT is the protein that binds to the third PDZ (PDZ3) domain of PSD95, which binds to and clusters a variety of membrane proteins, including Shaker-type potassium channel subunits and NMDA receptor NR2 subunits, via its first 2 N-terminal PDZ domains

## Bemerkenswerte Veröffentlichungen

Verfasser	Pubmed ID	Journal	Anwendung
Anton Omelchenko	32157575	Mol Neurobiol	WB,CoIP
Lei Zhang	29218323	eNeuro	WB,IP

## Lagerung

**Lagerungsbedingungen:**

Bei -20°C lagern. Nach dem Versand ein Jahr lang stabil

**Lagerungspuffer:**

PBS mit 0.02% Natriumazid und 50% Glycerin pH 7.3.

Aliquotieren ist nicht notwendig bei -20°C Lagerung

**\*\*\* 20ul-Größen enthalten 0.1% BSA**

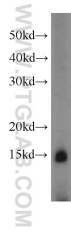
For technical support and original validation data for this product please contact:

T: 1 (888) 4PTGLAB (1-888-478-4522) (toll free  
in USA), or 1(312) 455-8498 (outside USA)

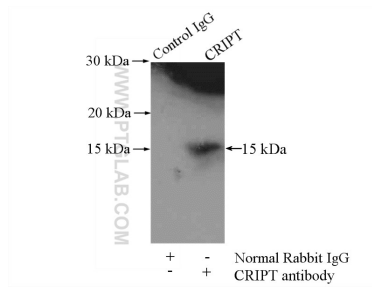
E: [proteintech@ptglab.com](mailto:proteintech@ptglab.com)  
W: [ptglab.com](http://ptglab.com)

**This product is exclusively available under Proteintech Group brand and is not available to purchase from any other manufacturer.**

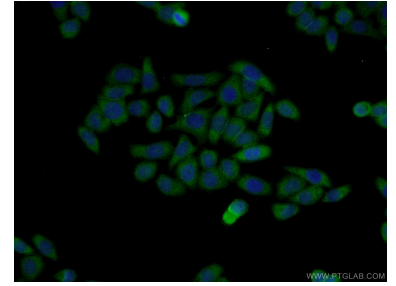
## Ausgewählte Validierungsdaten



L02 cells were subjected to SDS PAGE followed by western blot with 11211-1-AP (CRIPT antibody) at dilution of 1:500 incubated at room temperature for 1.5 hours.



IP Result of anti-CRIPT (IP:11211-1-AP, 4ug; Detection:11211-1-AP 1:500) with L02 cells lysate 1800ug.



Immunofluorescent analysis of L02 cells using 11211-1-AP (CRIPT antibody) at dilution of 1:50 and Alexa Fluor 488-conjugated AffiniPure Goat Anti-Rabbit IgG(H+L).