

## Allgemeine Informationen

<b>Katalog-Nr.:</b> 11217-1-AP	<b>GenBank-Zugangsnummer:</b> BC016800	<b>Reinigungsmethode:</b> Antigen-Affinitätsreinigung
<b>Größe:</b> 150ul , Konzentration: 300 µg/ml von Nanodrop;	<b>GeneID (NCBI):</b> 226	<b>Empfohlene Verdünnungen:</b> WB 1:5000-1:50000 IP 0.5-4.0 ug für IP und 1:500-1:2000 für WB
<b>Wirt:</b> Kaninchen	<b>Vollständiger Name:</b> aldolase A, fructose-bisphosphate	<b>IHC 1:100-1:400</b> <b>IF 1:50-1:500</b>
<b>Isotyp:</b> IgG	<b>Berechnete Masse:</b> 39 kDa	
<b>Immunogen Katalognummer:</b> AG1726	<b>Beobachtete Masse:</b> 35-40 kDa	

## Anwendungen

**Geprüfte Anwendungen:**  
FC, IF, IHC, IP, WB, ELISA

**In Publikationen genannte Anwendungen:**  
CoIP, IF, IHC, IP, RIP, WB

**Getestete Reaktivität:**  
Human, Maus, Ratte

**Zitierte Arten:**  
Hausschwein, Human, Maus, Ratte

**Hinweis-IHC: Antigendemaskierung mit TE-Puffer pH 9,0 empfohlen. (\*) Wahlweise kann die Antigendemaskierung auch mit Citratpuffer pH 6,0 erfolgen.**

**Positivkontrollen:**

**WB :** HEK-293-Zellen, A549-Zellen, HeLa-Zellen, HepG2-Zellen, Jurkat-Zellen, MCF-7-Zellen, NIH/3T3-Zellen, Rattenlebergewebe

**IP :** HepG2-Zellen,

**IHC :** humanes Kolonkarzinomgewebe, humanes Lungenkarzinomgewebe, humanes Skelettmuskelgewebe

**IF :** HeLa-Zellen,

## Hintergrundinformationen

ALDOA(Fructose-bisphosphate aldolase A) is also named as lung cancer antigen NY-LU-1,muscle-type aldolase,ALDA and belongs to the class I fructose-bisphosphate aldolase family.The ALDOA gene encodes a homotetrameric protein(PMID:14615364).It is found in skeletal muscle and red blood cells, and functions in glycolysis, promoting the reversible cleavage of FBP to triose phosphate, G-3-P and DHAP. ALDOA is upregulated in various cancers, including human lung squamous and renal cell carcinomas(PMID:19937139).

## Bemerkenswerte Veröffentlichungen

Verfasser	Pubmed ID	Journal	Anwendung
Bing Sun	27684953	PLoS One	WB
Salvador Polo-Genere	36136852	Noncoding RNA	RIP
Menghui Gu	36247245	Am J Transl Res	IHC,WB

## Lagerung

**Lagerungsbedingungen:**

Bei -20°C lagern. Nach dem Versand ein Jahr lang stabil

**Lagerungspuffer:**

PBS mit 0.02% Natriumazid und 50% Glycerin pH 7.3.

Aliquotieren ist nicht notwendig bei -20°C Lagerung

**\*\*\* 20ul-Größen enthalten 0.1% BSA**

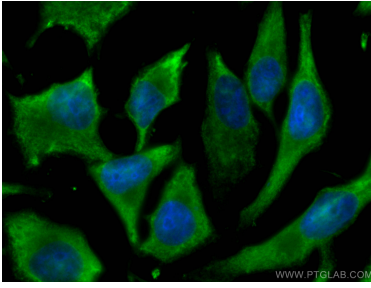
For technical support and original validation data for this product please contact:

T: 1 (888) 4PTGLAB (1-888-478-4522) (toll free in USA), or 1(312) 455-8498 (outside USA)

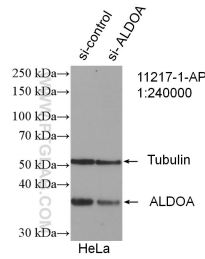
E: [proteintech@ptglab.com](mailto:proteintech@ptglab.com)  
W: [ptglab.com](http://ptglab.com)

**This product is exclusively available under Proteintech Group brand and is not available to purchase from any other manufacturer.**

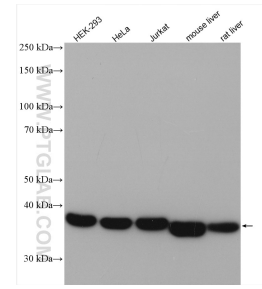
## Ausgewählte Validierungsdaten



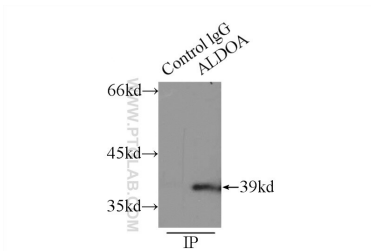
Immunofluorescent analysis of (-20°C Ethanol) fixed HeLa cells using ALDOA antibody (11217-1-AP) at dilution of 1:200 and CoraLite®488-Conjugated AffiniPure Goat Anti-Rabbit IgG(H+L).



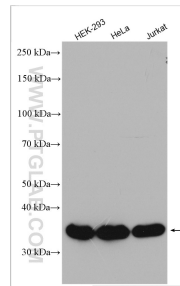
WB result of ALDOA antibody (11217-1-AP; 1:240000; incubated at room temperature for 1.5 hours) with sh-Control and sh-ALDOA transfected HeLa cells.



Various lysates were subjected to SDS PAGE followed by western blot with 11217-1-AP (ALDOA antibody) at dilution of 1:10000 incubated at room temperature for 1.5 hours.

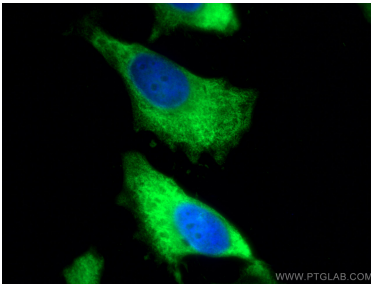


IP Result of anti-ALDOA (IP: 11217-1-AP, 3µg; Detection: 11217-1-AP 1:1000) with HepG2 cells lysate 6000µg.

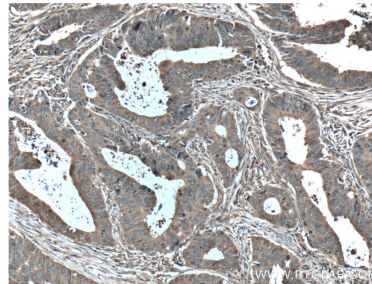


Various lysates were subjected to SDS PAGE followed by western blot with 11217-1-AP (ALDOA antibody) at dilution of 1:8000 incubated at room temperature for 1.5 hours.

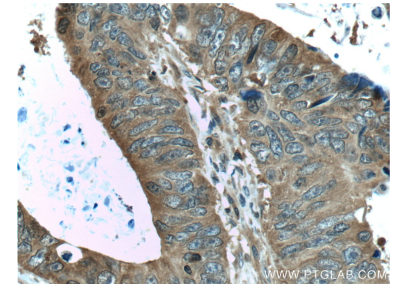
Various lysates were subjected to SDS PAGE followed by western blot with 11217-1-AP (ALDOA antibody) at dilution of 1:10000 incubated at room temperature for 1.5 hours.



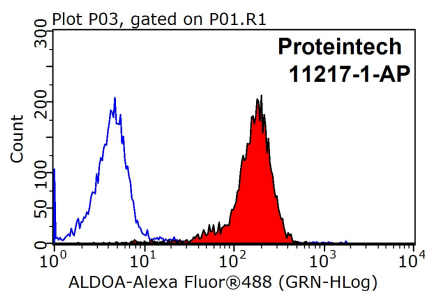
Immunofluorescent analysis of (-20°C Methanol) fixed HeLa cells using ALDOA antibody (11217-1-AP) at dilution of 1:200 and CoraLite®488-Conjugated AffiniPure Goat Anti-Rabbit IgG(H+L).



Immunohistochemical analysis of paraffin-embedded human colon cancer tissue slide using 11217-1-AP (ALDOA Antibody) at dilution of 1:200 (under 10x lens). Heat mediated antigen retrieval with Tris-EDTA buffer (pH 9.0).



Immunohistochemical analysis of paraffin-embedded human colon cancer tissue slide using 11217-1-AP (ALDOA Antibody) at dilution of 1:200 (under 40x lens). Heat mediated antigen retrieval with Tris-EDTA buffer (pH 9.0).



1X10<sup>6</sup> HeLa cells were stained with 0.2ug ALDOA antibody (11217-1-AP, red) and control antibody (blue). Fixed with 90% MeOH blocked with 3% BSA (30 min). Alexa Fluor 488-conjugated AffiniPure Goat Anti-Rabbit IgG(H+L) with dilution 1:1000.