

Nur für Forschungszwecke

Alpha Tubulin Polyklonaler Antikörper



Katalog-Nr.: 11224-1-AP

1034 Publikationen

Allgemeine Informationen

Katalog-Nr.: 11224-1-AP	GenBank-Zugangsnummer: BC009314	Reinigungsmethode: Antigen-Affinitätsreinigung
Größe: 150ul, Konzentration: 600 µg/ml von Nanodrop;	GeneID (NCBI): 10376	Empfohlene Verdünnungen: WB 1:2000-1:15000
Wirt: Kaninchen	Vollständiger Name: tubulin, alpha 1b	IP 0.5-4.0 µg für IP und 1:500-1:2000 für WB
Isotyp: IgG	Berechnete Masse: 50 kDa	IHC 1:50-1:500
Immunogen Katalognummer: AG1727	Beobachtete Masse: 50-55 kDa	IF 1:50-1:500

Anwendungen

Geprüfte Anwendungen:
FC, IF, IHC, IP, WB, ELISA

In Publikationen genannte Anwendungen:
CoIP, IF, IHC, IP, WB

Getestete Reaktivität:
Human, Maus, Ratte

Zitierte Arten:
Affe, Hamster, Hausschwein, Huhn, Human, Maus, Rind, Ziege, Bombyx Mori

Hinweis-IHC: Antigenmaskierung mit TE-Puffer pH 9,0 empfohlen. (*) Wahlweise kann die Antigenmaskierung auch mit Citratpuffer pH 6,0 erfolgen.

Positivkontrollen:

WB: A549-Zellen, HEK-293-Zellen, HeLa-Zellen, NIH/3T3-Zellen

IP: HeLa-Zellen,

IHC: humanes Kolonkarzinomgewebe, humanes Endometriumkarzinomgewebe, humanes Leberkarzinomgewebe

IF: HeLa-Zellen, HepG2-Zellen, Lymphendothelzellen, MCF-7-Zellen

Hintergrundinformationen

There are five tubulins in human cells: alpha, beta, gamma, delta, and epsilon. Tubulins are conserved across species. They form heterodimers, which multimerize to form a microtubule filament. An alpha and beta tubulin heterodimer is the basic structural unit of microtubules. The heterodimer does not come apart once formed. The alpha and beta tubulins, which are each about 55 kDa MW, are homologous but not identical. Alpha tubulin is useful for scientists across fields as an internal control due to its high, ubiquitous expression pattern. Tubulin expression may vary according to resistance to antimicrobial and antimetabolic drugs.

Bemerkenswerte Veröffentlichungen

Verfasser	Pubmed ID	Journal	Anwendung
Xiang Li	36246628	Front Genet	WB
Lin-Tao Xu	34601084	J Ethnopharmacol	WB
Yufei Yao	34660289	Front Oncol	WB

Lagerung

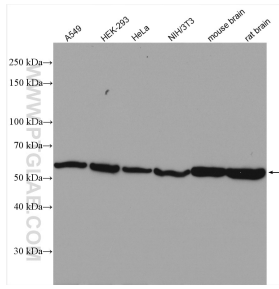
Lagerungsbedingungen:
Bei -20°C lagern. Nach dem Versand ein Jahr lang stabil
Lagerungspuffer:
PBS mit 0.02% Natriumazid und 50% Glycerin pH 7.3.
Aliquotieren ist nicht notwendig bei -20°C Lagerung

*** 20ul-Größen enthalten 0.1% BSA

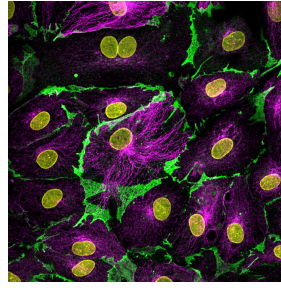
For technical support and original validation data for this product please contact:
T: 1 (888) 4PTGLAB (1-888-478-4522) (toll free in USA), or 1(312) 455-8498 (outside USA)
E: proteintech@ptglab.com
W: ptglab.com

This product is exclusively available under Proteintech Group brand and is not available to purchase from any other manufacturer.

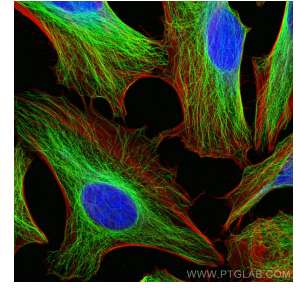
Ausgewählte Validierungsdaten



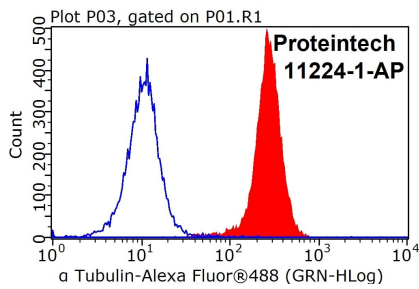
Various lysates were subjected to SDS PAGE followed by western blot with 11224-1-AP (alpha Tubulin antibody) at dilution of 1:10000 incubated at room temperature for 1.5 hours.



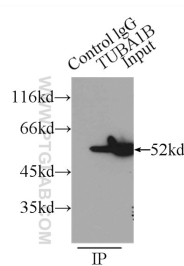
Lymphatic endothelial cells were stained for CD31 (green, Cat. No CL488-66065, 1:200) and alpha tubulin (magenta, Cat. 11224-1-AP, 1:200) with DAPI as a counterstain for visualizing the nucleus (yellow). CD31 is an endothelial cell adhesion protein and was conjugated to CoraLite-488 fluorescent dye to allow for direct visualization. Alpha tubulin is a cytoskeletal protein important in cell division and migration and was visualized with an Alexa Fluor 568 secondary antibody.



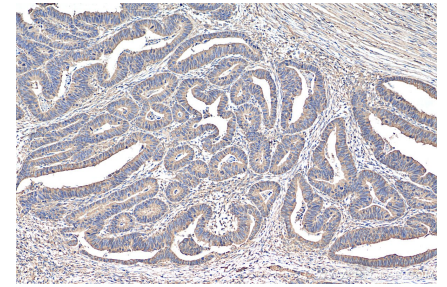
Immunofluorescent analysis of (4% PFA) fixed HeLa cells using Alpha Tubulin antibody (11224-1-AP) at dilution of 1:200 and CoraLite@488-Conjugated AffiniPure Goat Anti-Rabbit IgG(H+L), CL594-Phalloidin (red).



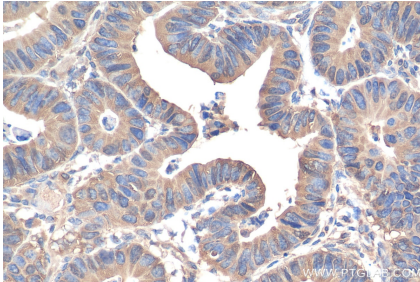
1X10⁶ HEK-293 cells were stained with 0.2ug alpha Tubulin antibody (11224-1-AP, red) and control antibody (blue). Fixed with 90% MeOH blocked with 3% BSA (30 min). FITC-Goat anti-Rabbit IgG with dilution 1:100.



IP Result of anti-alpha Tubulin (IP:11224-1-AP, 3ug; Detection:11224-1-AP 1:1000) with HeLa cells lysate 5000ug.



Immunohistochemical analysis of paraffin-embedded human colon cancer tissue slide using 11224-1-AP (Alpha Tubulin antibody) at dilution of 1:200 (under 10x lens). Heat mediated antigen retrieval with Tris-EDTA buffer (pH 9.0).



Immunohistochemical analysis of paraffin-embedded human colon cancer tissue slide using 11224-1-AP (Alpha Tubulin antibody) at dilution of 1:200 (under 40x lens). Heat mediated antigen retrieval with Tris-EDTA buffer (pH 9.0).