

Allgemeine Informationen

Katalog-Nr.:
11225-1-AP

Größe:
150ul, Konzentration: 400 µg/ml von
Nanodrop und 267 µg/ml durch die
Bradford-Methode mit BSA als
Standard;

Wirt:
Kaninchen

Isotyp:
IgG

Immunogen Katalognummer:
AG1730

GenBank-Zugangsnummer:
BC013375

GeneID (NCBI):
4176

Vollständiger Name:
minichromosome maintenance
complex component 7

Berechnete Masse:
81 kDa

Beobachtete Masse:
81 kDa

Reinigungsmethode:

Antigen-Affinitätsreinigung

Empfohlene Verdünnungen:

WB 1:5000-1:50000
IP 0.5-4.0 µg für IP und 1:1000-1:4000
für WB
IHC 1:50-1:500
IF 1:50-1:500

Anwendungen

Geprüfte Anwendungen:

FC, IF, IHC, IP, WB, ELISA

In Publikationen genannte Anwendungen:

CoIP, IHC, WB

Getestete Reaktivität:

Human, Maus, Ratte

Zitierte Arten:

Human, Maus

Hinweis-IHC: Antigenmaskierung mit TE-Puffer pH 9,0 empfohlen. (*) Wahlweise kann die Antigenmaskierung auch mit Citratpuffer pH 6,0 erfolgen.

Positivkontrollen:

WB : HeLa-Zellen, Jurkat-Zellen, K-562-Zellen, MCF-7-Zellen, NIH/3T3-Zellen

IP : NIH/3T3-Zellen,

IHC : humanes Lungenkarzinomgewebe, humanes Lymphomgewebe

IF : NIH/3T3-Zellen,

Hintergrundinformationen

MCM7, also named as CDC47 homolog or P1.1-MCM3, is a 719 amino acid protein, which belongs to the MCM family. MCM7 acts as component of the MCM2-7 complex (MCM complex) which is the putative replicative helicase essential for 'once per cell cycle' DNA replication initiation and elongation in eukaryotic cells. The MCM2-7 complex participates in the pre-replication complex formation and exhibits helicase activity which makes DNA unwind, and resulting in recruitment of DNA polymerases and initiation of DNA replication and elongation [PMID: 29463213]. An immunohistochemical study has shown that MCM7 is increased in HCC. Silencing of MCM7 with shRNA inhibits the malignant behavior of HCC cells via cell cycle arrest and apoptosis [[PMID: 29463213].

Bemerkenswerte Veröffentlichungen

Verfasser	Pubmed ID	Journal	Anwendung
Liangliang Cao	36133906	Front Mol Biosci	WB
Yi Zhu	30365225	Proteomics Clin Appl	IHC
Qing-Liang Wen	31949617	Int J Clin Exp Pathol	IHC

Lagerung

Lagerungsbedingungen:

Bei -20°C lagern. Nach dem Versand ein Jahr lang stabil

Lagerungspuffer:

PBS mit 0.02% Natriumazid und 50% Glycerin pH 7.3.

Aliquotieren ist nicht notwendig bei -20°C Lagerung

*** 20ul-Größen enthalten 0.1% BSA

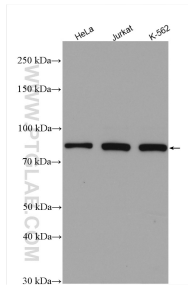
For technical support and original validation data for this product please contact:

T: 1 (888) 4PTGLAB (1-888-478-4522) (toll free in USA), or 1(312) 455-8498 (outside USA)

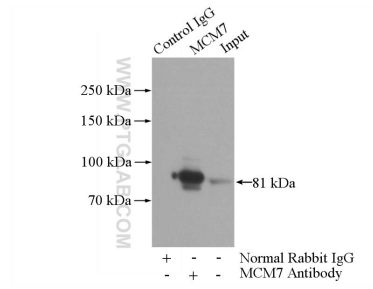
E: proteintech@ptglab.com
W: ptglab.com

This product is exclusively available under Proteintech Group brand and is not available to purchase from any other manufacturer.

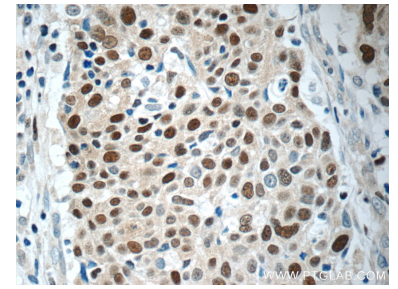
Ausgewählte Validierungsdaten



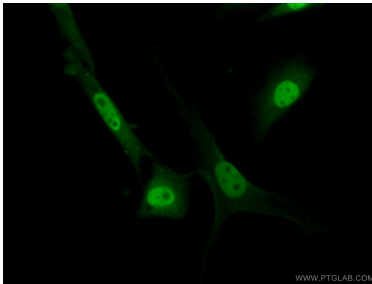
Various lysates were subjected to SDS PAGE followed by western blot with 11225-1-AP (MCM7 antibody) at dilution of 1:10000 incubated at room temperature for 1.5 hours.



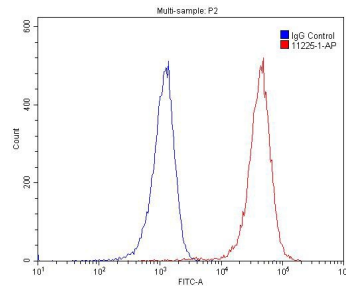
IP Result of anti-MCM7 (IP:11225-1-AP, 4ug; Detection:11225-1-AP 1:2000) with NIH/3T3 cells lysate 1600ug.



Immunohistochemical analysis of paraffin-embedded human lung cancer tissue slide using 11225-1-AP (MCM7 Antibody) at dilution of 1:200 (under 40x lens).



Immunofluorescent analysis of (10% Formaldehyde) fixed NIH/3T3 cells using 11225-1-AP (MCM7 antibody) at dilution of 1:50 and Alexa Fluor 488-conjugated AffiniPure Goat Anti-Rabbit IgG(H+L).



1×10^6 Raji cells were stained with 0.2ug MCM7 antibody (11225-1-AP, red) and control antibody (blue). Alexa Fluor 488-conjugated AffiniPure Goat Anti-Rabbit IgG(H+L) with dilution 1:1500. Cells were fixed with 4% PFA and permeabilized with 0.1% Triton X-100.