

Nur für Forschungszwecke

# SETDB1 Polyklonaler Antikörper

Katalog-Nr.: 11231-1-AP

Vorgestelltes Produkt

66 Publikationen



## Allgemeine Informationen

<b>Katalog-Nr.:</b> 11231-1-AP	<b>GenBank-Zugangsnummer:</b> BC009362	<b>Reinigungsmethode:</b> Antigen-Affinitätsreinigung
<b>Größe:</b> 150ul, Konzentration: 700 µg/ml von Nanodrop;	<b>GeneID (NCBI):</b> 9869	<b>Empfohlene Verdünnungen:</b> WB 1:500-1:2000 IP 0.5-4.0 µg für IP und 1:500-1:2000 für WB
<b>Wirt:</b> Kaninchen	<b>Vollständiger Name:</b> SET domain, bifurcated 1	<b>IHC 1:50-1:500</b> <b>IF 1:200-1:800</b>
<b>Isotyp:</b> IgG	<b>Berechnete Masse:</b> 143 kDa	
<b>Immunogen Katalognummer:</b> AG1725	<b>Beobachtete Masse:</b> 170 kDa	

## Anwendungen

### Geprüfte Anwendungen:

IF, IHC, IP, WB, ELISA

### In Publikationen genannte Anwendungen:

ChIP, CoIP, IF, IHC, IP, WB

### Getestete Reaktivität:

Human, Maus, Ratte

### Zitierte Arten:

Human, Maus

**Hinweis-IHC: Antigenmaskierung mit TE-Puffer pH 9,0 empfohlen. (\*) Wahlweise kann die Antigenmaskierung auch mit Citratpuffer pH 6,0 erfolgen.**

### Positivkontrollen:

**WB:** Jurkat-Zellen, HEK-293-Zellen, humanes Hodengewebe, Maushirngewebe, MCF-7-Zellen, PC-3-Zellen

**IP:** MCF-7-Zellen,

**IHC:** humanes Lungenkarzinomgewebe, humanes Hodengewebe

**IF:** A431-Zellen,

## Hintergrundinformationen

SETDB1, also named as ESET, KIAA0067 and KMT1E, belongs to the histone-lysine methyltransferase family. It is a SET domain protein with histone H3-K9-specific methyltransferase activity. H3 'Lys-9' trimethylation is coordinated with DNA methylation and represents a specific tag for epigenetic transcriptional repression by recruiting HP1 (CBX1, CBX3 and/or CBX5) proteins to methylated histones. SETDB1 mainly functions in euchromatin regions, thereby playing a central role in the silencing of euchromatic genes. It probably forms a complex with MBD1 and ATF7IP that represses transcription and couples DNA methylation and histone 'Lys-9' trimethylation. Its activity is dependent on MBD1 and is heritably maintained through DNA replication by being recruited by CAF-1. SETDB1 regulates histone methylation, gene silencing, and transcriptional repression. It has been identified as a target for treatment in Huntington Disease, given that gene silencing and transcription dysfunction likely play a role in the disease pathogenesis. This antibody is a rabbit polyclonal antibody raised against residues near the N terminus of human SETDB1. The calculated molecular weight of SETDB1 is 143 kDa, but the modified SETDB1 protein is about 170 kDa (PMID: 11791185).

## Bemerkenswerte Veröffentlichungen

Verfasser	Pubmed ID	Journal	Anwendung
Keli Chen	29158805	J Cancer	chIP
Qi Li	34497149	J Immunol	ChIP
Tiantian Liu	28890329	Biochim Biophys Acta	chIP

## Lagerung

### Lagerungsbedingungen:

Bei -20°C lagern. Nach dem Versand ein Jahr lang stabil

### Lagerungspuffer:

PBS mit 0.02% Natriumazid und 50% Glycerin pH 7.3.

Aliquotieren ist nicht notwendig bei -20°C Lagerung

\*\*\* 20ul-Größen enthalten 0.1% BSA

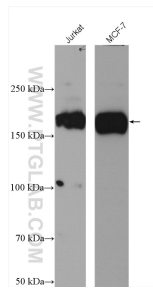
For technical support and original validation data for this product please contact:

T: 1 (888) 4PTGLAB (1-888-478-4522) (toll free in USA), or 1(312) 455-8498 (outside USA)

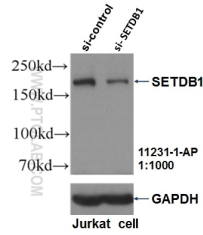
E: proteintech@ptglab.com  
W: ptglab.com

This product is exclusively available under Proteintech Group brand and is not available to purchase from any other manufacturer.

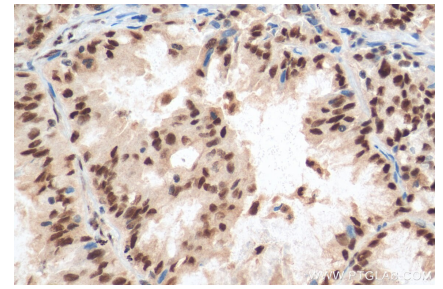
## Ausgewählte Validierungsdaten



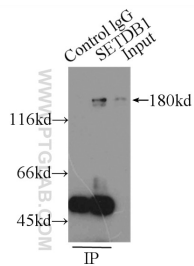
Various lysates were subjected to SDS PAGE followed by western blot with 11231-1-AP (SETDB1 antibody) at dilution of 1:1000 incubated at room temperature for 1.5 hours.



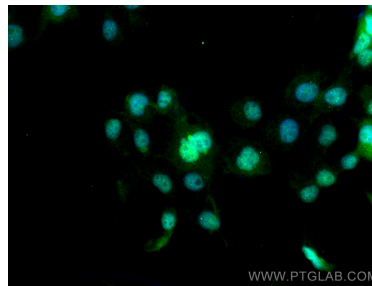
WB result of SETDB1 antibody (11231-1-AP, 1:1000) with si-Control and si-SETDB1 transfected Jurkat cells.



Immunohistochemical analysis of paraffin-embedded human lung cancer tissue slide using 11231-1-AP (SETDB1 antibody) at dilution of 1:200 (under 40x lens). Heat mediated antigen retrieval with Tris-EDTA buffer (pH 9.0).



IP Result of anti-SETDB1 (IP:11231-1-AP, 3ug; Detection:11231-1-AP 1:1000) with MCF-7 cells lysate 2500ug.



Immunofluorescent analysis of (4% PFA) fixed A431 cells using SETDB1 antibody (11231-1-AP) at dilution of 1:400 and CoraLite®488-Conjugated AffiniPure Goat Anti-Rabbit IgG(H+L).