

Allgemeine Informationen

Katalog-Nr.:
11233-1-AP

Größe:
150ul, Konzentration: 800 µg/ml von Nanodrop und 340 µg/ml durch die Bradford-Methode mit BSA als Standard;

Wirt:
Kaninchen

Isotyp:
IgG

Immunogen Katalognummer:
AG1753

GenBank-Zugangsnummer:
BC011885

GeneID (NCBI):
83939

Vollständiger Name:
eukaryotic translation initiation factor 2A, 65kDa

Berechnete Masse:
65 kDa

Beobachtete Masse:
65 kDa

Reinigungsmethode:

Antigen-Affinitätsreinigung

Empfohlene Verdünnungen:

WB 1:1000-1:8000

IP 0.5-4.0 µg für IP und 1:500-1:2000 für WB

IHC 1:20-1:200

IF 1:200-1:800

Anwendungen

Geprüfte Anwendungen:

FC, IF, IHC, IP, WB, ELISA

In Publikationen genannte Anwendungen:

IF, IHC, WB

Getestete Reaktivität:

Human, Maus, Ratte

Zitierte Arten:

Human, Maus, Ratte

Hinweis-IHC: Antigendemaskierung mit TE-Puffer pH 9,0 empfohlen. (*) Wahlweise kann die Antigendemaskierung auch mit Citratpuffer pH 6,0 erfolgen.

Positivkontrollen:

WB: MCF-7-Zellen, HEK-293T-Zellen, HeLa-Zellen, PC-12-Zellen

IP: MCF-7-Zellen,

IHC: humanes Prostatakarzinomgewebe, humanes Pankreasgewebe

IF: HepG2-Zellen, mit Ethacrynsäure behandelte HepG2-Zellen

Hintergrundinformationen

EIF2A, also named as CDA02, MSTP004 and MSTP089, belongs to the WD repeat EIF2A family. It functions in the early steps of protein synthesis of a small number of specific mRNAs. EIF2A, an alternative initiator tRNA-binding protein, has a key role in the translation of HCV mRNA during HCV infection, in turn promoting eIF2a phosphorylation by activating the eIF2a kinase PKR. This antibody is a rabbit polyclonal antibody raised against residues near the C terminus of human EIF2A, recognizes specifically the 65kd EIF2A protein. EIF2A (Gene ID: 83939) and EIF2S1 (Gene ID: 1965) share the EIF2A symbol/alias in common. EIF2S1 is the alpha subunit of the eIF2 translation initiation complex. Although both of these proteins function in binding initiator tRNA to the 40S ribosomal subunit, the EIF2A protein does so in a codon-dependent manner, whereas eIF2 complex requires GTP.

Bemerkenswerte Veröffentlichungen

Verfasser	Pubmed ID	Journal	Anwendung
Yun Chen	32996245	J Cell Mol Med	WB
Tao Wang	36151083	Nat Commun	IF
Yonghua Chen	30181379	Biosci Rep	WB

Lagerung

Lagerungsbedingungen:

Bei -20°C lagern. Nach dem Versand ein Jahr lang stabil

Lagerungspuffer:

PBS mit 0.02% Natriumazid und 50% Glycerin pH 7.3.

Aliquotieren ist nicht notwendig bei -20°C Lagerung

*** 20ul-Größen enthalten 0.1% BSA

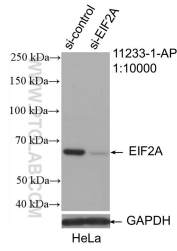
For technical support and original validation data for this product please contact:

T: 1 (888) 4PTGLAB (1-888-478-4522) (toll free in USA), or 1(312) 455-8498 (outside USA)

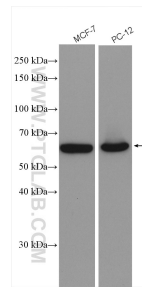
E: proteintech@ptglab.com
W: ptglab.com

This product is exclusively available under Proteintech Group brand and is not available to purchase from any other manufacturer.

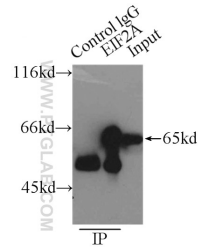
Ausgewählte Validierungsdaten



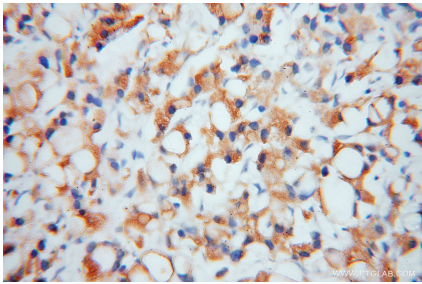
WB result of EIF2A/CDA02 antibody (11233-1-AP; 1:10000; incubated at room temperature for 1.5 hours) with sh-Control and sh-EIF2A/CDA02 transfected HeLa cells.



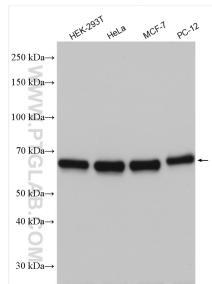
Various lysates were subjected to SDS PAGE followed by western blot with 11233-1-AP (EIF2A/CDA02 antibody) at dilution of 1:4000 incubated at room temperature for 1.5 hours.



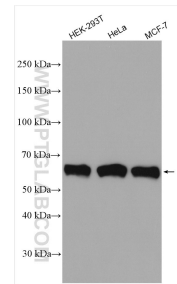
IP Result of anti-EIF2A (IP:11233-1-AP, 3ug; Detection:11233-1-AP 1:1000) with MCF-7 cells lysate 3250ug.



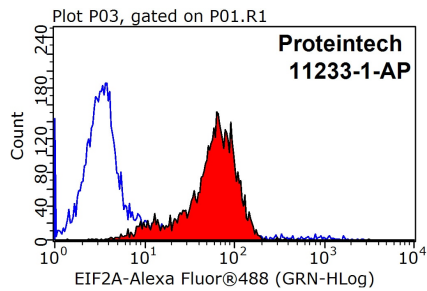
Immunohistochemical analysis of paraffin-embedded human prostate cancer using 11233-1-AP (EIF2A antibody) at dilution of 1:50 (under 40x lens).



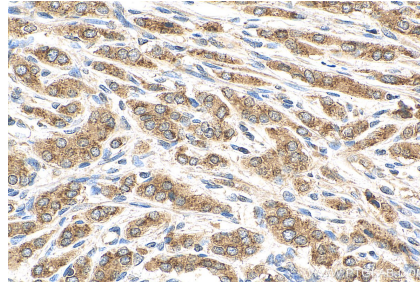
Various lysates were subjected to SDS PAGE followed by western blot with 11233-1-AP (EIF2A/CDA02 antibody) at dilution of 1:10000 incubated at room temperature for 1.5 hours.



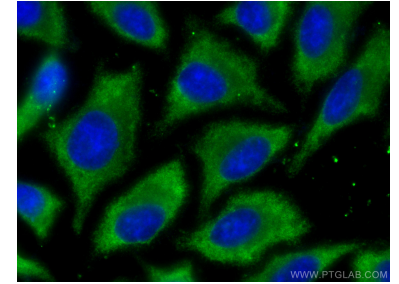
Various lysates were subjected to SDS PAGE followed by western blot with 11233-1-AP (EIF2A/CDA02 antibody) at dilution of 1:8000 incubated at room temperature for 1.5 hours.



1X10⁶ HepG2 cells were stained with .2ug EIF2A antibody (11233-1-AP, red) and control antibody (blue). Fixed with 90% MeOH blocked with 3% BSA (30 min). Alexa Fluor 488-conjugated AffiniPure Goat Anti-Rabbit IgG(H+L) with dilution 1:1000.



Immunohistochemical analysis of paraffin-embedded human prostate cancer tissue slide using 11233-1-AP (EIF2A/CDA02 antibody) at dilution of 1:200 (under 40x lens). Heat mediated antigen retrieval with Tris-EDTA buffer (pH 9.0).



Immunofluorescent analysis of (-20°C Ethanol) fixed HepG2 cells using EIF2A/CDA02 antibody (11233-1-AP) at dilution of 1:400 and CoraLite@488-Conjugated AffiniPure Goat Anti-Rabbit IgG(H+L).