

## Allgemeine Informationen

<b>Katalog-Nr.:</b> 11237-1-AP	<b>GenBank-Zugangsnummer:</b> BC014942	<b>Reinigungsmethode:</b> Antigen-Affinitätsreinigung
<b>Größe:</b> 150ul , Konzentration: 700 µg/ml von Nanodrop;	<b>GeneID (NCBI):</b> 89941	<b>Empfohlene Verdünnungen:</b> WB 1:1000-1:10000 IP 0.5-4.0 ug für IP und 1:500-1:2000 für WB IHC 1:50-1:500
<b>Wirt:</b> Kaninchen	<b>Vollständiger Name:</b> ras homolog gene family, member T2	
<b>Isotyp:</b> IgG	<b>Berechnete Masse:</b> 68 kDa	
<b>Immunogen Katalognummer:</b> AG1752	<b>Beobachtete Masse:</b> 80 kDa	

## Anwendungen

### Geprüfte Anwendungen:

IHC, IP, WB, ELISA

### In Publikationen genannte Anwendungen:

ColP, IF, IP, WB

### Getestete Reaktivität:

Human, Maus

### Zitierte Arten:

Affe, Human, Maus, Ratte

**Hinweis-IHC: Antigenmaskierung mit TE-Puffer pH 9,0 empfohlen. (\*) Wahlweise kann die Antigenmaskierung auch mit Citratpuffer pH 6,0 erfolgen.**

### Positivkontrollen:

**WB** : HEK-293T-Zellen, HeLa-Zellen, HepG2-Zellen, humanes Herzgewebe, humanes Hodengewebe, humanes Nierengewebe, K-562-Zellen, L02-Zellen, Mausherzgewebe

**IP** : L02-Zellen,

**IHC** : humanes Kolongewebe, humanes Herzgewebe, humanes Lungenkarzinomgewebe, humanes Nierengewebe

## Hintergrundinformationen

RHOT2 (Ras homolog gene family, member T2), also known as ARHT2, RASL or MIRO-2 (mitochondrial Rho GTPase 2), is a 618 amino acid single-pass type IV membrane protein as a member of the Rho family of GTPases. It is localized to the outer mitochondrial membrane and plays a role in mitochondrial trafficking and fusion-fission dynamics. RHOT2 is ubiquitously expressed with highest levels found in pancreas, heart, kidney and skeletal muscle. MIRO2 is highly phosphorylated at basal conditions, as evidenced by an immunoreactive band that electrophoretically migrates 7 kDa higher (~75 kDa) compared to its predicted molecular weight (68 kDa) (PMID: 28556983).

## Bemerkenswerte Veröffentlichungen

Verfasser	Pubmed ID	Journal	Anwendung
Crystal A Lee	28924745	Protein Cell	WB,IF
Matthew Yoke Wui Ng	36270994	Nat Commun	WB
Tatiana Brustovetsky	34685760	Cells	WB, ColP

## Lagerung

### Lagerungsbedingungen:

Bei -20°C lagern. Nach dem Versand ein Jahr lang stabil

### Lagerungspuffer:

PBS mit 0.02% Natriumazid und 50% Glycerin pH 7.3.

Aliquotieren ist nicht notwendig bei -20°C Lagerung

**\*\*\* 20ul-Größen enthalten 0.1% BSA**

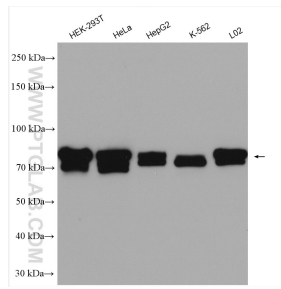
For technical support and original validation data for this product please contact:

T: 1 (888) 4PTGLAB (1-888-478-4522) (toll free in USA), or 1(312) 455-8498 (outside USA)

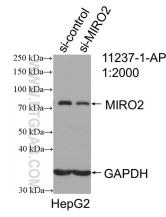
E: [proteintech@ptglab.com](mailto:proteintech@ptglab.com)  
W: [ptglab.com](http://ptglab.com)

**This product is exclusively available under Proteintech Group brand and is not available to purchase from any other manufacturer.**

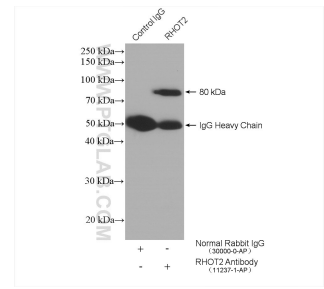
## Ausgewählte Validierungsdaten



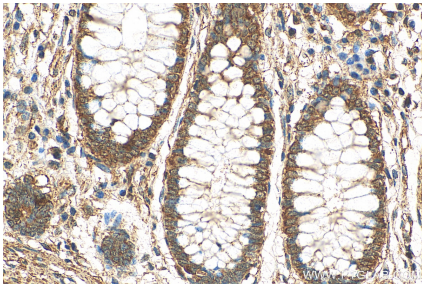
Various lysates were subjected to SDS PAGE followed by western blot with 11237-1-AP (MIRO2 antibody) at dilution of 1:10000 incubated at room temperature for 1.5 hours.



WB result of MIRO2 antibody (11237-1-AP; 1:2000; incubated at room temperature for 1.5 hours) with sh-Control and sh-MIRO2 transfected HepG2 cells.



IP result of anti-RHOT2 (IP:11237-1-AP, 4ug; Detection:11237-1-AP 1:1000) with L02 cells lysate 1360 ug.



Immunohistochemical analysis of paraffin-embedded human colon tissue slide using 11237-1-AP (MIRO2 antibody) at dilution of 1:200 (under 40x lens). Heat mediated antigen retrieval with Tris-EDTA buffer (pH 9.0).