

Allgemeine Informationen

Katalog-Nr.: 11239-1-AP	GenBank-Zugangsnummer: BC016058	Reinigungsmethode: Antigen-Affinitätsreinigung
Größe: 150ul , Konzentration: 400 µg/ml von Nanodrop;	GeneID (NCBI): 1513	Empfohlene Verdünnungen: IP 0.5-4.0 ug für IP und 1:500-1:1000 für WB
Wirt: Kaninchen	Vollständiger Name: cathepsin K	IHC 1:100-1:400
Isotyp: IgG	Berechnete Masse: 39 kDa	IF 1:50-1:500
Immunogen Katalognummer: AG1761	Beobachtete Masse: 29-36 kDa	

Anwendungen

Geprüfte Anwendungen: IF, IHC, IP, ELISA	Positivkontrollen: IP : ROS1728-Zellen,
In Publikationen genannte Anwendungen: IF, IHC	IHC : humanes Mammakarzinomgewebe, humanes Lungenkarzinomgewebe, humanes Osteosarkomgewebe
Getestete Reaktivität: Human, Maus, Ratte	IF : Maushirngewebe, HepG2-Zellen
Zitierte Arten: Human, Maus, Ratte, Zebrafisch	

Hinweis-IHC: Antigenmaskierung mit TE-Puffer pH 9,0 empfohlen. (*) Wahlweise kann die Antigenmaskierung auch mit Citratpuffer pH 6,0 erfolgen.

Hintergrundinformationen

CTSK(cathepsin K), also named as CTSO, CTSO2, is a recently identified lysosomal cysteine proteinase. CTSK is synthesized as a proenzyme of 38 kDa and subsequently enters acidic lysosomal compartments, in which the propeptide is cleaved and transformed into an active enzyme and it may influence adipocyte differentiation through modifying extracellular matrix components(PMID:16912123). It is revealed both the 46-kDa cathepsin-K precursor and the 30-kDa mature form in mouse bone extracts(PMID:9811821). The high CTSK protein levels are only detected in primary cultured fibroblasts derived from normal and neoplastic breast tissue, where the 37- and 25-kDa bands to be detected correspond to pro- and mature proteins through western blot(PMID:18765527). The full length protein has a signal peptides with 15 amino acids and a propeptide with 99 amino acids. CTSK may have cross reaction with the other members of cathepsin family and form a complex of 70 kDa with an unidentified subunit(PMID:1930136).

Bemerkenswerte Veröffentlichungen

Verfasser	Pubmed ID	Journal	Anwendung
Jada M Selma	34547771	Blood Adv	WB
Shuo Ni	32871020	Cell Prolif	WB
Mobai Li	36243012	Dev Cell	WB,IF

Lagerung

Lagerungsbedingungen:
Bei -20°C lagern. Nach dem Versand ein Jahr lang stabil
Lagerungspuffer:
PBS mit 0.02% Natriumazid und 50% Glycerin pH 7.3.
 Aliquotieren ist nicht notwendig bei -20°C Lagerung

*** 20ul-Größen enthalten 0.1% BSA

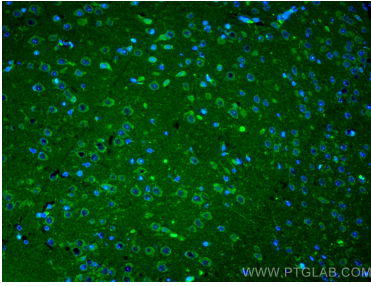
For technical support and original validation data for this product please contact:

T: 1 (888) 4PTGLAB (1-888-478-4522) (toll free in USA), or 1(312) 455-8498 (outside USA)

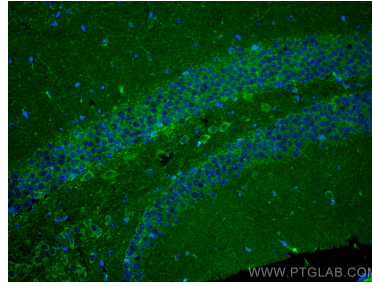
E: proteintech@ptglab.com
 W: ptglab.com

This product is exclusively available under Proteintech Group brand and is not available to purchase from any other manufacturer.

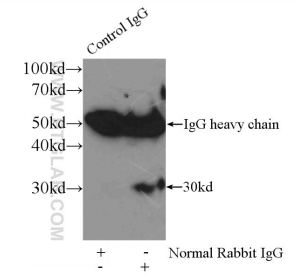
Ausgewählte Validierungsdaten



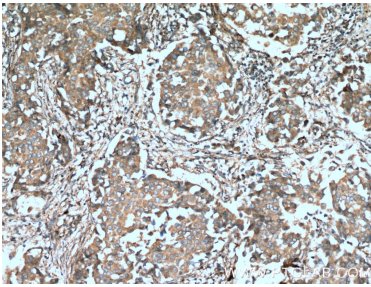
Immunofluorescent analysis of (4% PFA) fixed mouse brain tissue using Cathepsin K antibody (11239-1-AP) at dilution of 1:200 and CoraLite®488-Conjugated AffiniPure Goat Anti-Rabbit IgG(H+L).



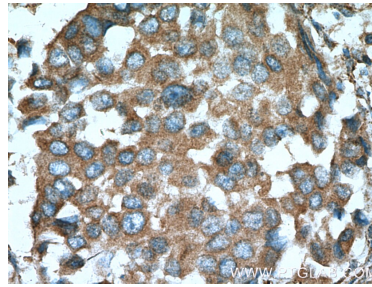
Immunofluorescent analysis of (4% PFA) fixed mouse brain tissue using Cathepsin K antibody (11239-1-AP) at dilution of 1:200 and CoraLite®488-Conjugated AffiniPure Goat Anti-Rabbit IgG(H+L).



IP Result of anti-Cathepsin K (IP:11239-1-AP, 3ug; Detection:11239-1-AP 1:500) with ROS1728 cells lysate 3200ug.



Immunohistochemical analysis of paraffin-embedded human breast cancer tissue slide using 11239-1-AP (Cathepsin K antibody at dilution of 1:200 (under 10x lens). Heat mediated antigen retrieval with Tris-EDTA buffer (pH 9.0).



Immunohistochemical analysis of paraffin-embedded human breast cancer tissue slide using 11239-1-AP (Cathepsin K antibody at dilution of 1:200 (under 40x lens). Heat mediated antigen retrieval with Tris-EDTA buffer (pH 9.0).