

Nur für Forschungszwecke

PDI Polyklonaler Antikörper

Katalog-Nr.:11245-1-AP

Vorgestelltes Produkt

43 Publikationen



Allgemeine Informationen

Katalog-Nr.:
11245-1-AP

Größe:
150ul , Konzentration: 850 µg/ml von
Nanodrop und 400 µg/ml durch die
Bradford-Methode mit BSA als
Standard;

Wirt:
Kaninchen

Isotyp:
IgG

Immunogen Katalognummer:
AG1747

GenBank-Zugangsnummer:
BC014504

GeneID (NCBI):
5034

Vollständiger Name:
prolyl 4-hydroxylase, beta
polypeptide

Berechnete Masse:
57 kDa

Beobachtete Masse:
57 kDa

Reinigungsmethode:

Antigen-Affinitätsreinigung

Empfohlene Verdünnungen:

WB 1:500-1:2000

IHC 1:50-1:500

IF 1:200-1:800

Anwendungen

Geprüfte Anwendungen:

FC, IF, IHC, WB, ELISA

In Publikationen genannte Anwendungen:

FC, IF, IHC, WB

Getestete Reaktivität:

Human, Maus, Ratte

Zitierte Arten:

Hausschwein, Human, Maus, Ratte

**Hinweis-IHC: Antigendemaskierung mit TE-
Puffer pH 9,0 empfohlen. (*) Wahlweise
kann die Antigendemaskierung auch mit
Citratpuffer pH 6,0 erfolgen.**

Positivkontrollen:

WB : COLO 320-Zellen, HEK-293-Zellen, HepG2-Zellen,
Mausherzgewebe, Maus-Thymusgewebe,
Rattenherzgewebe, Rattenhirngewebe, Ratten-
Thymusgewebe

IHC : humanes Prostatakarzinomgewebe,

IF : HepG2-Zellen,

Hintergrundinformationen

PDIA1(Protein disulfide-isomerase) is also named as ERBA2L, PDI, P4HB, PO4DB. It is a multifunctional protein that catalyzes the formation, breakage and rearrangement of disulfide bonds. In some cell types, it seems to be secreted or associated with the plasma membrane, where it undergoes constant shedding and replacement from intracellular sources. It can exist as homodimer and monomers and homotetramers may also occur(PMID:12095988).

Bemerkenswerte Veröffentlichungen

Verfasser	Pubmed ID	Journal	Anwendung
Liguo Yang	32943607	Cell Death Dis	IF
Linyu Sun	3455354	Mol Cell	IF
Nirav Florian Chhabra	34487921	Mol Metab	WB

Lagerung

Lagerungsbedingungen:

Bei -20°C lagern. Nach dem Versand ein Jahr lang stabil

Lagerungspuffer:

PBS mit 0.02% Natriumazid und 50% Glycerin pH 7.3.

Aliquotieren ist nicht notwendig bei -20°C Lagerung

*** 20ul-Größen enthalten 0.1% BSA

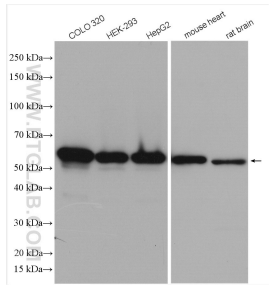
For technical support and original validation data for this product please contact:

T: 1 (888) 4PTGLAB (1-888-478-4522) (toll free
in USA), or 1(312) 455-8498 (outside USA)

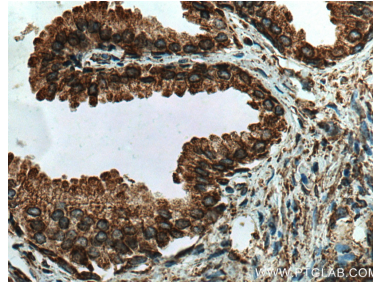
E: proteintech@ptglab.com
W: ptglab.com

This product is exclusively available under Proteintech Group brand and is not available to purchase from any other manufacturer.

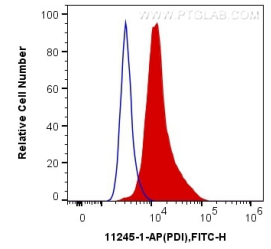
Ausgewählte Validierungsdaten



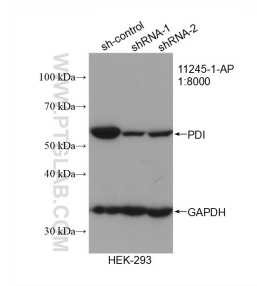
Various lysates were subjected to SDS PAGE followed by western blot with 11245-1-AP (PDI antibody) at dilution of 1:1000 incubated at room temperature for 1.5 hours.



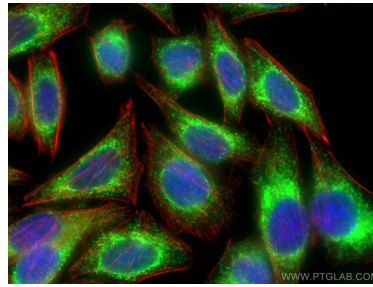
Immunohistochemical analysis of paraffin-embedded human prostate cancer tissue slide using 11245-1-AP (PDI antibody) at dilution of 1:200 (under 40x lens). Heat mediated antigen retrieval with Tris-EDTA buffer (pH 9.0).



1×10^6 HeLa cells were intracellularly stained with 0.4 μ g Anti-Human PDI (11245-1-AP) and CoraLite@488-Conjugated AffiniPure Goat Anti-Rabbit IgG(H+L) at dilution 1:1000 (red), or 0.4 μ g Control Antibody. Cells were fixed with 4% PFA and permeabilized with Flow Cytometry Perm Buffer (PF00011-C).



WB result of PDI antibody (11245-1-AP; 1:8000; incubated at room temperature for 1.5 hours) with sh-Control and sh-PDI transfected HEK-293 cells.



Immunofluorescent analysis of (-20°C Ethanol) fixed HepG2 cells using PDI antibody (11245-1-AP) at dilution of 1:400 and CoraLite@488-Conjugated AffiniPure Goat Anti-Rabbit IgG(H+L), CL594-Phalloidin (red). DAPI (blue).