

Nur für Forschungszwecke

S100A10 Polyklonaler Antikörper

Katalog-Nr.: 11250-1-AP

Vorgestelltes Produkt

29 Publikationen



Allgemeine Informationen

Katalog-Nr.: 11250-1-AP	GenBank-Zugangsnummer: BC015973	Reinigungsmethode: Antigen-Affinitätsreinigung
Größe: 150ul, Konzentration: 500 µg/ml von Nanodrop;	GeneID (NCBI): 6281	Empfohlene Verdünnungen: WB 1:500-1:2000 IHC 1:100-1:1000 IF 1:50-1:500
Wirt: Kaninchen	Vollständiger Name: S100 calcium binding protein A10	
Isotyp: IgG	Berechnete Masse: 11 kDa	
Immunogen Katalognummer: AG1779	Beobachtete Masse: 11 kDa	

Anwendungen

Geprüfte Anwendungen:

FC, IF, IHC, WB, ELISA

In Publikationen genannte Anwendungen:

IF, IHC, IP, WB

Getestete Reaktivität:

Human

Zitierte Arten:

Human, Maus, Ratte

Hinweis-IHC: Antigendemaskierung mit TE-Puffer pH 9,0 empfohlen. (*) Wahlweise kann die Antigendemaskierung auch mit Citratpuffer pH 6,0 erfolgen.

Positivkontrollen:

WB: A431-Zellen, HaCaT-Zellen, HeLa-Zellen, HT-29-Zellen, humanes Lungengewebe

IHC: humanes Lungenkarzinomgewebe, humanes Gliomgewebe, humanes Hautgewebe, humanes Pankreaskarzinomgewebe, humanes Prostatahyperplasie-Gewebe, humanes Zervixkarzinomgewebe

IF: HepG2-Zellen, HeLa-Zellen

Hintergrundinformationen

S100A10, also known as p11, is a member of the S100 family of small, EF hand containing dimeric proteins. S100 proteins are localized in the cytoplasm and/or nucleus of a wide range of cells, and involved in the regulation of a number of cellular processes such as cell cycle progression and differentiation. S100A10 is present on the surface of endothelial and other cells in a heterotetrameric complex with another Ca(2+)-binding protein, annexin II. S100A10 may function in exocytosis and endocytosis.

Bemerkenswerte Veröffentlichungen

Verfasser	Pubmed ID	Journal	Anwendung
Xiao Zhai	34496892	J Nanobiotechnology	IF
Xi He	34496236	Cell Rep	
Monica R Langley	34493542	J Neurosci	IHC, IP

Lagerung

Lagerungsbedingungen:

Bei -20°C lagern. Nach dem Versand ein Jahr lang stabil

Lagerungspuffer:

PBS mit 0.02% Natriumazid und 50% Glycerin pH 7.3.

Aliquotieren ist nicht notwendig bei -20°C Lagerung

*** 20ul-Größen enthalten 0.1% BSA

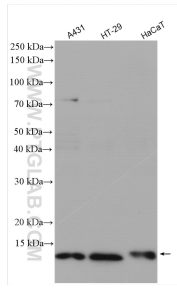
For technical support and original validation data for this product please contact:

T: 1 (888) 4PTGLAB (1-888-478-4522) (toll free in USA), or 1(312) 455-8498 (outside USA)

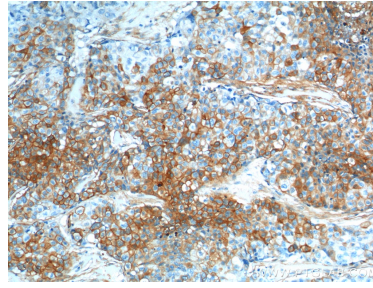
E: proteintech@ptglab.com
W: ptglab.com

This product is exclusively available under Proteintech Group brand and is not available to purchase from any other manufacturer.

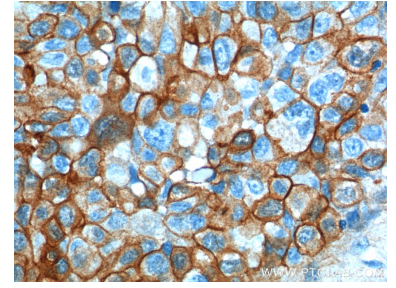
Ausgewählte Validierungsdaten



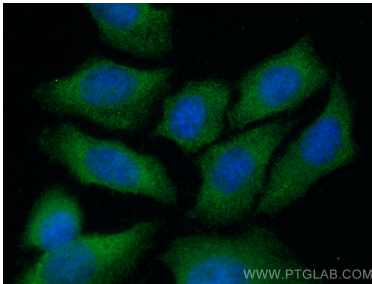
Various lysates were subjected to SDS PAGE followed by western blot with 11250-1-AP (S100A10 antibody) at dilution of 1:1000 incubated at room temperature for 1.5 hours.



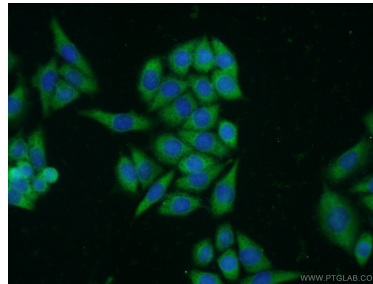
Immunohistochemical analysis of paraffin-embedded human lung cancer tissue slide using 11250-1-AP (S100A10 Antibody) at dilution of 1:400 (under 10x lens).



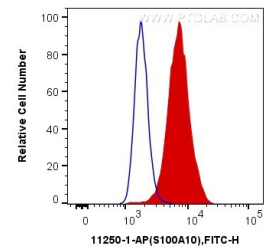
Immunohistochemical analysis of paraffin-embedded human lung cancer tissue slide using 11250-1-AP (S100A10 Antibody) at dilution of 1:400 (under 40x lens).



Immunofluorescent analysis of (-20°C Methanol) fixed HepG2 cells using S100A10 antibody (11250-1-AP) at dilution of 1:200 and CoraLite@488-Conjugated AffiniPure Goat Anti-Rabbit IgG(H+L).



Immunofluorescent analysis of HeLa cells using 11250-1-AP (S100A10 antibody) at dilution of 1:50 and Alexa Fluor 488-conjugated AffiniPure Goat Anti-Rabbit IgG(H+L).



1×10^6 HeLa cells were intracellularly stained with 0.2 μ g Anti-Human S100A10 (11250-1-AP) and CoraLite@488-Conjugated AffiniPure Goat Anti-Rabbit IgG(H+L) at dilution 1:1000 (red), or 0.2 μ g Control Antibody. Cells were fixed with 4% PFA and permeabilized with Flow Cytometry Perm Buffer (PF00011-C).