

Allgemeine Informationen

Katalog-Nr.: 11257-1-AP	GenBank-Zugangsnummer: BC013992	Reinigungsmethode: Antigen-Affinitätsreinigung
Größe: 150ul , Konzentration: 500 µg/ml von Nanodrop;	GeneID (NCBI): 5595	Empfohlene Verdünnungen: WB 1:2000-1:16000 IHC 1:100-1:400 IF 1:10-1:100
Wirt: Kaninchen	Vollständiger Name: mitogen-activated protein kinase 3	
Isotyp: IgG	Berechnete Masse: 43 kDa	
Immunogen Katalognummer: AG1759	Beobachtete Masse: 38-44 kDa	

Anwendungen

Geprüfte Anwendungen:

FC, IF, IHC, WB, ELISA

In Publikationen genannte Anwendungen:

IF, IHC, WB

Getestete Reaktivität:

Human, Maus, Ratte

Zitierte Arten:

Hausschwein, Human, Maus, Ratte

Hinweis-IHC: Antigenmaskierung mit TE-Puffer pH 9,0 empfohlen. (*) Wahlweise kann die Antigenmaskierung auch mit Citratpuffer pH 6,0 erfolgen.

Positivkontrollen:

WB : NIH/3T3-Zellen, C6-Zellen, HEK-293-Zellen, HeLa-Zellen, Maushirngewebe, Mauslungengewebe, PC-12-Zellen

IHC : humanes Kolonkarzinomgewebe, humanes Mammakarzinomgewebe

IF : A375-Zellen, MCF-7-Zellen

Hintergrundinformationen

ERK1 and ERK2 belongs to the protein kinase superfamily. It is involved in both the initiation and regulation of meiosis, mitosis, and postmitotic functions in differentiated cells by phosphorylating a number of transcription factors such as ELK-1. ERK1/2 catalized the reaction: ATP + a protein = ADP + a phosphoprotein. It is activated by tyrosine phosphorylation in response to INS and NGF. This antibody can recognize both ERK1 and ERK2 with the molecular mass of 38-44 kDa.

Bemerkenswerte Veröffentlichungen

Verfasser	Pubmed ID	Journal	Anwendung
Xiao-Feng Zhu	36180975	Phytother Res	WB
Hui Wang	36243659	Hepatobiliary Pancreat Dis Int	WB
Hongxia Li	34558311	Epigenomics	WB

Lagerung

Lagerungsbedingungen:

Bei -20°C lagern. Nach dem Versand ein Jahr lang stabil

Lagerungspuffer:

PBS mit 0.02% Natriumazid und 50% Glycerin pH 7.3.

Aliquotieren ist nicht notwendig bei -20°C Lagerung

*** 20ul-Größen enthalten 0.1% BSA

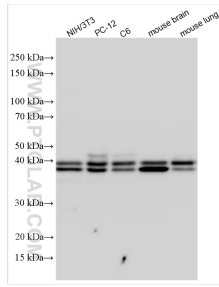
For technical support and original validation data for this product please contact:

T: 1 (888) 4PTGLAB (1-888-478-4522) (toll free in USA), or 1(312) 455-8498 (outside USA)

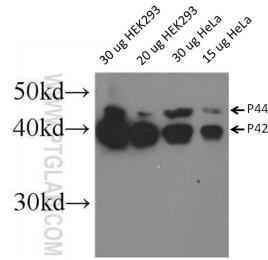
E: proteintech@ptglab.com
W: ptglab.com

This product is exclusively available under Proteintech Group brand and is not available to purchase from any other manufacturer.

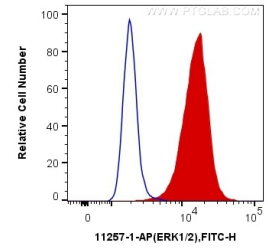
Ausgewählte Validierungsdaten



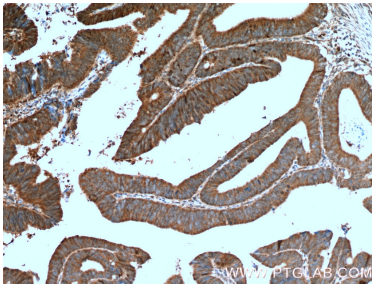
Various lysates were subjected to SDS PAGE followed by western blot with 11257-1-AP (ERK1/2 antibody) at dilution of 1:8000 incubated at room temperature for 1.5 hours.



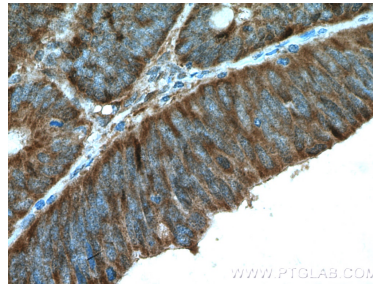
WB result of ERK1/2 antibody (11257-1-AP, 1:1000) with HeLa and HEK293 cells.



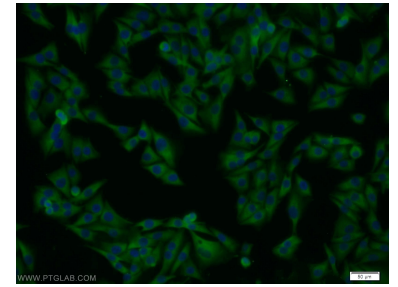
1×10^6 HeLa cells were intracellularly stained with 0.4 ug Anti-Human ERK1/2 (11257-1-AP) and CoraLite®488-Conjugated AffiniPure Goat Anti-Rabbit IgG(H+L) at dilution 1:1000 (red), or 0.4 ug Control Antibody. Cells were fixed with 4% PFA and permeabilized with Flow Cytometry Perm Buffer (PF00011-C).



Immunohistochemical analysis of paraffin-embedded human colon cancer tissue slide using 11257-1-AP (ERK1/2 Antibody) at dilution of 1:200 (under 10x lens). Heat mediated antigen retrieval with Tris-EDTA buffer (pH 9.0).



Immunohistochemical analysis of paraffin-embedded human colon cancer tissue slide using 11257-1-AP (ERK1/2 Antibody) at dilution of 1:200 (under 40x lens). Heat mediated antigen retrieval with Tris-EDTA buffer (pH 9.0).



Immunofluorescent analysis of A375 cells using 11257-1-AP (ERK1/2 antibody) at dilution of 1:25 and Alexa Fluor 488-conjugated AffiniPure Goat Anti-Rabbit IgG(H+L).