

Nur für Forschungszwecke

CREB3 Polyklonaler Antikörper

Katalog-Nr.:11275-1-AP

Vorgestelltes Produkt

14 Publikationen



Allgemeine Informationen

Katalog-Nr.:
11275-1-AP

Größe:
150ul, Konzentration: 450 µg/ml von
Nanodrop und 150 µg/ml durch die
Bradford-Methode mit BSA als
Standard;

Wirt:
Kaninchen

Isotyp:
IgG

Immunogen Katalognummer:
AG1823

GenBank-Zugangsnummer:
BC009402

GeneID (NCBI):
10488

Vollständiger Name:
cAMP responsive element binding
protein 3

Berechnete Masse:
44 kDa

Beobachtete Masse:
40-64 kDa

Reinigungsmethode:

Antigen-Affinitätsreinigung

Empfohlene Verdünnungen:

WB 1:500-1:1000

IF 1:50-1:500

Anwendungen

Geprüfte Anwendungen:

IF, WB, ELISA

In Publikationen genannte Anwendungen:

ChIP, IF, IHC, IP, WB

Getestete Reaktivität:

Human

Zitierte Arten:

Human, Maus

Positivkontrollen:

WB: Jurkat-Zellen, HeLa-Zellen

IF: PC-3-Zellen,

Hintergrundinformationen

CREB3, also named as LZIP and Luman, belongs to the bZIP family and ATF subfamily. It is a transcription factors activated upon intramembrane proteolysis (RIP), binds the cAMP response element (CRE) (consensus: 5'-GTGACGT[AG][AG]-3'), a sequence present in many viral and cellular promoters. CREB3 binds to and requires HCFC1 as a coactivator. The activity and expression are suppressed when the HCFC1-CREB3 complex binds with CREBZF. Participates in LKN-1/CCL15-induced chemotaxis signaling. CREB3 is N-glycosylated and released by proteolysis. So the MW of CREB3 emirate 40kd to 64kd (PMID: 12138176).

Bemerkenswerte Veröffentlichungen

Verfasser	Pubmed ID	Journal	Anwendung
Jenna Penney	30337854	Front Mol Neurosci	WB,IF,IP,ChIP
Ryoichi Murase	36152228	Mol Biol Rep	WB
Suhyun Kim	36057892	Cell Mol Life Sci	WB,IHC

Lagerung

Lagerungsbedingungen:

Bei -20°C lagern. Nach dem Versand ein Jahr lang stabil

Lagerungspuffer:

PBS mit 0.02% Natriumazid und 50% Glycerin pH 7.3.

Aliquotieren ist nicht notwendig bei -20°C Lagerung

*** 20ul-Größen enthalten 0.1% BSA

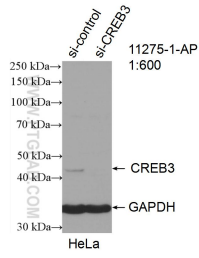
For technical support and original validation data for this product please contact:

T: 1 (888) 4PTGLAB (1-888-478-4522) (toll free
in USA), or 1(312) 455-8498 (outside USA)

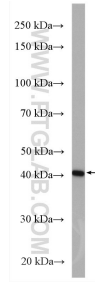
E: proteintech@ptglab.com
W: ptglab.com

This product is exclusively available under Proteintech Group brand and is not available to purchase from any other manufacturer.

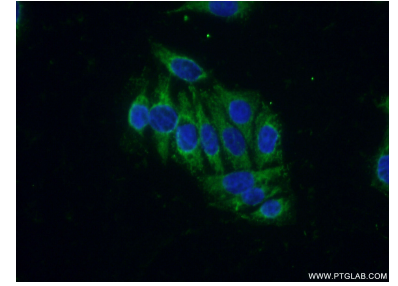
Ausgewählte Validierungsdaten



WB result of CREB3 antibody (11275-1-AP; 1:600; incubated at room temperature for 1.5 hours) with sh-Control and sh-CREB3 transfected HeLa cells.



Jurkat cells were subjected to SDS PAGE followed by western blot with 11275-1-AP (CREB3 antibody) at dilution of 1:600 incubated at room temperature for 1.5 hours.



Immunofluorescent analysis of (-20°C Ethanol) fixed PC-3 cells using 11275-1-AP (CREB3 antibody) at dilution of 1:50 and Alexa Fluor 488-conjugated AffiniPure Goat Anti-Rabbit IgG(H+L).