

Nur für Forschungszwecke

# Ribosomal protein L4 Polyklonaler Antikörper



Katalog-Nr.:11302-1-AP

Vorgestelltes Produkt

29 Publikationen

## Allgemeine Informationen

<b>Katalog-Nr.:</b> 11302-1-AP	<b>GenBank-Zugangsnummer:</b> BC009888	<b>Reinigungsmethode:</b> Antigen-Affinitätsreinigung
<b>Größe:</b> 150ul , Konzentration: 900 µg/ml von Nanodrop;	<b>GeneID (NCBI):</b> 6124	<b>Empfohlene Verdünnungen:</b> WB 1:2000-1:10000 IP 0.5-4.0 ug für IP und 1:500-1:1000 für WB
<b>Wirt:</b> Kaninchen	<b>Vollständiger Name:</b> ribosomal protein L4	<b>IHC 1:50-1:500</b> <b>IF 1:20-1:200</b>
<b>Isotyp:</b> IgG	<b>Berechnete Masse:</b> 48 kDa	
<b>Immunogen Katalognummer:</b> AG1828	<b>Beobachtete Masse:</b> 48 kDa	

## Anwendungen

**Geprüfte Anwendungen:**  
FC, IF, IHC, IP, WB, ELISA

**In Publikationen genannte Anwendungen:**  
FC, IF, IP, RIP, WB

**Getestete Reaktivität:**  
Human, Maus, Ratte

**Zitierte Arten:**  
Arabidopsis, Human, Maus, Reis

**Hinweis-IHC: Antigenmaskierung mit TE-Puffer pH 9,0 empfohlen. (\*) Wahlweise kann die Antigenmaskierung auch mit Citratpuffer pH 6,0 erfolgen.**

**Positivkontrollen:**

**WB :** HeLa-Zellen, HepG2-Zellen, MCF-7-Zellen, Ratten-Skelettmuskelgewebe

**IP :** K-562-Zellen,

**IHC :** humanes Lymphomgewebe,

**IF :** HepG2-Zellen,

## Hintergrundinformationen

60S ribosomal protein L4 is encoded by RPL4 (or RPL1) gene. RPL4 is a component of 60S subunit of ribosome, and belongs to the L4E family. By interacting with c-Myb, RPL4 plays a important role in c-myc expression in response to growth factor and nutritional signals. Recently RPL4 was reported to be able to increase efficiency of viral recoding sequence.

## Bemerkenswerte Veröffentlichungen

Verfasser	Pubmed ID	Journal	Anwendung
Bartoli Kristen MKM	21795388	Mol Biol Cell	WB
Zekun Wang	34653226	PLoS Pathog	WB
Annie Hien	33054857	Mol Autism	WB

## Lagerung

**Lagerungsbedingungen:**

Bei -20°C lagern. Nach dem Versand ein Jahr lang stabil

**Lagerungspuffer:**

PBS mit 0.02% Natriumazid und 50% Glycerin pH 7.3.

Aliquotieren ist nicht notwendig bei -20°C Lagerung

**\*\*\* 20ul-Größen enthalten 0.1% BSA**

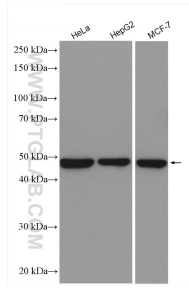
For technical support and original validation data for this product please contact:

T: 1 (888) 4PTGLAB (1-888-478-4522) (toll free in USA), or 1(312) 455-8498 (outside USA)

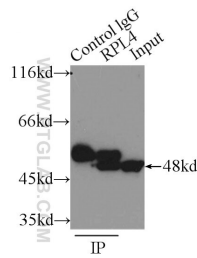
E: proteintech@ptglab.com  
W: ptglab.com

**This product is exclusively available under Proteintech Group brand and is not available to purchase from any other manufacturer.**

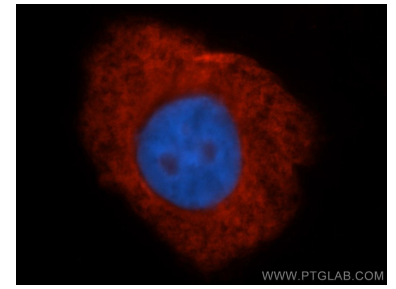
## Ausgewählte Validierungsdaten



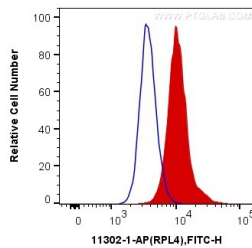
Various lysates were subjected to SDS PAGE followed by western blot with 11302-1-AP (Ribosomal protein L4 antibody) at dilution of 1:5000 incubated at room temperature for 1.5 hours.



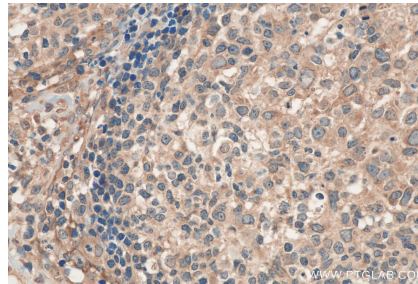
IP Result of anti-ribosomal protein L4 (IP:11302-1-AP, 3ug; Detection:11302-1-AP 1:800) with K-562 cells lysate 6000ug.



Immunofluorescent analysis of HepG2 cells using Ribosomal protein L4 antibody (11302-1-AP) at dilution of 1:50 and Rhodamine-Goat anti-Rabbit IgG.



1X10<sup>6</sup> HeLa cells were intracellularly stained with 0.2 ug Anti-Human Ribosomal protein L4 (11302-1-AP) and CoraLite@488-Conjugated AffiniPure Goat Anti-Rabbit IgG(H+L) at dilution 1:1000 (red), or 0.2 ug Control Antibody. Cells were fixed with 4% PFA and permeabilized with Flow Cytometry Perm Buffer (PF00011-C).



Immunohistochemical analysis of paraffin-embedded human lymphoma tissue slide using 11302-1-AP (Ribosomal protein L4 antibody) at dilution of 1:200 (under 40x lens). Heat mediated antigen retrieval with Tris-EDTA buffer (pH 9.0).