

Nur für Forschungszwecke

SERPINE2 Polyklonaler Antikörper

Katalog-Nr.:11303-1-AP

Vorgestelltes Produkt

8 Publikationen



Allgemeine Informationen

Katalog-Nr.:
11303-1-AP

Größe:
150ul , Konzentration: 450 µg/ml von
Nanodrop;

Wirt:
Kaninchen

Isotyp:
IgG

Immunogen Katalognummer:
AG1830

GenBank-Zugangsnummer:
BC015663

GeneID (NCBI):
5270

Vollständiger Name:
serpin peptidase inhibitor, clade E
(nexin, plasminogen activator
inhibitor type 1), member 2

Berechnete Masse:
44 kDa

Beobachtete Masse:
44-50 kDa

Reinigungsmethode:

Antigen-Affinitätsreinigung

Empfohlene Verdünnungen:

WB 1:500-1:1000
IP 0.5-4.0 ug für IP und 1:200-1:1000
für WB
IHC 1:20-1:200
IF 1:50-1:500

Anwendungen

Geprüfte Anwendungen:

IF, IHC, IP, WB, ELISA

In Publikationen genannte Anwendungen:

IF, IHC, IP, WB

Getestete Reaktivität:

Human, Maus, Ratte

Zitierte Arten:

Human, Maus, Ratte

Hinweis-IHC: Antigenmaskierung mit TE-Puffer pH 9,0 empfohlen. (*) Wahlweise kann die Antigenmaskierung auch mit Citratpuffer pH 6,0 erfolgen.

Positivkontrollen:

WB : C6-Zellen, A549-Zellen, MCF-7-Zellen, Rattenherzgewebe, Rattenhirngewebe

IP : A549-Zellen,

IHC : humanes Hodengewebe, humanes Pankreaskarzinomgewebe

IF : humanes Hodengewebe,

Hintergrundinformationen

SERPINE2 also called protease nexin-1 or glial-derived neurite promoting factor, is a member of the serine protease inhibitor (SERPIN) superfamily. It would be a potent inhibitor of the urokinase-plasminogen activator (uPA), tissue-type PA (tPA), thrombin, trypsin, factor X_{ia}, and prostaticin. SERPINE2 is widely expressed in various tissues, including endothelial cells, fibroblasts, smooth muscle cells, tumor cells, glial cells, neurons, and placental cells.

Bemerkenswerte Veröffentlichungen

Verfasser	Pubmed ID	Journal	Anwendung
Wei Cai	36170234	Autophagy	IP
Jingjing Zhang	34648881	Cancer Lett	WB,IHC,IP
Mary Ann Stepp	30446696	Sci Rep	IF

Lagerung

Lagerungsbedingungen:

Bei -20°C lagern. Nach dem Versand ein Jahr lang stabil

Lagerungspuffer:

PBS mit 0.02% Natriumazid und 50% Glycerin pH 7.3.

Aliquotieren ist nicht notwendig bei -20°C Lagerung

*** 20ul-Größen enthalten 0.1% BSA

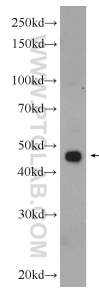
For technical support and original validation data for this product please contact:

T: 1 (888) 4PTGLAB (1-888-478-4522) (toll free in USA), or 1(312) 455-8498 (outside USA)

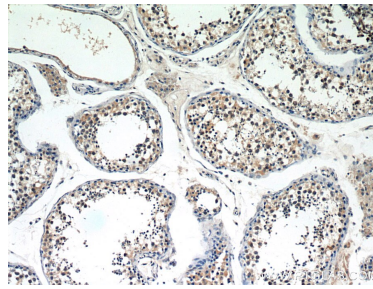
E: proteintech@ptglab.com
W: ptglab.com

This product is exclusively available under Proteintech Group brand and is not available to purchase from any other manufacturer.

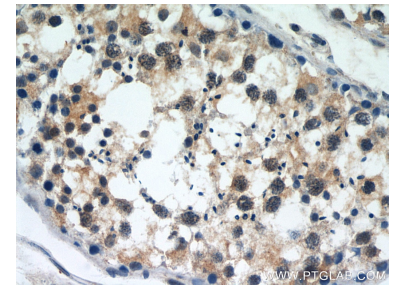
Ausgewählte Validierungsdaten



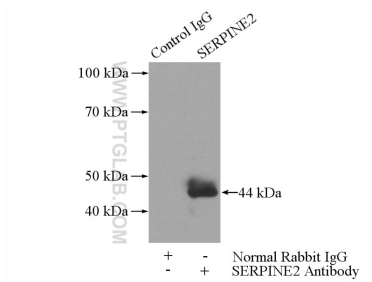
C6 cells were subjected to SDS PAGE followed by western blot with 11303-1-AP (SERPINE2 Antibody) at dilution of 1:600 incubated at room temperature for 1.5 hours.



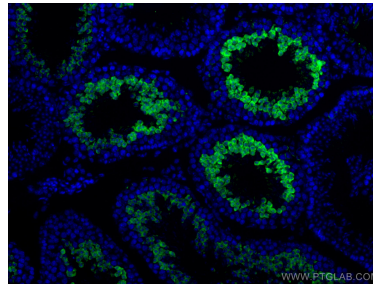
Immunohistochemical analysis of paraffin-embedded human testis slide using 11303-1-AP (SERPINE2 Antibody) at dilution of 1:50.



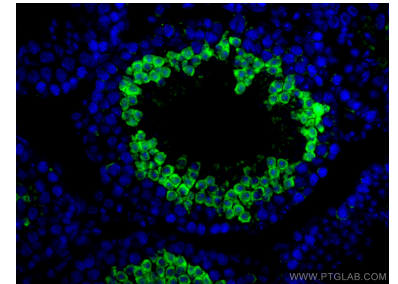
Immunohistochemical analysis of paraffin-embedded human testis slide using 11303-1-AP (SERPINE2 Antibody) at dilution of 1:50.



IP Result of anti-SERPINE2 (IP:11303-1-AP, 3ug; Detection:11303-1-AP 1:300) with A549 cells lysate 2800ug.



Immunofluorescent analysis of (4% PFA) fixed human testis tissue using SERPINE2 antibody (11303-1-AP) at dilution of 1:200 and CoraLite@488-Conjugated AffiniPure Goat Anti-Rabbit IgG(H+L).



Immunofluorescent analysis of (4% PFA) fixed human testis tissue using SERPINE2 antibody (11303-1-AP) at dilution of 1:200 and CoraLite@488-Conjugated AffiniPure Goat Anti-Rabbit IgG(H+L).