

Nur für Forschungszwecke

Beclin 1 Polyklonaler Antikörper

Katalog-Nr.: 11306-1-AP

Vorgestelltes Produkt

689 Publikationen



Allgemeine Informationen

Katalog-Nr.: 11306-1-AP	GenBank-Zugangsnummer: BC010276	Reinigungsmethode: Antigen-Affinitätsreinigung
Größe: 150ul, Konzentration: 400 µg/ml von Nanodrop;	GeneID (NCBI): 8678	Empfohlene Verdünnungen: WB 1:1000-1:10000
Wirt: Kaninchen	Vollständiger Name: beclin 1, autophagy related	IP 0.5-4.0 µg für IP und 1:500-1:2000 für WB
Isotyp: IgG	Berechnete Masse: 52 kDa	IHC 1:50-1:500
Immunogen Katalognummer: AG1843	Beobachtete Masse: 52-60 kDa	IF 1:20-1:200

Anwendungen

Geprüfte Anwendungen:

IF, IHC, IP, WB, ELISA

In Publikationen genannte Anwendungen:

CoIP, IF, IHC, IP, WB

Getestete Reaktivität:

Human, Maus, Ratte

Zitierte Arten:

Ente, Fisch, Hamster, Hausschwein, Huhn, Human, Maus, Rind, Ziege, Garnele

Hinweis-IHC: Antigendemaskierung mit TE-Puffer pH 9,0 empfohlen. (*) Wahlweise kann die Antigendemaskierung auch mit Citratpuffer pH 6,0 erfolgen.

Positivkontrollen:

WB: C6-Zellen, A431-Zellen, HEK-293-Zellen, HeLa-Zellen, HT-1080-Zellen, humanes Plazenta-Gewebe, L02-Zellen, Maushirngewebe, MDA-MB-453s-Zellen, NIH/3T3-Zellen, PC-3-Zellen, Raji-Zellen, Rattenhirngewebe, SH-SY5Y-Zellen

IP: MDA-MB-453s-Zellen,

IHC: humanes Mammakarzinomgewebe, humanes Kolonkarzinomgewebe, humanes Leberkarzinomgewebe, humanes Magengewebe, humanes Mammahyperplasie-Gewebe, humanes Prostatahyperplasie-Gewebe, humanes Zervixkarzinomgewebe

IF: NIH/3T3-Zellen, Maushirngewebe

Hintergrundinformationen

Beclin 1, also known as ATG6 or VPS30, interacts with various cofactors (e.g. Ambra1, Barkor (Atg14), Rubicon, or UVRAG) to regulate the lipid kinase Vps34 and promote the formation of the BECLIN1-Vps34-Vps15 complex, hence inducing autophagy. Its function (via the BH3 domain) is inhibited by Bcl-2 or Bcl-XL. Beclin 1 (BECN1) is a crucial molecule in the control of the autophagic activity, and its activity is regulated by multiple mechanisms, including the post-translational modification, protein-protein interaction, and subcellular localization. It plays a role in crosstalk between apoptosis and autophagy. It has been reported that Beclin 1 can be cleaved into fragments of 50, 37 and 35 kDa during apoptosis. It is involved in many disorders, including neurodegeneration and cancer (tumorigenesis). Beclin 1 is a mammalian tumor suppressor, and its gene is monoallelically deleted in 75% of ovarian, 50% of breast, and 40% of prostate cancers. Decreased expression of Beclin 1 has also been observed in human brain and lung tumors. The level of Beclin 1 was decreased in the affected brain regions of patients with Alzheimer's disease early in the disease process. Recent studies have also shown that gain and loss of Beclin 1 function affects the death of heart cells.

Bemerkenswerte Veröffentlichungen

Verfasser	Pubmed ID	Journal	Anwendung
Samana Batool	30274346	Int J Mol Sci	WB
Jiawei Hao	36126167	Autophagy	WB
Wenyuan Li	34588431	Cell Death Discov	WB

Lagerung

Lagerungsbedingungen:

Bei -20°C lagern. Nach dem Versand ein Jahr lang stabil

Lagerungspuffer:

PBS mit 0.02% Natriumazid und 50% Glycerin pH 7.3.

Aliquotieren ist nicht notwendig bei -20°C Lagerung

*** 20ul-Größen enthalten 0.1% BSA

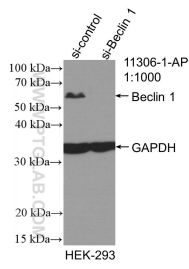
For technical support and original validation data for this product please contact:

T: 1 (888) 4PTGLAB (1-888-478-4522) (toll free in USA), or 1(312) 455-8498 (outside USA)

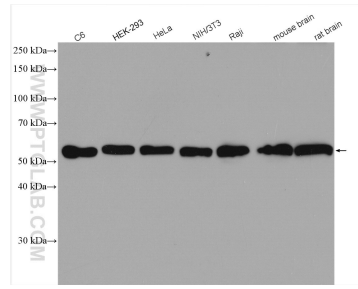
E: proteintech@ptglab.com
W: ptglab.com

This product is exclusively available under Proteintech Group brand and is not available to purchase from any other manufacturer.

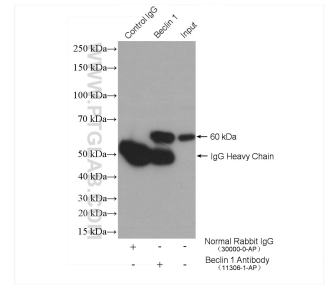
Ausgewählte Validierungsdaten



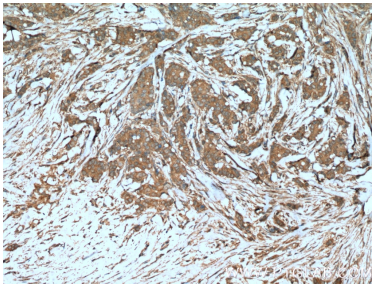
WB result of Beclin 1 antibody (11306-1-AP; 1:1000; incubated at room temperature for 1.5 hours) with sh-Control and sh-Beclin 1 transfected HEK-293 cells.



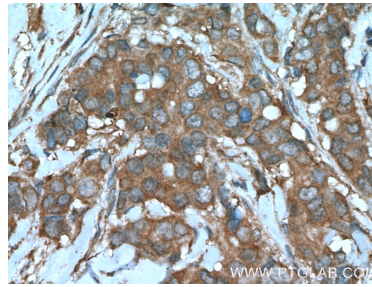
Various lysates were subjected to SDS PAGE followed by western blot with 11306-1-AP (Beclin 1 antibody) at dilution of 1:6000 incubated at room temperature for 1.5 hours.



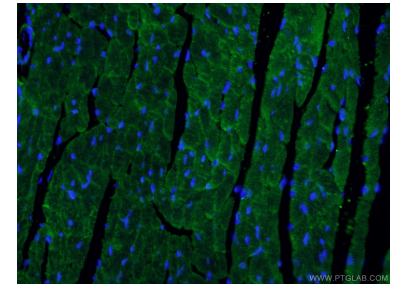
IP result of anti-Beclin 1 (IP:11306-1-AP, 4ug; Detection:11306-1-AP 1:1000) with MDA-MB-453 cells lysate 2800 ug.



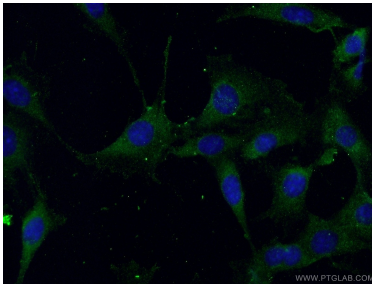
Immunohistochemical analysis of paraffin-embedded human breast cancer tissue slide using 11306-1-AP (Beclin 1 Antibody) at dilution of 1:200 (under 10x lens). Heat mediated antigen retrieval with Tris-EDTA buffer (pH 9.0).



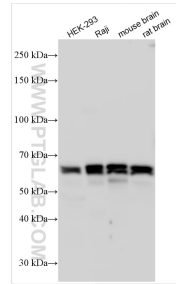
Immunohistochemical analysis of paraffin-embedded human breast cancer tissue slide using 11306-1-AP (Beclin 1 Antibody) at dilution of 1:200 (under 40x lens). Heat mediated antigen retrieval with Tris-EDTA buffer (pH 9.0).



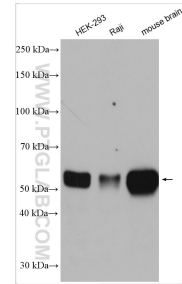
Immunofluorescent analysis of (4% PFA) fixed mouse heart tissue using 11306-1-AP (Beclin 1 antibody) at dilution of 1:50 and Alexa Fluor 488-Conjugated AffiniPure Goat Anti-Rabbit IgG(H+L).



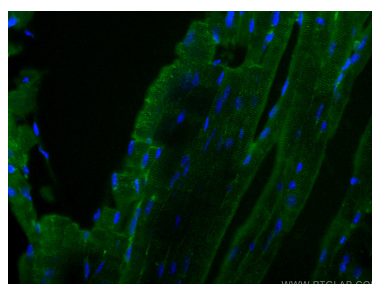
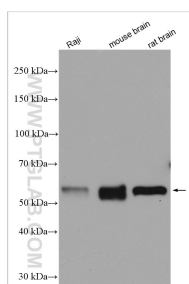
Immunofluorescent analysis of NIH/3T3 cells using 11306-1-AP (Beclin 1 antibody) at dilution of 1:50 and Alexa Fluor 488-conjugated AffiniPure Goat Anti-Rabbit IgG(H+L).



Various lysates were subjected to SDS PAGE followed by western blot with 11306-1-AP (Beclin 1 antibody) at dilution of 1:8000 incubated at room temperature for 1.5 hours.



Various lysates were subjected to SDS PAGE followed by western blot with 11306-1-AP (Beclin 1 antibody) at dilution of 1:8000 incubated at room temperature for 1.5 hours.



Various lysates were subjected to SDS PAGE followed by western blot with 11306-1-AP (Beclin 1 antibody) at dilution of 1:8000 incubated at room temperature for 1.5 hours.

Immunofluorescent analysis of (4% PFA) fixed mouse heart tissue using Beclin 1 antibody (11306-1-AP) at dilution of 1:400 and CoraLite® 488-Conjugated AffiniPure Goat Anti-Rabbit IgG(H+L).