

Nur für Forschungszwecke

# DNASE1L3 Polyklonaler Antikörper

Katalog-Nr.:11330-1-AP



## Allgemeine Informationen

Katalog-Nr.:  
11330-1-AP

Größe:  
150ul, Konzentration: 400 µg/ml von  
Nanodrop und 267 µg/ml durch die  
Bradford-Methode mit BSA als  
Standard;

Wirt:  
Kaninchen

Isotyp:  
IgG

Immunogen Katalognummer:  
AG1873

GenBank-Zugangsnummer:  
BC015831

GeneID (NCBI):  
1776

Vollständiger Name:  
deoxyribonuclease I-like 3

Berechnete Masse:  
305 aa, 36 kDa

Beobachtete Masse:  
33-38 kDa

Reinigungsmethode:

Antigen-Affinitätsreinigung

Empfohlene Verdünnungen:

WB 1:200-1:600

## Anwendungen

Geprüfte Anwendungen:

WB, ELISA

Getestete Reaktivität:

Human

Positivkontrollen:

WB: HEK-293-Zellen, Raji-Zellen

## Hintergrundinformationen

Deoxyribonuclease 1-like 3 (DNASE1L3, DNase gamma, DNase Y, LS-DNase) is member of a DNASE1 protein family that is identified by similar biochemical properties such as Ca<sup>2+</sup>/Mg<sup>2+</sup> dependency and an optimal pH of about 7.0 as well as by a high similarity in their nucleic acid and amino acid sequences [PMID:15796714]. It is an endonuclease and cleaves double-stranded DNA (and single-stranded DNA) producing 3'-OH/5'-P ends, which is Ca<sup>2+</sup>/Mg<sup>2+</sup>-dependent and inhibited by Zn<sup>2+</sup>, but not by monomeric actin [PMID:9665719]. In addition, it has been suggested to be involved in apoptotic DNA fragmentation of thymocytes neuronal PC12 cells, C2C12 myoblasts and of cell lines expressing the recombinant nuclease [PMID: 7957253, 9307016]

## Lagerung

Lagerungsbedingungen:

Bei -20°C lagern. Nach dem Versand ein Jahr lang stabil

Lagerungspuffer:

PBS mit 0.02% Natriumazid und 50% Glycerin pH 7.3.

Aliquotieren ist nicht notwendig bei -20°C Lagerung

**\*\*\* 20ul-Größen enthalten 0.1% BSA**

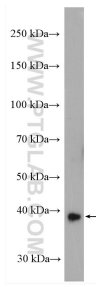
For technical support and original validation data for this product please contact:

T: 1 (888) 4PTGLAB (1-888-478-4522) (toll free  
in USA), or 1(312) 455-8498 (outside USA)

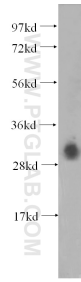
E: proteintech@ptglab.com  
W: ptglab.com

This product is exclusively available under Proteintech Group brand and is not available to purchase from any other manufacturer.

## Ausgewählte Validierungsdaten



Raji cells were subjected to SDS PAGE followed by western blot with 11330-1-AP (DNASE1L3 antibody) at dilution of 1:600 incubated at room temperature for 1.5 hours.



HEK-293 cells were subjected to SDS PAGE followed by western blot with 11330-1-AP (DNASE1L3 antibody) at dilution of 1:600 incubated at room temperature for 1.5 hours.