

Nur für Forschungszwecke

# HDGF Polyklonaler Antikörper

Katalog-Nr.:11344-1-AP

Vorgestelltes Produkt

19 Publikationen



## Allgemeine Informationen

Katalog-Nr.:  
11344-1-AP

Größe:  
150ul, Konzentration: 500 µg/ml von  
Nanodrop und 133 µg/ml durch die  
Bradford-Methode mit BSA als  
Standard;

Wirt:  
Kaninchen

Isotyp:  
IgG

Immunogen Katalognummer:  
AG1893

GenBank-Zugangsnummer:  
BC018991

GeneID (NCBI):  
3068

Vollständiger Name:  
hepatoma-derived growth factor  
(high-mobility group protein 1-like)

Berechnete Masse:  
26 kDa

Beobachtete Masse:  
40-45 kDa

Reinigungsmethode:

Antigen-Affinitätsreinigung

Empfohlene Verdünnungen:

WB 1:5000-1:50000  
IP 0.5-4.0 µg für IP und 1:500-1:2000  
für WB  
IHC 1:20-1:200  
IF 1:50-1:500

## Anwendungen

Geprüfte Anwendungen:

IF, IHC, IP, WB, ELISA

In Publikationen genannte Anwendungen:

ChIP, ColP, IF, IHC, IP, WB

Getestete Reaktivität:

Human

Zitierte Arten:

Human, Maus

**Hinweis-IHC: Antigenmaskierung mit TE-Puffer pH 9,0 empfohlen. (\*) Wahlweise kann die Antigenmaskierung auch mit Citratpuffer pH 6,0 erfolgen.**

Positivkontrollen:

WB : HepG2-Zellen, HEK-293T-Zellen, HeLa-Zellen

IP : HepG2-Zellen,

IHC : humanes Lungenkarzinomgewebe, humanes  
Kolonkarzinomgewebe, humanes  
Leberkarzinomgewebe, humanes  
Ovarialkarzinomgewebe

IF : HEK-293-Zellen,

## Hintergrundinformationen

HDGF, also named as HMG1L2, belongs to the HDGF family. HDGF is a mitogen for many cell types with nuclear localization necessary for its mitogenic activity. HDGF has also been identified as an important prognostic marker in pathologic cell growth, as it is overexpressed in a number of cancers with expression linked to a poor outcome in lung, esophageal, pancreatic and hepatic cancer. HDGF is highly expressed in human NSCLC tissues, predicting worse prognosis in resected NSCLCs. It might be useful molecular biomarker for predicting the prognosis of resected NSCLCs.

## Bemerkenswerte Veröffentlichungen

| Verfasser      | Pubmed ID | Journal                    | Anwendung |
|----------------|-----------|----------------------------|-----------|
| Zhou Yanyan Y  | 20846397  | Diagn Pathol               | WB,IHC    |
| Honghong Jiang | 31612005  | Oncol Lett                 | IHC       |
| Longbin Zheng  | 36265285  | Biochem Biophys Res Commun | WB        |

## Lagerung

Lagerungsbedingungen:

Bei -20°C lagern. Nach dem Versand ein Jahr lang stabil

Lagerungspuffer:

PBS mit 0.02% Natriumazid und 50% Glycerin pH 7.3.

Aliquotieren ist nicht notwendig bei -20°C Lagerung

\*\*\* 20ul-Größen enthalten 0.1% BSA

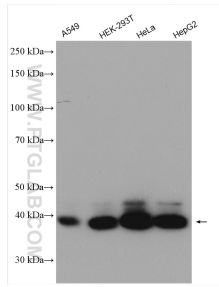
For technical support and original validation data for this product please contact:

T: 1 (888) 4PTGLAB (1-888-478-4522) (toll free  
in USA), or 1(312) 455-8498 (outside USA)

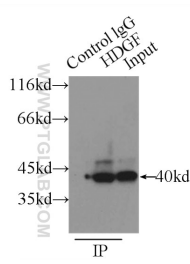
E: proteintech@ptglab.com  
W: ptglab.com

This product is exclusively available under Proteintech Group brand and is not available to purchase from any other manufacturer.

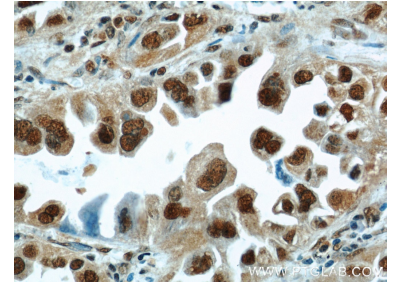
## Ausgewählte Validierungsdaten



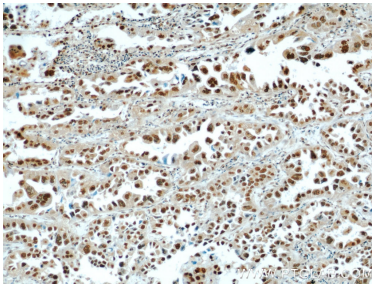
Various lysates were subjected to SDS PAGE followed by western blot with 11344-1-AP (HDGF antibody) at dilution of 1:20000 incubated at room temperature for 1.5 hours.



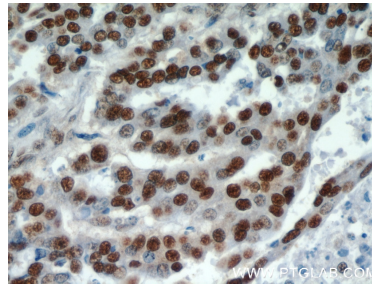
IP Result of anti-HDGF (IP:11344-1-AP, 3ug; Detection:11344-1-AP 1:1000) with HepG2 cells lysate 3000ug.



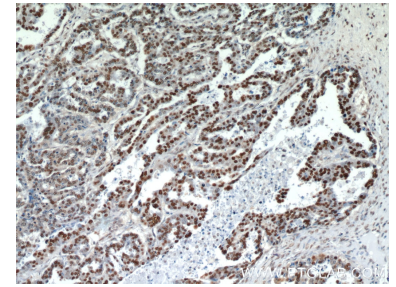
Immunohistochemical analysis of paraffin-embedded human lung cancer using 11344-1-AP (HDGF antibody) at dilution of 1:100 (under 40x lens).



Immunohistochemical analysis of paraffin-embedded human lung cancer using 11344-1-AP (HDGF antibody) at dilution of 1:100 (under 10x lens).



Immunohistochemical analysis of paraffin-embedded human ovary tumor using 11344-1-AP (HDGF antibody) at dilution of 1:100 (under 40x lens).



Immunohistochemical analysis of paraffin-embedded human ovary tumor using 11344-1-AP (HDGF antibody) at dilution of 1:100 (under 10x lens).



Immunofluorescent analysis of (4% PFA) fixed HEK-293 cells using HDGF antibody (11344-1-AP) at dilution of 1:200 and CoraLite®488-Conjugated AffiniPure Goat Anti-Rabbit IgG(H+L).