

Nur für Forschungszwecke

NSD3 Polyklonaler Antikörper

Katalog-Nr.:11345-1-AP

Vorgestelltes Produkt

15 Publikationen



Allgemeine Informationen

Katalog-Nr.: 11345-1-AP	GenBank-Zugangsnummer: BC012059	Reinigungsmethode: Antigen-Affinitätsreinigung
Größe: 150ul , Konzentration: 550 µg/ml von Nanodrop und 320 µg/ml durch die Bradford-Methode mit BSA als Standard;	GeneID (NCBI): 54904	Empfohlene Verdünnungen: WB 1:500-1:1000 IHC 1:20-1:200 IF 1:50-1:500
Wirt: Kaninchen	Vollständiger Name: Wolf-Hirschhorn syndrome candidate 1-like 1	
Isotyp: IgG	Berechnete Masse: 1437 aa, 162 kDa	
Immunogen Katalognummer: AG1894	Beobachtete Masse: 160-170 kDa, 68-72 kDa	

Anwendungen

Geprüfte Anwendungen: FC, IF, IHC, WB, ELISA	Positivkontrollen: WB : HeLa-Zellen, HEK-293-Zellen, Mausherzgewebe, Rattenherzgewebe IHC : humanes Lymphomgewebe, IF : HeLa-Zellen,
In Publikationen genannte Anwendungen: chIP, IF, IHC, WB	
Getestete Reaktivität: Human, Maus, Ratte	
Zitierte Arten: Human	
Hinweis-IHC: Antigenmaskierung mit TE-Puffer pH 9,0 empfohlen. (*) Wahlweise kann die Antigenmaskierung auch mit Citratpuffer pH 6,0 erfolgen.	

Hintergrundinformationen

WHSC1L1, also named as NSD3 and DC28, belongs to the histone-lysine methyltransferase family and SET2 subfamily. It is histone methyltransferase. WHSC1L1 is a potently transforming oncogenes based on the number of altered phenotypes expressed by the cells. It contains a PWWP-domain that is a methyl-lysine recognition motif involved in histone code modification and epigenetic regulation of gene expression. Knockdown of WHSC1L1 in 8p11-12-amplified breast cancer cells resulted in profound loss of growth and survival of these cells. (PMID: 20940404). This antibody recognize the long isoform (160-170 kDa) and short isoform (68-72 kDa).

Bemerkenswerte Veröffentlichungen

Verfasser	Pubmed ID	Journal	Anwendung
Ga-Young Jeong	32967925	Cancer Res	IHC
Verónica García-Carpizo	27604143	Sci Rep	
Duo Xu	36291782	Cancers (Basel)	IHC

Lagerung

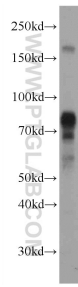
Lagerungsbedingungen:
Bei -20°C lagern. Nach dem Versand ein Jahr lang stabil
Lagerungspuffer:
PBS mit 0.02% Natriumazid und 50% Glycerin pH 7.3.
Aliquotieren ist nicht notwendig bei -20°C Lagerung

*** 20ul-Größen enthalten 0.1% BSA

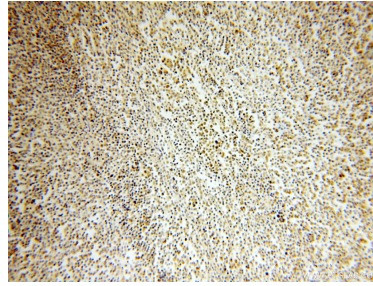
For technical support and original validation data for this product please contact:
T: 1 (888) 4PTGLAB (1-888-478-4522) (toll free in USA), or 1(312) 455-8498 (outside USA)
E: proteintech@ptglab.com
W: ptglab.com

This product is exclusively available under Proteintech Group brand and is not available to purchase from any other manufacturer.

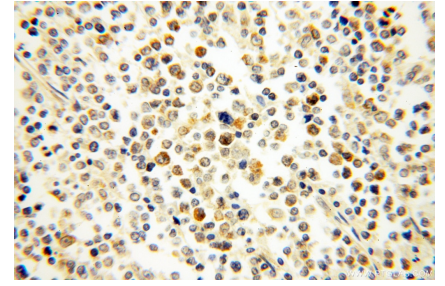
Ausgewählte Validierungsdaten



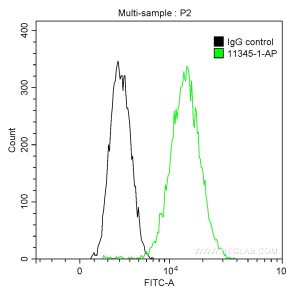
HeLa cells were subjected to SDS PAGE followed by western blot with 11345-1-AP (NSD3 antibody) at dilution of 1:600 incubated at room temperature for 1.5 hours.



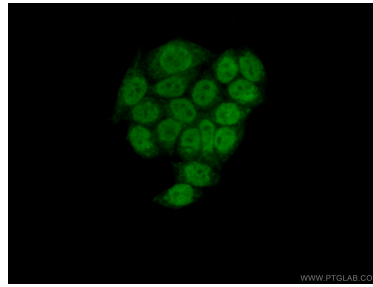
Immunohistochemical analysis of paraffin-embedded human lymphoma using 11345-1-AP (NSD3 antibody) at dilution of 1:50 (under 10x lens).



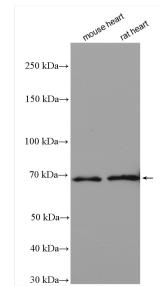
Immunohistochemical analysis of paraffin-embedded human lymphoma using 11345-1-AP (NSD3 antibody) at dilution of 1:50 (under 40x lens).



1x10⁶ HeLa cells were intracellularly stained with 0.2 ug Anti-Human NSD3 (11345-1-AP) and CoraLite@488-Conjugated AffiniPure Goat Anti-Rabbit IgG(H+L) at dilution 1:1000 (green), and 0.2 ug Control Antibody. Cells were fixed with 90% MeOH.



Immunofluorescent analysis of (10% Formaldehyde) fixed HeLa cells using 11345-1-AP (NSD3 antibody) at dilution of 1:50 and Alexa Fluor 488-conjugated AffiniPure Goat Anti-Rabbit IgG(H+L).



Various lysates were subjected to SDS PAGE followed by western blot with 11345-1-AP (NSD3 antibody) at dilution of 1:1500 incubated at room temperature for 1.5 hours.