

Allgemeine Informationen

Katalog-Nr.:

11372-1-AP

Größe:

150ul , Konzentration: 550 µg/ml von Nanodrop und 227 µg/ml durch die Bradford-Methode mit BSA als Standard;

Wirt:

Kaninchen

Isotyp:

IgG

Immunogen Katalognummer:

AG1930

GenBank-Zugangsnummer:

BC015729

GeneID (NCBI):

7090

Vollständiger Name:

transducin-like enhancer of split 3 (E(sp1) homolog, Drosophila)

Berechnete Masse:

772 aa, 83 kDa

Beobachtete Masse:

83 kDa

Reinigungsmethode:

Antigen-Affinitätsreinigung

Empfohlene Verdünnungen:

WB 1:1000-1:6000

IP 0.5-4.0 µg für IP und 1:200-1:1000

für WB

IHC 1:20-1:200

IF 1:10-1:100

Anwendungen

Geprüfte Anwendungen:

IF, IHC, IP, WB, ELISA

In Publikationen genannte Anwendungen:

ChIP, CoIP, IF, IHC, WB

Getestete Reaktivität:

Human, Maus, Ratte

Zitierte Arten:

Human, Maus

Hinweis-IHC: Antigenmaskierung mit TE-Puffer pH 9,0 empfohlen. (*) Wahlweise kann die Antigenmaskierung auch mit Citratpuffer pH 6,0 erfolgen.

Positivkontrollen:

WB : HeLa-Zellen, A431-Zellen, HEK-293-Zellen, HepG2-Zellen, humanes Lungengewebe

IP : HeLa-Zellen,

IHC : humanes Mammakarzinomgewebe, humanes Lungenkarzinomgewebe

IF : HepG2-Zellen,

Hintergrundinformationen

TLE3, also named as KIAA1547 and ESG3, belongs to the WD repeat Groucho/TLE family. It is a transcriptional corepressor that binds to a number of transcription factors. It inhibits the transcriptional activation mediated by CTNNB1 and TCF family members in Wnt signaling. The effects of full-length TLE family members may be modulated by association with dominant-negative AES. TLE3 is a member of the transducin-like enhancer of split (TLE) family of proteins that have been implicated in the tumorigenesis and classification of sarcomas. It is a candidate biomarker of response to taxane

Bemerkenswerte Veröffentlichungen

Verfasser	Pubmed ID	Journal	Anwendung
Mohsan Saeed	32997711	PLoS Pathog	WB
Francisco José Ortega	25249007	J Mol Med (Berl)	WB
Ying Ren	31645658	Acta Pharmacol Sin	WB

Lagerung

Lagerungsbedingungen:

Bei -20°C lagern. Nach dem Versand ein Jahr lang stabil

Lagerungspuffer:

PBS mit 0.02% Natriumazid und 50% Glycerin pH 7.3.

Aliquotieren ist nicht notwendig bei -20°C Lagerung

*** 20ul-Größen enthalten 0.1% BSA

For technical support and original validation data for this product please contact:

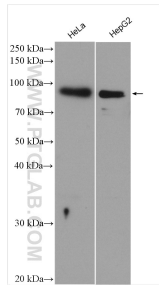
T: 1 (888) 4PTGLAB (1-888-478-4522) (toll free in USA), or 1(312) 455-8498 (outside USA)

E: proteintech@ptglab.com

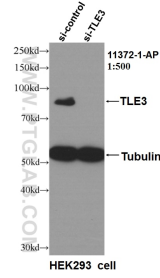
W: ptglab.com

This product is exclusively available under Proteintech Group brand and is not available to purchase from any other manufacturer.

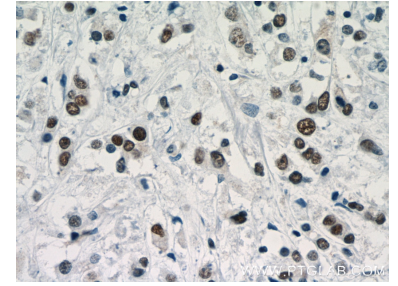
Ausgewählte Validierungsdaten



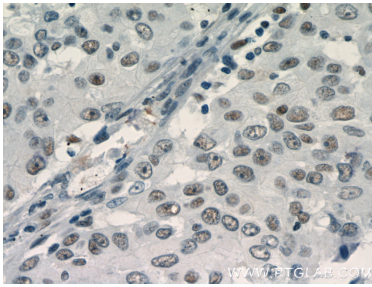
HeLa cells were subjected to SDS PAGE followed by western blot with 11372-1-AP (TLE3 antibody) at dilution of 1:3000 incubated at room temperature for 1.5 hours.



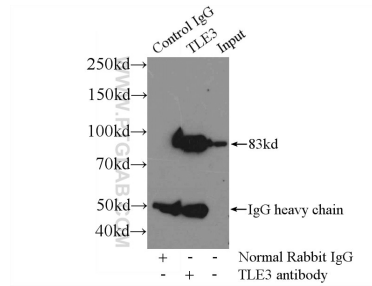
WB result of TLE3 antibody (11372-1-AP, 1:500) with si-Control and si-TLE3 transfected HEK293 cells.



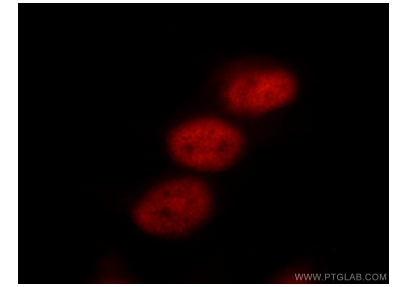
Immunohistochemical analysis of paraffin-embedded human breast cancer slide using 11372-1-AP (TLE3 Antibody) at dilution of 1:50.



Immunohistochemical analysis of paraffin-embedded human lung cancer slide using 11372-1-AP (TLE3 Antibody) at dilution of 1:50.



IP Result of anti-TLE3 (IP:11372-1-AP, 4 μ g; Detection:11372-1-AP 1:300) with HeLa cells lysate 1600 μ g.



Immunofluorescent analysis of HepG2 cells using 11372-1-AP (TLE3 antibody) at dilution of 1:25 and Rhodamine-Goat anti-Rabbit IgG.