

Nur für Forschungszwecke

UBE2D1/2/3/4 Polyklonaler Antikörper

Katalog-Nr.:11373-1-AP



Allgemeine Informationen

Katalog-Nr.: 11373-1-AP	GenBank-Zugangsnummer: BC015997	Reinigungsmethode: Antigen-Affinitätsreinigung
Größe: 150ul, Konzentration: 550 µg/ml von Nanodrop;	GeneID (NCBI): 7321	Empfohlene Verdünnungen: WB 1:2000-1:12000
Wirt: Kaninchen	Vollständiger Name: ubiquitin-conjugating enzyme E2D1 (UBC4/5 homolog, yeast)	IP 0.5-4.0 ug für IP und 1:200-1:1000 für WB
Isotyp: IgG	Berechnete Masse: 17 kDa	IHC 1:20-1:200
Immunogen Katalognummer: AG1932	Beobachtete Masse: 17 kDa	

Anwendungen

Geprüfte Anwendungen:

IHC, IP, WB, ELISA

Getestete Reaktivität:

Human, Maus, Ratte

Hinweis-IHC: Antigendemaskierung mit TE-Puffer pH 9,0 empfohlen. (*) Wahlweise kann die Antigendemaskierung auch mit Citratpuffer pH 6,0 erfolgen.

Positivkontrollen:

WB: HeLa-Zellen, Jurkat-Zellen, Maus-Thymusgewebe, NIH/3T3-Zellen

IP: Jurkat-Zellen,

IHC: humanes Prostatakarzinomgewebe,

Hintergrundinformationen

Ubiquitination is a post-translational modification pathway or is part of the specific protein-degradation pathway by the 26S proteasome. Ubiquitination of a target protein involves multistep enzymatic reaction catalyzed by a cascade of enzymes including Ub-activating enzymes (E1s), Ub-conjugating enzymes (E2s) and Ub ligases (E3s) (PMID: 23542885). UBE2D family, which has 4 members named as UBE2D1/2/3/4, is an E2 ubiquitin-conjugating enzyme family in the ubiquitin-proteasome system. This antibody can recognize all the four members of UBE2D due to the high homology.

Lagerung

Lagerungsbedingungen:

Bei -20°C lagern. Nach dem Versand ein Jahr lang stabil

Lagerungspuffer:

PBS mit 0.02% Natriumazid und 50% Glycerin pH 7.3.

Aliquotieren ist nicht notwendig bei -20°C Lagerung

*** 20ul-Größen enthalten 0.1% BSA

For technical support and original validation data for this product please contact:

T: 1 (888) 4PTGLAB (1-888-478-4522) (toll free in USA), or 1(312) 455-8498 (outside USA)

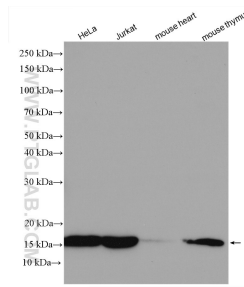
E: proteintech@ptglab.com
W: ptglab.com

This product is exclusively available under Proteintech Group brand and is not available to purchase from any other manufacturer.

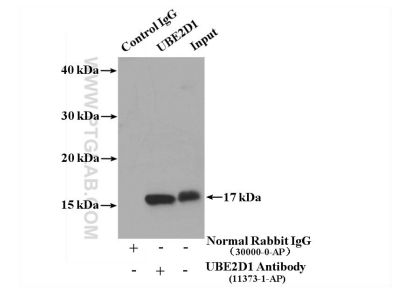
Ausgewählte Validierungsdaten



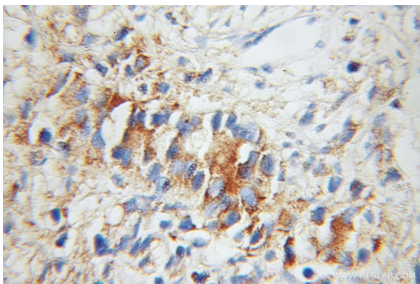
NIH/3T3 cells were subjected to SDS PAGE followed by western blot with 11373-1-AP (UBE2D1-Specific antibody) at dilution of 1:500.



Various lysates were subjected to SDS PAGE followed by western blot with 11373-1-AP (UBE2D1/2/3/4 antibody) at dilution of 1:6000 incubated at room temperature for 1.5 hours.



IP result of anti-UBE2D1-Specific (IP:11373-1-AP, 4ug; Detection:11373-1-AP 1:300) with Jurkat cells lysate 2600 ug.



Immunohistochemical analysis of paraffin-embedded human prostate cancer using 11373-1-AP (UBE2D1-Specific antibody) at dilution of 1:50 (under 10x lens).