

Nur für Forschungszwecke

Septin 2 Polyklonaler Antikörper

Katalog-Nr.:11397-1-AP

Vorgestelltes Produkt

22 Publikationen



Allgemeine Informationen

Katalog-Nr.:
11397-1-AP

Größe:
150ul, Konzentration: 450 µg/ml von
Nanodrop und 293 µg/ml durch die
Bradford-Methode mit BSA als
Standard;

Wirt:
Kaninchen

Isotyp:
IgG

Immunogen Katalognummer:
AG1946

GenBank-Zugangsnummer:
BC014455

GeneID (NCBI):
4735

Vollständiger Name:
septin 2

Berechnete Masse:
41 kDa

Beobachtete Masse:
45 kDa

Reinigungsmethode:

Antigen-Affinitätsreinigung

Empfohlene Verdünnungen:

WB 1:1000-1:4000

IP 0.5-4.0 µg für IP und 1:500-1:2000
für WB

IHC 1:50-1:500

IF 1:50-1:500

Anwendungen

Geprüfte Anwendungen:

FC, IF, IHC, IP, WB, ELISA

In Publikationen genannte Anwendungen:

IF, IP, WB

Getestete Reaktivität:

Human, Maus, Ratte

Zitierte Arten:

Human, Maus, Ratte

Hinweis-IHC: Antigendemaskierung mit TE-Puffer pH 9,0 empfohlen. (*) Wahlweise kann die Antigendemaskierung auch mit Citratpuffer pH 6,0 erfolgen.

Positivkontrollen:

WB: Maushirngewebe, C6-Zellen, HeLa-Zellen, humanes Skelettmuskelgewebe, Jurkat-Zellen, K-562-Zellen, Mausherzgewebe, Rattenhirngewebe

IP: Maushirngewebe,

IHC: humanes Leberkarzinomgewebe, humanes Pankreaskarzinomgewebe

IF: HepG2-Zellen, hTERT-RPE1-Zellen und embryonale Fibroblasten aus der Maus (MEF-Zellen)

Hintergrundinformationen

Septin-2, also named as DIFF6, KIAA0158, NEDD5 and SEPT2, belongs to the septin family. It is a filament-forming cytoskeletal GTPase. SEPT2 is required for normal organization of the actin cytoskeleton. It plays a role in ciliogenesis and collective cell movements. SEPT2 is coordinated expression with SEPT6 and SEPT7. (PMID:21737677)

Bemerkenswerte Veröffentlichungen

Verfasser	Pubmed ID	Journal	Anwendung
Sellin Mikael E ME	21737677	Mol Biol Cell	WB
Larisa Volceanov	25293760	MBio	WB, IF, IP
Wei Zhang	33200802	Mol Med Rep	WB

Lagerung

Lagerungsbedingungen:

Bei -20°C lagern. Nach dem Versand ein Jahr lang stabil

Lagerungspuffer:

PBS mit 0.02% Natriumazid und 50% Glycerin pH 7.3.

Aliquotieren ist nicht notwendig bei -20°C Lagerung

*** 20ul-Größen enthalten 0.1% BSA

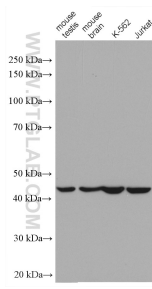
For technical support and original validation data for this product please contact:

T: 1 (888) 4PTGLAB (1-888-478-4522) (toll free in USA), or 1(312) 455-8498 (outside USA)

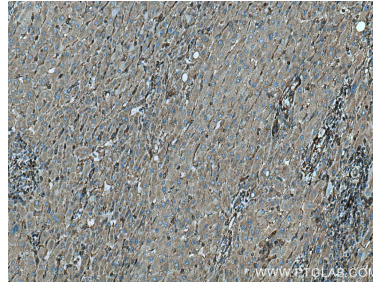
E: proteintech@ptglab.com
W: ptglab.com

This product is exclusively available under Proteintech Group brand and is not available to purchase from any other manufacturer.

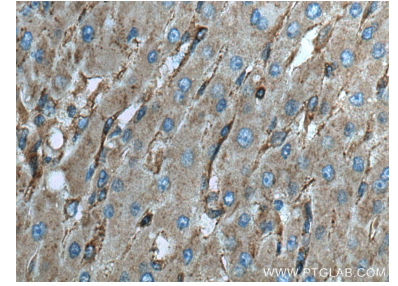
Ausgewählte Validierungsdaten



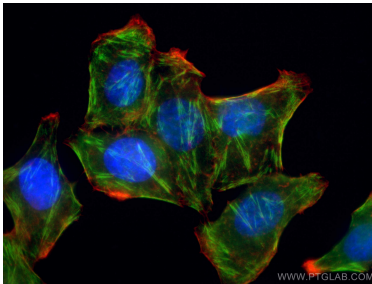
Various lysates were subjected to SDS PAGE followed by western blot with 11397-1-AP (Septin 2 antibody) at dilution of 1:2000 incubated at room temperature for 1.5 hours.



Immunohistochemical analysis of paraffin-embedded human liver cancer tissue slide using 11397-1-AP (Septin 2 antibody) at dilution of 1:200 (under 10x lens). Heat mediated antigen retrieval with Tris-EDTA buffer (pH 9.0).

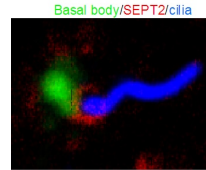


Immunohistochemical analysis of paraffin-embedded human liver cancer tissue slide using 11397-1-AP (Septin 2 antibody) at dilution of 1:200 (under 40x lens). Heat mediated antigen retrieval with Tris-EDTA buffer (pH 9.0).

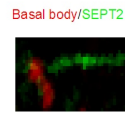


Immunofluorescent analysis of (4% PFA) fixed HepG2 cells using 11397-1-AP (Septin 2 antibody), at dilution of 1:200 and CoraLite@488-Conjugated AffiniPure Goat Anti-Rabbit IgG(H+L).

SEPTIN2 marks the transition zone and cilium

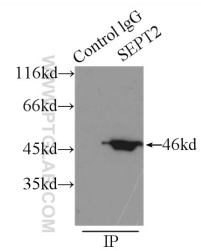


Mouse embryonic fibroblasts

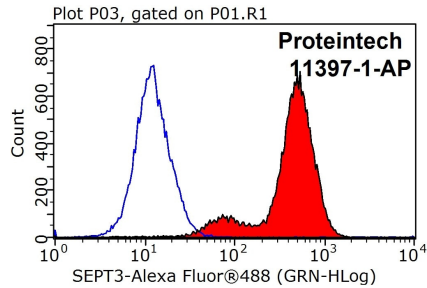


Human hTERT-RPE1 cells

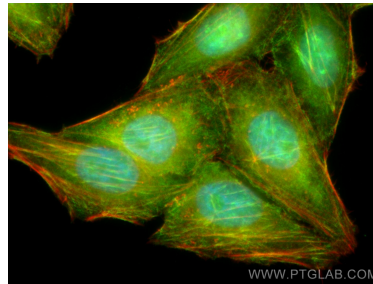
IF result from Dr. Kevin Corbit. Septin 2 (11397-1-AP) marks the transition zone and cilium of Human hTERT-RPE1 cells and Mouse embryonic fibroblasts.



IP Result of anti-Septin 2 (IP:11397-1-AP, 3ug; Detection:11397-1-AP 1:1000) with mouse brain tissue lysate 5000ug.



1X10⁶ MCF-7 cells were stained with 0.2ug Septin 2 antibody (11397-1-AP, red) and control antibody (blue). Fixed with 90% MeOH blocked with 3% BSA (30 min). Alexa Fluor 488-conjugated AffiniPure Goat Anti-Rabbit IgG(H+L) with dilution 1:1000.



Immunofluorescent analysis of (4% PFA) fixed HepG2 cells using Septin 2 antibody (11397-1-AP) at dilution of 1:400 and CoraLite@488-Conjugated AffiniPure Goat Anti-Rabbit IgG(H+L), CL594-Phalloidin (red).