

Allgemeine Informationen

Katalog-Nr.: 11402-1-AP	GenBank-Zugangsnummer: BC014224	Reinigungsmethode: Antigen-Affinitätsreinigung
Größe: 150ul , Konzentration: 500 µg/ml von Nanodrop;	GeneID (NCBI): 1915	Empfohlene Verdünnungen: WB 1:2000-1:12000 IHC 1:50-1:500 IF 1:200-1:800
Wirt: Kaninchen	Vollständiger Name: eukaryotic translation elongation factor 1 alpha 1	
Isotyp: IgG	Berechnete Masse: 462 aa, 50 kDa	
Immunogen Katalognummer: AG1938	Beobachtete Masse: 50 kDa	

Anwendungen

Geprüfte Anwendungen:

IF, IHC, WB, ELISA

In Publikationen genannte Anwendungen:

CoIP, IF, IHC, IP, RIP, WB

Getestete Reaktivität:

Human, Maus, Ratte

Zitierte Arten:

Human, Maus

Hinweis-IHC: Antigenmaskierung mit TE-Puffer pH 9,0 empfohlen. (*) Wahlweise kann die Antigenmaskierung auch mit Citratpuffer pH 6,0 erfolgen.

Positivkontrollen:

WB: HEK-293-Zellen, C2C12-Zellen, HeLa-Zellen, HepG2-Zellen, humanes Hirngewebe, Jurkat-Zellen, Maus-Eierstockgewebe, Mausherzgewebe, Maushirngewebe, Mauslebergewebe, Maus-Pankreasgewebe, Maus-Skelettmuskelgewebe, MCF-7-Zellen, Neuro-2a-Zellen, Rattenhirngewebe, SH-SY5Y-Zellen

IHC: Maushirngewebe, humanes Pankreaskarzinomgewebe

IF: HepG2-Zellen, HeLa-Zellen

Hintergrundinformationen

EEF1A1, also named as EEF1A, EF1A and LENG7, belongs to the GTP-binding elongation factor family. This protein promotes the GTP-dependent binding of aminoacyl-tRNA to the A-site of ribosomes during protein biosynthesis. It is a typical housekeeping gene product required for the maintenance of cell growth and/or survival. In addition, EEF1A1 protects the aminoester bond against hydrolysis until a correct match between the codon on mRNA and the anti-codon on tRNA can be achieved. This antibody is a rabbit polyclonal antibody raised against residues near the C terminus of human EEF1A1.

Bemerkenswerte Veröffentlichungen

Verfasser	Pubmed ID	Journal	Anwendung
Cheng-Yu Lin	30224719	Sci Rep	WB
Chunxian Zeng	31561740	RNA Biol	WB
Daniel Arango	30449621	Cell	WB

Lagerung

Lagerungsbedingungen:

Bei -20°C lagern. Nach dem Versand ein Jahr lang stabil

Lagerungspuffer:

PBS mit 0.02% Natriumazid und 50% Glycerin pH 7.3.

Aliquotieren ist nicht notwendig bei -20°C Lagerung

***** 20ul-Größen enthalten 0.1% BSA**

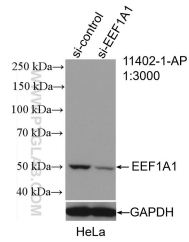
For technical support and original validation data for this product please contact:

T: 1 (888) 4PTGLAB (1-888-478-4522) (toll free in USA), or 1(312) 455-8498 (outside USA)

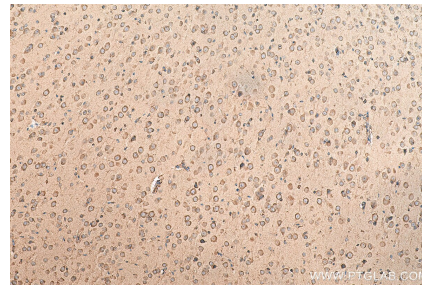
E: proteintech@ptglab.com
W: ptglab.com

This product is exclusively available under Proteintech Group brand and is not available to purchase from any other manufacturer.

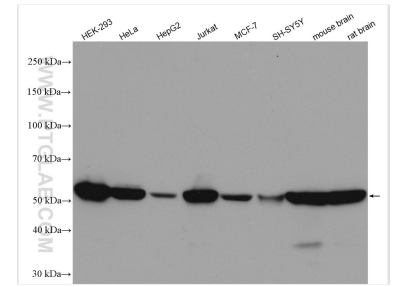
Ausgewählte Validierungsdaten



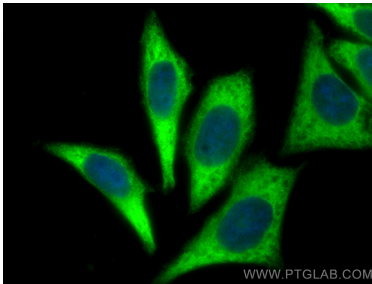
WB result of EEF1A1 antibody (11402-1-AP; 1:3000; incubated at room temperature for 1.5 hours) with sh-Control and sh-EEF1A1 transfected HeLa cells.



Immunohistochemical analysis of paraffin-embedded mouse brain tissue slide using 11402-1-AP (EEF1A1 antibody) at dilution of 1:200 (under 10x lens). Heat mediated antigen retrieval with Tris-EDTA buffer (pH 9.0).



Various lysates were subjected to SDS PAGE followed by western blot with 11402-1-AP (EEF1A1 antibody) at dilution of 1:6000 incubated at room temperature for 1.5 hours.



Immunofluorescent analysis of (-20°C Ethanol) fixed HepG2 cells using EEF1A1 antibody (11402-1-AP) at dilution of 1:400 and CoraLite®488-Conjugated AffiniPure Goat Anti-Rabbit IgG(H+L).