

Nur für Forschungszwecke

HSP90AB1 Polyklonaler Antikörper

Katalog-Nr.:11405-1-AP

Vorgestelltes Produkt

23 Publikationen



Allgemeine Informationen

Katalog-Nr.: 11405-1-AP	GenBank-Zugangsnummer: BC014485	Reinigungsmethode: Antigen-Affinitätsreinigung
Größe: 150ul , Konzentration: 500 µg/ml von Nanodrop;	GeneID (NCBI): 3326	Empfohlene Verdünnungen: WB 1:2000-1:10000 IP 0.5-4.0 ug für IP und 1:500-1:1000 für WB
Wirt: Kaninchen	Vollständiger Name: heat shock protein 90kDa alpha (cytosolic), class B member 1	IHC 1:250-1:1000 IF 1:10-1:100
Isotyp: IgG	Berechnete Masse: 723 aa, 83 kDa	
Immunogen Katalognummer: AG1947	Beobachtete Masse: 83-90 kDa	

Anwendungen

Geprüfte Anwendungen:
FC, IF, IHC, IP, WB, ELISA

In Publikationen genannte Anwendungen:
CoIP, IF, IHC, IP, WB

Getestete Reaktivität:
Human, Maus, Ratte

Zitierte Arten:
Hausschwein, Huhn, Human, Maus, Ratte

Hinweis-IHC: Antigendemaskierung mit TE-Puffer pH 9,0 empfohlen. (*) Wahlweise kann die Antigendemaskierung auch mit Citratpuffer pH 6,0 erfolgen.

Positivkontrollen:

WB: PC-3-Zellen, HEK-293-Zellen, HeLa-Zellen, Jurkat-Zellen, Mausherzgewebe, Maushirngewebe, Maus-Thymusgewebe, MCF-7-Zellen, Rattenherzgewebe, Rattenhirngewebe, Ratten-Thymusgewebe

IP: NIH/3T3-Zellen,

IHC: humanes Pankreaskarzinomgewebe, humanes Mammakarzinomgewebe

IF: HepG2-Zellen,

Hintergrundinformationen

HSP90AB1, also known as HSP90 beta, is a member of HSP90 family which includes cytosolic HSP90 alpha (HSP90AA1) and HSP90 beta, endoplasmic reticulum related GRP74, mitochondrial TRAP1. HSP90 proteins play a versatile role in cell regulation, forming complexes with a large number of cellular kinases, transcription factors, and other molecules. Upregulation of HSP90AB1 has been found in various cancers. This antibody may cross-react with HSP90AA1 due to the high homology between them.

Bemerkenswerte Veröffentlichungen

Verfasser	Pubmed ID	Journal	Anwendung
Yunxia Dong	34508810	Pharmacol Res	WB
Thomas Labadie	33075107	PLoS Pathog	IF
Shaojun Zhang	34737357	Cell Res	WB,IP

Lagerung

Lagerungsbedingungen:

Bei -20°C lagern. Nach dem Versand ein Jahr lang stabil

Lagerungspuffer:

PBS mit 0.02% Natriumazid und 50% Glycerin pH 7.3.

Aliquotieren ist nicht notwendig bei -20°C Lagerung

*** 20ul-Größen enthalten 0.1% BSA

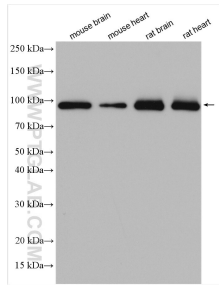
For technical support and original validation data for this product please contact:

T: 1 (888) 4PTGLAB (1-888-478-4522) (toll free in USA), or 1(312) 455-8498 (outside USA)

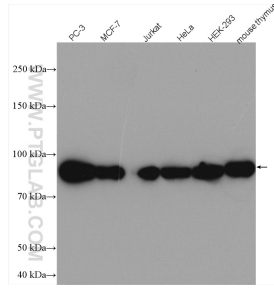
E: proteintech@ptglab.com
W: ptglab.com

This product is exclusively available under Proteintech Group brand and is not available to purchase from any other manufacturer.

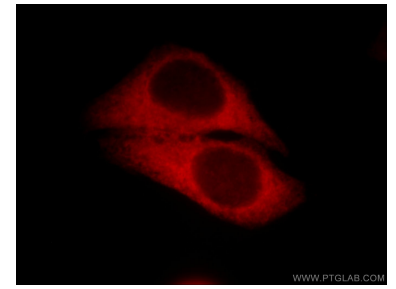
Ausgewählte Validierungsdaten



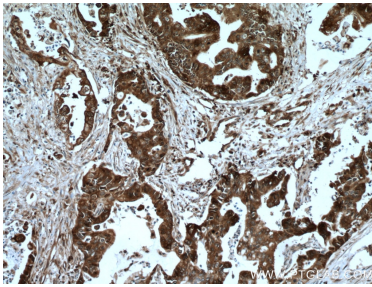
Various lysates were subjected to SDS PAGE followed by western blot with 11405-1-AP (HSP90AB1 antibody) at dilution of 1:2000 incubated at room temperature for 1.5 hours.



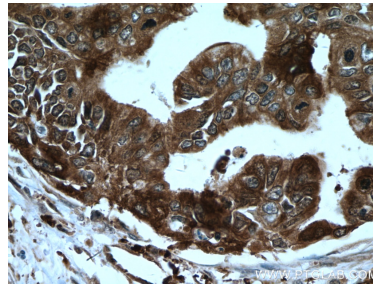
Various lysates were subjected to SDS PAGE followed by western blot with 11405-1-AP (HSP90AB1 antibody) at dilution of 1:5000 incubated at room temperature for 1.5 hours.



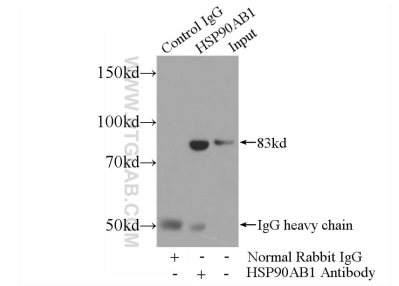
Immunofluorescent analysis of HepG2 cells, using HSP90AB1 antibody 11405-1-AP at 1:25 dilution and Rhodamine-labeled goat anti-rabbit IgG (red).



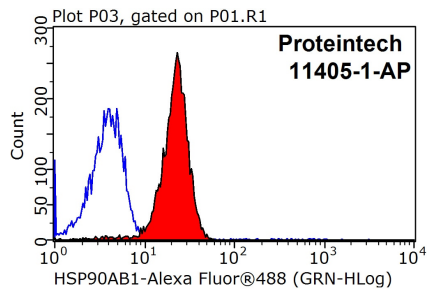
Immunohistochemical analysis of paraffin-embedded human pancreas cancer tissue slide using 11405-1-AP (HSP90AB1 antibody) at dilution of 1:500 (under 10x lens). Heat mediated antigen retrieval with Tris-EDTA buffer (pH 9.0).



Immunohistochemical analysis of paraffin-embedded human pancreas cancer tissue slide using 11405-1-AP (HSP90AB1 antibody) at dilution of 1:500 (under 40x lens). Heat mediated antigen retrieval with Tris-EDTA buffer (pH 9.0).



IP Result of anti-HSP90AB1 (IP:11405-1-AP, 4ug; Detection:11405-1-AP 1:700) with NIH/3T3 cells lysate 1200ug.



1X10⁶ HeLa cells were stained with 0.2ug HSP90AB1 antibody (11405-1-AP, red) and control antibody (blue). Fixed with 90% MeOH blocked with 3% BSA (30 min). Alexa Fluor 488-conjugated AffiniPure Goat Anti-Rabbit IgG(H+L) with dilution 1:1500.