

Nur für Forschungszwecke

# CRBN Polyklonaler Antikörper

Katalog-Nr.: 11435-1-AP

Vorgestelltes Produkt

20 Publikationen



## Allgemeine Informationen

|   |  |  |
|---|--|--|
| <b>Katalog-Nr.:</b><br>11435-1-AP   | <b>GenBank-Zugangsnummer:</b><br>BC017419  | <b>Reinigungsmethode:</b><br>Antigen-Affinitätsreinigung                               |
| <b>Größe:</b><br>150ul, Konzentration: 173 µg/ml<br>durch die Bradford-Methode mit BSA<br>als Standard; | <b>GeneID (NCBI):</b><br>51185             | <b>Empfohlene Verdünnungen:</b><br>WB 1:500-1:1000<br>IHC 1:100-1:400<br>IF 1:50-1:500 |
| <b>Wirt:</b><br>Kaninchen   | <b>Vollständiger Name:</b><br>cereblon     |  |
| <b>Isotyp:</b><br>IgG   | <b>Berechnete Masse:</b><br>442 aa, 51 kDa |  |
| <b>Immunogen Katalognummer:</b><br>AG1951   | <b>Beobachtete Masse:</b><br>51-55 kDa     |  |

## Anwendungen

|   |  |
|---|--|
| <b>Geprüfte Anwendungen:</b><br>IF, IHC, WB, ELISA  | <b>Positivkontrollen:</b><br>WB: Mausherzgewebe, A375-Zellen, COLO 320-Zellen,<br>humanes Herzgewebe, humanes Hirngewebe,<br>Mauslebergewebe |
| <b>In Publikationen genannte Anwendungen:</b><br>IHC, IP, WB  | <b>IHC:</b> humanes Zervixkarzinomgewebe,  |
| <b>Getestete Reaktivität:</b><br>Human, Maus, Ratte   | <b>IF:</b> COLO 320-Zellen, A375-Zellen  |
| <b>Zitierte Arten:</b><br>Human, Maus   |  |
| <b>Hinweis-IHC: Antigendemaskierung mit TE-Puffer pH 9,0 empfohlen. (*) Wahlweise kann die Antigendemaskierung auch mit Citratpuffer pH 6,0 erfolgen.</b> |  |

## Hintergrundinformationen

CRBN plays an important role in assembly and surface expression of functional BK(Ca) channels. The mutation of human cereblon gene (CRBN) is related with mild mental retardation, and causes ARNSID (nonsyndromal intellectual disability) by disturbing the developmental regulation of BK(Ca) in brain regions that are critical for memory and learning. CRBN is also identified as important thalidomide-binding protein for limb outgrowth in zebrafish and chicks. It can be detected a band above 51 kDa (maybe 55 kDa) in HT22 cells (PMID: 21232561).

## Bemerkenswerte Veröffentlichungen

| Verfasser                | Pubmed ID | Journal        | Anwendung |
|--------------------------|-----------|----------------|-----------|
| Greenberg Alexandra J AJ | 23992230  | Eur J Haematol | WB        |
| Chiara Maniaci           | 29018234  | Nat Commun     | WB        |
| Gerard L Brien           | 30431433  | Elife          | WB        |

## Lagerung

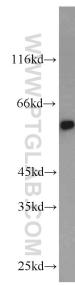
**Lagerungsbedingungen:**  
Bei -20°C lagern. Nach dem Versand ein Jahr lang stabil  
**Lagerungspuffer:**  
PBS mit 0.02% Natriumazid und 50% Glycerin pH 7.3.  
Aliquotieren ist nicht notwendig bei -20°C Lagerung

\*\*\* 20ul-Größen enthalten 0.1% BSA

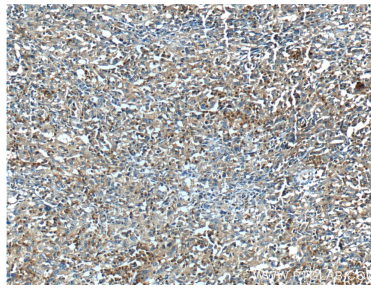
For technical support and original validation data for this product please contact:  
T: 1 (888) 4PTGLAB (1-888-478-4522) (toll free in USA), or 1(312) 455-8498 (outside USA)  
E: proteintech@ptglab.com  
W: ptglab.com

This product is exclusively available under Proteintech Group brand and is not available to purchase from any other manufacturer.

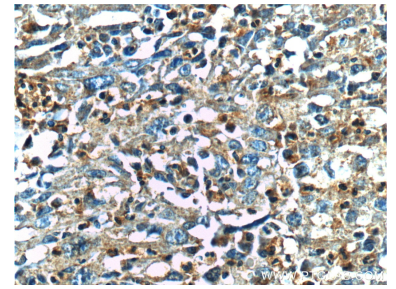
## Ausgewählte Validierungsdaten



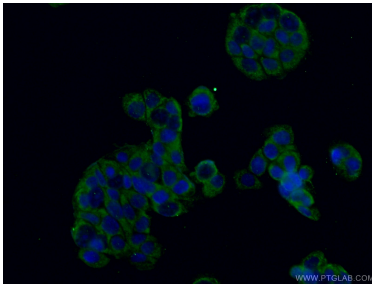
mouse heart tissue were subjected to SDS PAGE followed by western blot with 11435-1-AP (CRBN antibody) at dilution of 1:1000 incubated at room temperature for 1.5 hours.



Immunohistochemical analysis of paraffin-embedded human cervical cancer tissue slide using 11435-1-AP (CRBN Antibody) at dilution of 1:200 (under 10x lens).



Immunohistochemical analysis of paraffin-embedded human cervical cancer tissue slide using 11435-1-AP (CRBN Antibody) at dilution of 1:200 (under 40x lens).



Immunofluorescent analysis of (-20°C Ethanol) fixed COLO 320 cells using 11435-1-AP (CRBN antibody) at dilution of 1:50 and CoraLite488-Conjugated AffiniPure Goat Anti-Rabbit IgG(H+L).