

Allgemeine Informationen

Katalog-Nr.:
11438-1-AP

Größe:
150ul , Konzentration: 200 µg/ml von
Nanodrop und 140 µg/ml durch die
Bradford-Methode mit BSA als
Standard;

Wirt:
Kaninchen

Isotyp:
IgG

Immunogen Katalognummer:
AG1906

GenBank-Zugangsnummer:
BC014074

GeneID (NCBI):
23532

Vollständiger Name:
preferentially expressed antigen in
melanoma

Berechnete Masse:
509 aa, 58 kDa

Beobachtete Masse:
58 kDa

Reinigungsmethode:

Antigen-Affinitätsreinigung

Empfohlene Verdünnungen:

WB 1:200-1:1000
IP 0.5-4.0 ug für IP und 1:200-1:1000
für WB

Anwendungen

Geprüfte Anwendungen:

IP, WB,ELISA

Getestete Reaktivität:

Human

Positivkontrollen:

WB : A549-Zellen, HepG2-Zellen

IP : A549-Zellen,

Hintergrundinformationen

The PRAME (preferentially expressed antigen of melanoma) gene was previously shown to be overexpressed in ovarian/primary peritoneal serous carcinoma compared with malignant mesothelioma using gene expression arrays. It is considered a melanocyte differentiation antigen which is overexpressed in both solid and hematologic tumors. In normal tissue, a very low level of PRAME expression is found in normal testis, adrenals, ovary and endometrium. A high level of PRAME expression has been reported for several solid tumors, including ovarian cancer, breast cancer, lung cancer and melanomas, medulloblastoma, sarcomas, head and neck cancers, neuroblastoma, renal cancer, and Wilms'tumor. As a nuclear transcriptional repressor protein, PRAME binds to retinoic acid receptor α , thereby inhibiting retinoic acid induced differentiation, growth arrest, and apoptosis.

Lagerung

Lagerungsbedingungen:

Bei -20°C lagern. Nach dem Versand ein Jahr lang stabil

Lagerungspuffer:

PBS mit 0.02% Natriumazid und 50% Glycerin pH 7.3.

Aliquotieren ist nicht notwendig bei -20°C Lagerung

***** 20ul-Größen enthalten 0.1% BSA**

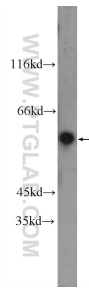
For technical support and original validation data for this product please contact:

T: 1 (888) 4PTGLAB (1-888-478-4522) (toll free
in USA), or 1(312) 455-8498 (outside USA)

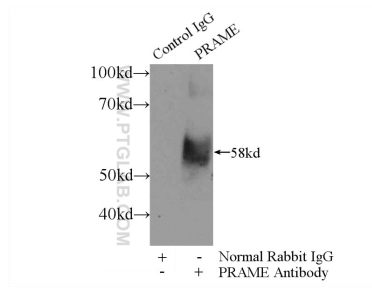
E: proteintech@ptglab.com
W: ptglab.com

This product is exclusively available under Proteintech Group brand and is not available to purchase from any other manufacturer.

Ausgewählte Validierungsdaten



A549 cells were subjected to SDS PAGE followed by western blot with 11438-1-AP (PRAME Antibody) at dilution of 1:300 incubated at room temperature for 1.5 hours.



IP Result of anti-PRAME (IP:11438-1-AP, 3ug; Detection:11438-1-AP 1:300) with A549 cells lysate 2400ug.