

Nur für Forschungszwecke

SKIV2L Polyklonaler Antikörper

Katalog-Nr.: 11462-1-AP

Vorgestelltes Produkt

11 Publikationen



Allgemeine Informationen

Katalog-Nr.:

11462-1-AP

Größe:

150ul, Konzentration: 850 µg/ml von Nanodrop;

Wirt:

Kaninchen

Isotyp:

IgG

Immunogen Katalognummer:

AG1977

GenBank-Zugangsnummer:

BC015758

GeneID (NCBI):

6499

Vollständiger Name:

superkiller viralicidic activity 2-like (S. cerevisiae)

Berechnete Masse:

1246 aa, 138 kDa

Beobachtete Masse:

138 kDa

Reinigungsmethode:

Antigen-Affinitätsreinigung

Empfohlene Verdünnungen:

WB 1:1000-1:8000

IP 0.5-4.0 µg für IP und 1:500-1:1000 für WB

Anwendungen

Geprüfte Anwendungen:

IP, WB, ELISA

In Publikationen genannte Anwendungen:

IF, IHC, WB

Getestete Reaktivität:

Human

Zitierte Arten:

Human

Positivkontrollen:

WB: HEK-293-Zellen, COLO 320-Zellen, HepG2-Zellen, humanes Nierengewebe, Jurkat-Zellen

IP: HepG2-Zellen,

Hintergrundinformationen

The Ski complex is a multiprotein complex required for exosome-mediated RNA surveillance, including the regulation of normal mRNA and the decay of nonfunctional mRNA. Component of the Ski complex which is thought to be involved in exosome-mediated RNA decay and associates with transcriptionally active genes in a manner dependent on PAF1 complex (PAF1C) [PMID:22444670]. SKIV2L, one component of the Ski complex, acts as an RNA helicase with a role in exosome recruitment or activation. It is involved in the degradation of RNAs by the exosome and may have a role in autophagy [PMID:11719186].

Bemerkenswerte Veröffentlichungen

Verfasser	Pubmed ID	Journal	Anwendung
Katarzyna Kalisiak	27679475	Nucleic Acids Res	WB
Katarzyna Kalisiak	28204585	Nucleic Acids Res	WB
Stuart Weston	33184176	Proc Natl Acad Sci U S A	WB

Lagerung

Lagerungsbedingungen:

Bei -20°C lagern. Nach dem Versand ein Jahr lang stabil

Lagerungspuffer:

PBS mit 0.02% Natriumazid und 50% Glycerin pH 7.3.

Aliquotieren ist nicht notwendig bei -20°C Lagerung

*** 20ul-Größen enthalten 0.1% BSA

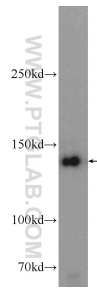
For technical support and original validation data for this product please contact:

T: 1 (888) 4PTGLAB (1-888-478-4522) (toll free in USA), or 1(312) 455-8498 (outside USA)

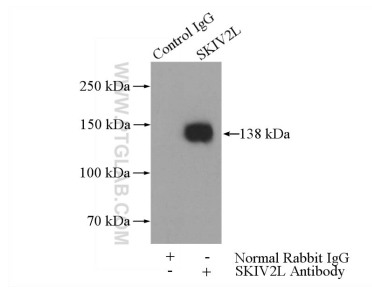
E: proteintech@ptglab.com
W: ptglab.com

This product is exclusively available under Proteintech Group brand and is not available to purchase from any other manufacturer.

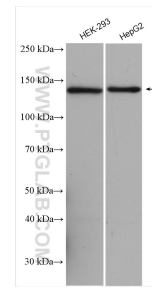
Ausgewählte Validierungsdaten



HEK-293 cells were subjected to SDS PAGE followed by western blot with 11462-1-AP (SKIV2L Antibody) at dilution of 1:600 incubated at room temperature for 1.5 hours.



IP Result of anti-SKIV2L (IP:11462-1-AP, 4ug; Detection:11462-1-AP 1:600) with HepG2 cells lysate 3200ug.



Various lysates were subjected to SDS PAGE followed by western blot with 11462-1-AP (SKIV2L antibody) at dilution of 1:4000 incubated at room temperature for 1.5 hours.