

Nur für Forschungszwecke

# Calpain 2 Polyklonaler Antikörper

Katalog-Nr.: 11472-1-AP

Vorgestelltes Produkt

11 Publikationen



## Allgemeine Informationen

Katalog-Nr.:  
11472-1-AP

Größe:  
150ul, Konzentration: 450 µg/ml von  
Nanodrop und 300 µg/ml durch die  
Bradford-Methode mit BSA als  
Standard;

Wirt:  
Kaninchen

Isotyp:  
IgG

Immunogen Katalognummer:  
AG2029

GenBank-Zugangsnummer:  
BC021303

GeneID (NCBI):  
824

Vollständiger Name:  
calpain 2, (m/II) large subunit

Berechnete Masse:  
700 aa, 80 kDa

Beobachtete Masse:  
72-80 kDa

Reinigungsmethode:

Antigen-Affinitätsreinigung

Empfohlene Verdünnungen:

WB 1:2000-1:10000

IHC 1:50-1:500

IF 1:10-1:100

## Anwendungen

Geprüfte Anwendungen:

IF, IHC, IP, WB, ELISA

In Publikationen genannte Anwendungen:

IF, IHC, WB

Getestete Reaktivität:

Human, Maus, Ratte

Zitierte Arten:

Human, Maus, Ratte

**Hinweis-IHC: Antigendemaskierung mit TE-Puffer pH 9,0 empfohlen. (\*) Wahlweise kann die Antigendemaskierung auch mit Citratpuffer pH 6,0 erfolgen.**

Positivkontrollen:

WB: A549-Zellen, C2C12-Zellen, HeLa-Zellen, humanes Plazenta-Gewebe, K-562-Zellen, Maushirngewebe, MDA-MB-231-Zellen, PC-3-Zellen, Rattenhirngewebe, Y79-Zellen

IHC: humanes Nierengewebe, humanes Kolonkarzinomgewebe, humanes Leberkarzinomgewebe

IF: HepG2-Zellen, MDA-MB-231-Zellen

## Hintergrundinformationen

Calpain 2 (Calpain-2 catalytic subunit) is also named as CANPL2, CANPml, mCANP, FLJ39928 and belongs to the peptidase C2 family. N-terminal sequencing of CAPN2 purified from human liver indicates that the N-terminal methionine is removed, resulting in a mature 699-amino acid subunit with a calculated molecular mass of 79.9 kD (PMID:2852952). It is a calcium-regulated non-lysosomal thiol-protease which catalyzes limited proteolysis of substrates involved in cytoskeletal remodelling and signal transduction. It has 2 isoforms produced by alternative splicing with the molecular weight of 80 kDa and 71 kDa.

## Bemerkenswerte Veröffentlichungen

Verfasser	Pubmed ID	Journal	Anwendung
Shuchao Wang	30240910	Ann Anat	WB, IF
Wen Tian	35598715	Pharmacol Res	IF
Takaya Kotani	33991444	Physiol Rep	WB

## Lagerung

Lagerungsbedingungen:

Bei -20°C lagern. Nach dem Versand ein Jahr lang stabil

Lagerungspuffer:

PBS mit 0.02% Natriumazid und 50% Glycerin pH 7.3.

Aliquotieren ist nicht notwendig bei -20°C Lagerung

\*\*\* 20ul-Größen enthalten 0.1% BSA

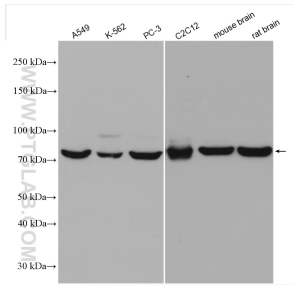
For technical support and original validation data for this product please contact:

T: 1 (888) 4PTGLAB (1-888-478-4522) (toll free in USA), or 1(312) 455-8498 (outside USA)

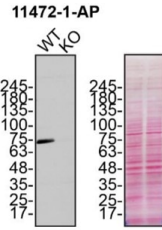
E: proteintech@ptglab.com  
W: ptglab.com

This product is exclusively available under Proteintech Group brand and is not available to purchase from any other manufacturer.

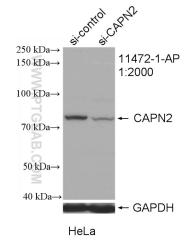
## Ausgewählte Validierungsdaten



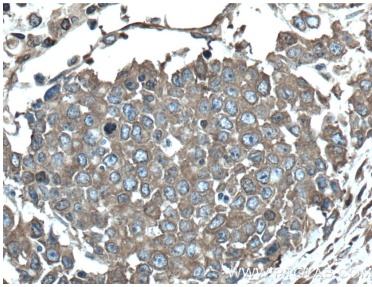
Various lysates were subjected to SDS PAGE followed by western blot with 11472-1-AP (Calpain 2 antibody) at dilution of 1:5000 incubated at room temperature for 1.5 hours.



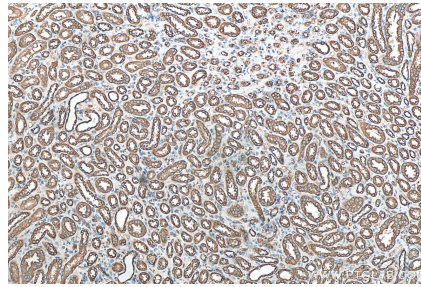
MDA-MB-231 (WT and CAPN2 KO) lysates prepared with RIPA buffer, 50 µg protein loaded. 11472-1-AP incubated at 1:500 at 4°C overnight in 5% BSA in TBST. Ponceau stained transfers shown on right. Data provided by YCharOS, an open science company with a mission to validate commercial antibodies to improve scientific reproducibility and transparency.



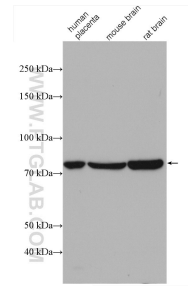
WB result of Calpain 2 antibody (11472-1-AP; 1:2000; incubated at room temperature for 1.5 hours) with sh-Control and sh-Calpain 2 transfected HeLa cells.



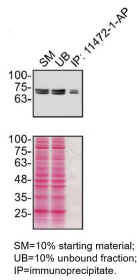
Immunohistochemical analysis of paraffin-embedded human colon cancer tissue slide using 11472-1-AP (Calpain 2 antibody) at dilution of 1:200 (under 40x lens). Heat mediated antigen retrieval with Tris-EDTA buffer (pH 9.0).



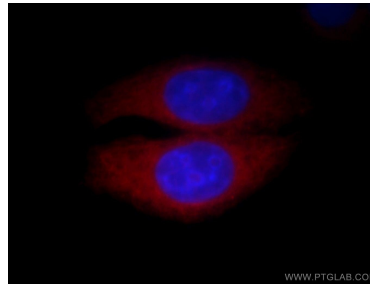
Immunohistochemical analysis of paraffin-embedded human kidney tissue slide using 11472-1-AP (Calpain 2 antibody) at dilution of 1:200 (under 10x lens). Heat mediated antigen retrieval with Tris-EDTA buffer (pH 9.0).



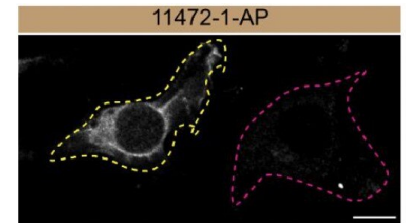
Various lysates were subjected to SDS PAGE followed by western blot with 11472-1-AP (Calpain 2 antibody) at dilution of 1:1500 incubated at room temperature for 1.5 hours.



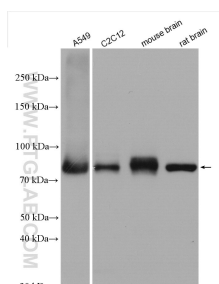
MDA-MB-231 lysates prepared and IP of CAPN2 performed using 1.0 µg of 11472-1-AP coupled to protein A- Sepharose beads. Data provided by YCharOS, an open science company with a mission to validate commercial antibodies to improve scientific reproducibility and transparency.



Immunofluorescent analysis of HepG2 cells, using CAPN2 antibody 11472-1-AP at 1:25 dilution and Rhodamine-labeled goat anti-rabbit IgG (red). Blue pseudocolor = DAPI (fluorescent DNA dye).



MDA-MB-231 WT cells (yellow outline) and SYT1 KO cells (red outline) labelled with a green or a red fluorescence dye, respectively. Cells fixed with 4% PFA and stained with 11472-1-AP at 1:300, plus DAPI. Bars = 10 µm. Data provided by YCharOS, an open science company with a mission to validate commercial antibodies to improve scientific reproducibility and transparency.



Various lysates were subjected to SDS PAGE followed by western blot with 11472-1-AP (Calpain 2 antibody) at dilution of 1:2000 incubated at room temperature for 1.5 hours.