

Nur für Forschungszwecke

MTAP Polyklonaler Antikörper

Katalog-Nr.: 11475-1-AP

Vorgestelltes Produkt

25 Publikationen



Allgemeine Informationen

Katalog-Nr.: 11475-1-AP	GenBank-Zugangsnummer: BC018625	Reinigungsmethode: Antigen-Affinitätsreinigung
Größe: 150ul, Konzentration: 360 µg/ml von Nanodrop und 367 µg/ml durch die Bradford-Methode mit BSA als Standard;	GeneID (NCBI): 4507	Empfohlene Verdünnungen: WB 1:2000-1:12000 IHC 1:20-1:200 IF 1:50-1:500
Wirt: Kaninchen	Vollständiger Name: methylthioadenosine phosphorylase	
Isotyp: IgG	Berechnete Masse: 283 aa, 31 kDa	
Immunogen Katalognummer: AG2051	Beobachtete Masse: 31 kDa	

Anwendungen

Geprüfte Anwendungen: IF, IHC, WB, ELISA	Positivkontrollen: WB : HEK-293-Zellen, C6-Zellen, HeLa-Zellen, HT-29-Zellen, humanes Herzgewebe, Mausherzgewebe, NIH/3T3-Zellen, Raji-Zellen
In Publikationen genannte Anwendungen: IHC, WB	IHC : humanes Kolonkarzinomgewebe,
Getestete Reaktivität: Human, Maus, Ratte	IF : NIH/3T3-Zellen,
Zitierte Arten: Human, Ratte	
Hinweis-IHC: Antigenmaskierung mit TE-Puffer pH 9,0 empfohlen. (*) Wahlweise kann die Antigenmaskierung auch mit Citratpuffer pH 6,0 erfolgen.	

Hintergrundinformationen

MTAP is a 5-deoxy-5-methylthioadenosine (MTA) phosphorylase, converting MTA to salvageable intermediates including adenine and 5-methylthioribose-1-phosphate. MTAP is abundant in normal cells, but it is frequently found to be deleted in a variety of cancers. Its deficiency is common in cancer cell lines as well as in primary leukemia, lung cancer, melanoma, bladder cancer, gliomas and breast cancer.

Bemerkenswerte Veröffentlichungen

Verfasser	Pubmed ID	Journal	Anwendung
Lusia Sepiashvili	25271301	Mol Cell Proteomics	IHC
Chidlow Glyn G	24069379	PLoS One	WB, IHC
Jianying Guo	31477750	Sci Rep	WB

Lagerung

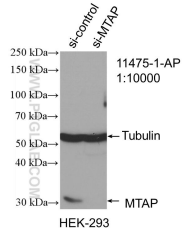
Lagerungsbedingungen:
Bei -20°C lagern. Nach dem Versand ein Jahr lang stabil
Lagerungspuffer:
PBS mit 0.02% Natriumazid und 50% Glycerin pH 7.3.
Aliquotieren ist nicht notwendig bei -20°C Lagerung

*** 20ul-Größen enthalten 0.1% BSA

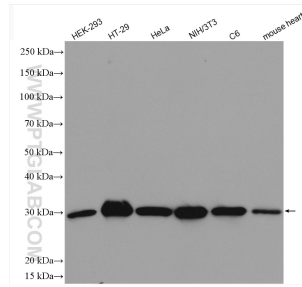
For technical support and original validation data for this product please contact:
T: 1 (888) 4PTGLAB (1-888-478-4522) (toll free in USA), or 1(312) 455-8498 (outside USA)
E: proteintech@ptglab.com
W: ptglab.com

This product is exclusively available under Proteintech Group brand and is not available to purchase from any other manufacturer.

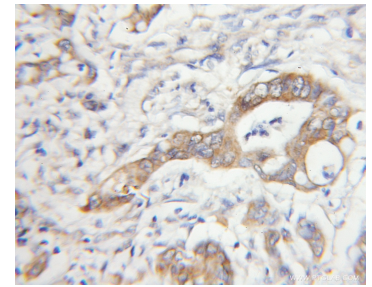
Ausgewählte Validierungsdaten



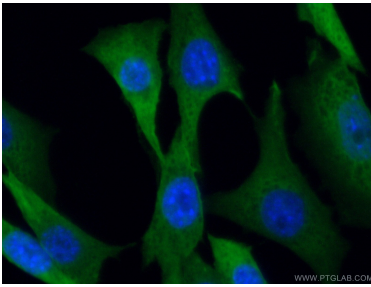
WB result of MTAP antibody (11475-1-AP; 1:10000; incubated at room temperature for 1.5 hours) with sh-Control and sh-MTAP transfected HEK-293 cells.



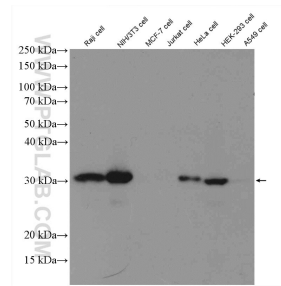
Various lysates were subjected to SDS PAGE followed by western blot with 11475-1-AP (MTAP antibody) at dilution of 1:6000 incubated at room temperature for 1.5 hours.



Immunohistochemical analysis of paraffin-embedded human colon cancer using 11475-1-AP (MTAP antibody) at dilution of 1:50 (under 10x lens).



Immunofluorescent analysis of (4% PFA) fixed NIH/3T3 cells using 11475-1-AP (MTAP antibody) at dilution of 1:50 and Alexa Fluor 488-conjugated AffiniPure Goat Anti-Rabbit IgG(H+L).



Various lysates from MTAP-expressing cells (Raji, NIH3T3, HeLa, and HEK293) and MTAP deficient cells (MCF7 and A549) were subjected to SDS PAGE followed by western blot with 11475-1-AP (MTAP antibody) at dilution of 1:2000 incubated at room temperature for 1.5 hours.