

Nur für Forschungszwecke

GPSM1 Polyklonaler Antikörper

Katalog-Nr.:11483-1-AP

Vorgestelltes Produkt

2 Publikationen



Allgemeine Informationen

Katalog-Nr.:
11483-1-AP

Größe:
150ul, Konzentration: 450 µg/ml von
Nanodrop und 260 µg/ml durch die
Bradford-Methode mit BSA als
Standard;

Wirt:
Kaninchen

Isotyp:
IgG

Immunogen Katalognummer:
AG2018

GenBank-Zugangsnummer:
BC017353

GeneID (NCBI):
26086

Vollständiger Name:
G-protein signaling modulator 1
(AGS3-like, C. elegans)

Berechnete Masse:
652 aa, 72 kDa

Beobachtete Masse:
72 kDa

Reinigungsmethode:

Antigen-Affinitätsreinigung

Empfohlene Verdünnungen:

WB 1:500-1:1000

IHC 1:50-1:500

IF 1:10-1:100

Anwendungen

Geprüfte Anwendungen:

IF, IHC, WB, ELISA

In Publikationen genannte Anwendungen:

IF, IHC, WB

Getestete Reaktivität:

Human, Maus, Ratte

Zitierte Arten:

Maus, Ratte

Hinweis-IHC: Antigenmaskierung mit TE-Puffer pH 9,0 empfohlen. (*) Wahlweise kann die Antigenmaskierung auch mit Citratpuffer pH 6,0 erfolgen.

Positivkontrollen:

WB : HeLa-Zellen, humanes Hirngewebe, Maushirngewebe, Maushodengewebe

IHC : humanes Ösophaguskarzinomgewebe,

IF : HepG2-Zellen,

Hintergrundinformationen

GPSM1, also named as AGS3, is a receptor-independent G protein activator that has been implicated in multiple biological events such as brain development, neuroplasticity and addiction, cardiac function, Golgi structure/function, macroautophagy and metabolism. It contains seven tetratricopeptide repeats in its N-terminal half and four G-protein regulatory (GPR) motifs in its C-terminal half. It has been shown that AGS3 could regulate the orientation of the mitotic spindle, cAMP production, membrane protein transport, and asymmetric cell division by binding preferentially to inactive Gai/o subunits complexed with guanine dinucleotide phosphate (GDP) at multiple G-protein regulatory or GoLoco motif repeats. It also plays an important anti-apoptotic role through enhancing the phosphorylation of cyclic AMP response element-binding protein (p-CREB).

Bemerkenswerte Veröffentlichungen

Verfasser	Pubmed ID	Journal	Anwendung
Jing Yan	36434066	Nat Commun	WB,IHC,IF
Xuzi Cai	33220708	J Ovarian Res	WB,IHC

Lagerung

Lagerungsbedingungen:

Bei -20°C lagern. Nach dem Versand ein Jahr lang stabil

Lagerungspuffer:

PBS mit 0.02% Natriumazid und 50% Glycerin pH 7.3.

Aliquotieren ist nicht notwendig bei -20°C Lagerung

*** 20ul-Größen enthalten 0.1% BSA

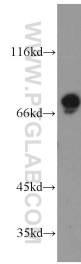
For technical support and original validation data for this product please contact:

T: 1 (888) 4PTGLAB (1-888-478-4522) (toll free in USA), or 1(312) 455-8498 (outside USA)

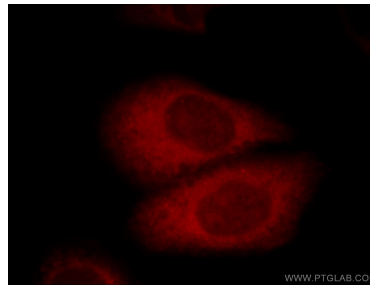
E: proteintech@ptglab.com
W: ptglab.com

This product is exclusively available under Proteintech Group brand and is not available to purchase from any other manufacturer.

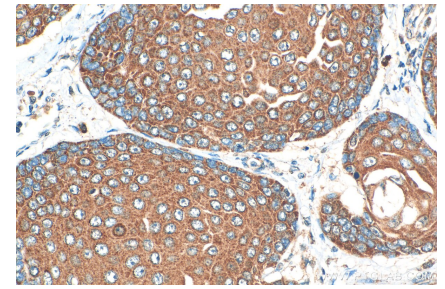
Ausgewählte Validierungsdaten



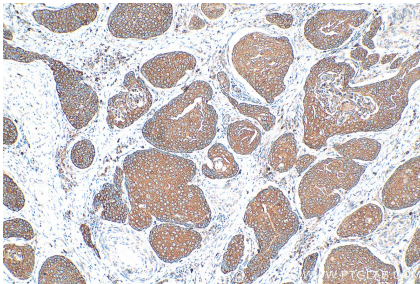
HeLa cells were subjected to SDS PAGE followed by western blot with 11483-1-AP (AGS3 antibody) at dilution of 1:600 incubated at room temperature for 1.5 hours.



Immunofluorescent analysis of HepG2 cells, using GPSP1 antibody 11483-1-AP at 1:25 dilution and Rhodamine-labeled goat anti-rabbit IgG (red).



Immunohistochemical analysis of paraffin-embedded human oesophagus cancer tissue slide using 11483-1-AP (GPSP1 antibody) at dilution of 1:200 (under 40x lens). Heat mediated antigen retrieval with Tris-EDTA buffer (pH 9.0).



Immunohistochemical analysis of paraffin-embedded human oesophagus cancer tissue slide using 11483-1-AP (GPSP1 antibody) at dilution of 1:200 (under 10x lens). Heat mediated antigen retrieval with Tris-EDTA buffer (pH 9.0).