

Nur für Forschungszwecke

APOL1 Polyklonaler Antikörper

Katalog-Nr.: 11486-2-AP

Vorgestelltes Produkt

21 Publikationen



Allgemeine Informationen

Katalog-Nr.: 11486-2-AP	GenBank-Zugangsnummer: BC017331	Reinigungsmethode: Antigen-Affinitätsreinigung
Größe: 150ul, Konzentration: 500 µg/ml von Nanodrop;	GeneID (NCBI): 8542	Empfohlene Verdünnungen: WB 1:500-1:1000 IP 0.5-4.0 µg für IP und 1:500-1:1000 für WB
Wirt: Kaninchen	Vollständiger Name: apolipoprotein L, 1	IHC 1:50-1:4000 IF 1:10-1:100
Isotyp: IgG	Berechnete Masse: 44 kDa	
Immunogen Katalognummer: AG2016	Beobachtete Masse: 39 kDa	

Anwendungen

Geprüfte Anwendungen:
FC, IF, IHC, IP, WB, ELISA

In Publikationen genannte Anwendungen:
IF, IHC, IP, WB

Getestete Reaktivität:
Human

Zitierte Arten:
Human, Maus

Hinweis-IHC: Antigenmaskierung mit TE-Puffer pH 9,0 empfohlen. (*) Wahlweise kann die Antigenmaskierung auch mit Citratpuffer pH 6,0 erfolgen.

Positivkontrollen:

WB: humanes Blutgewebe, A2780-Zellen, A549-Zellen, HeLa-Zellen, HepG2-Zellen, humanes Plasmagewebe, MCF-7-Zellen, SKOV-3-Zellen, SW 1990-Zellen

IP: HepG2-Zellen, humanes Plasmagewebe

IHC: humanes Nierengewebe, humanes Hodengewebe, humanes Lebergewebe, humanes Milzgewebe, humanes Pankreasgewebe, Mausnierengewebe

IF: HepG2-Zellen,

Hintergrundinformationen

Human apolipo-protein L1 (APOL1) is a minor component of plasma high density lipoprotein (HDL) particles, acting as an interacting protein of apolipoprotein A1 (ApoA1). The human ApoL protein family was thought to be predominantly involved in lipid transport and metabolism. APOL1 is also involved in host innate immunity against Trypanosoma parasites. Once activated, APOL1 can lyse the parasite and protect human from infection. Genetic variants in APOL1 gene, which are found in African ancestry with high frequency, associate with chronic kidney disease, like focal segmental glomerulosclerosis (FSGS), HIV-associated nephropathy (HIVAN), and hypertensive nephropathy. APOL1 share structural and functional similarities with proteins of the Bcl-2 family and may have roles in apoptosis and autophagy. It is notable that APOL1 exists only in human and a few other primate species, and mouse does not express an APOL1 orthologue. This antibody recognizes the endogenous APOL1 of 39-45 kDa in blood lysate.

Bemerkenswerte Veröffentlichungen

Verfasser	Pubmed ID	Journal	Anwendung
Jyoti Pant	34559857	PLoS Pathog	WB
David H Vandenborgh	36449077	Pflugers Arch	IF
Xiaohui Liu	29123261	Br J Cancer	IHC

Lagerung

Lagerungsbedingungen:

Bei -20°C lagern. Nach dem Versand ein Jahr lang stabil

Lagerungspuffer:

PBS mit 0.02% Natriumazid und 50% Glycerin pH 7.3.

Aliquotieren ist nicht notwendig bei -20°C Lagerung

*** 20ul-Größen enthalten 0.1% BSA

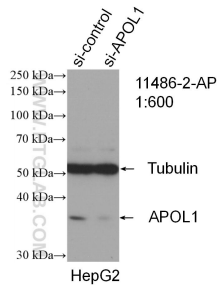
For technical support and original validation data for this product please contact:

T: 1 (888) 4PTGLAB (1-888-478-4522) (toll free in USA), or 1(312) 455-8498 (outside USA)

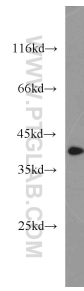
E: proteintech@ptglab.com
W: ptglab.com

This product is exclusively available under Proteintech Group brand and is not available to purchase from any other manufacturer.

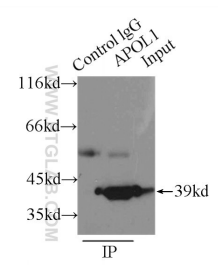
Ausgewählte Validierungsdaten



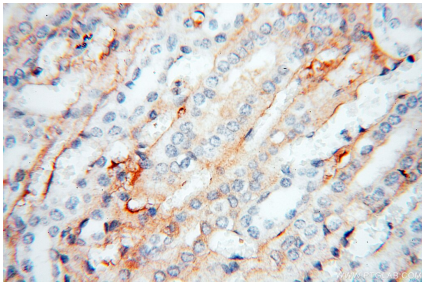
WB result of APOL1 antibody (11486-2-AP; 1:600; incubated at room temperature for 1.5 hours) with sh-Control and sh-APOL1 transfected HepG2 cells.



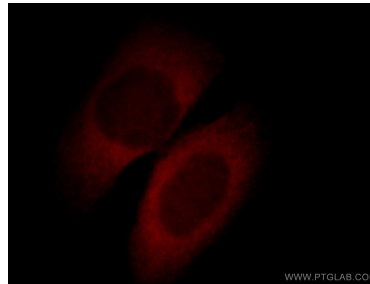
human blood were subjected to SDS PAGE followed by western blot with 11486-2-AP (APOL1 antibody) at dilution of 1:1000 incubated at room temperature for 1.5 hours.



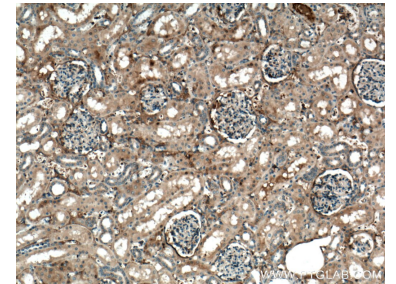
IP Result of anti-APOL1 (IP:11486-2-AP, 3ug; Detection:11486-2-AP 1:500) with HepG2 cells lysate 6000ug.



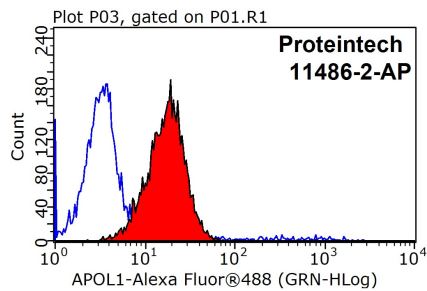
Immunohistochemical analysis of paraffin-embedded human kidney using 11486-2-AP (APOL1 antibody) at dilution of 1:50 (under 40x lens).



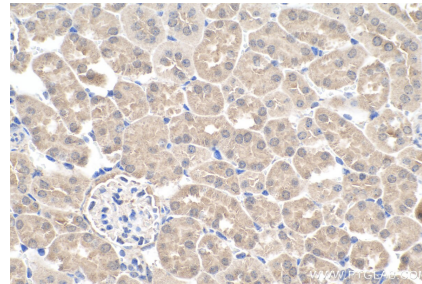
Immunofluorescent analysis of fixed HepG2 cells using 11486-2-AP (APOL1 antibody) at dilution of 1:25.



Immunohistochemical analysis of paraffin-embedded human kidney tissue slide using 11486-2-AP (APOL1 antibody) at dilution of 1:200 (under 10x lens). Heat mediated antigen retrieval with Tris-EDTA buffer (pH 9.0).



1X10⁶ HepG2 cells were stained with 0.2ug APOL1 antibody (11486-2-AP, red) and control antibody (blue). Fixed with 90% MeOH blocked with 3% BSA (30 min). Alexa Fluor 488-conjugated AffiniPure Goat Anti-Rabbit IgG(H+L) with dilution 1:1000.



Immunohistochemical analysis of paraffin-embedded mouse kidney tissue slide using 11486-2-AP (APOL1 antibody) at dilution of 1:4000 (under 40x lens). Heat mediated antigen retrieval with Tris-EDTA buffer (pH 9.0).