

Allgemeine Informationen

Katalog-Nr.:

11501-2-AP

Größe:

150ul , Konzentration: 550 µg/ml von Nanodrop und 227 µg/ml durch die Bradford-Methode mit BSA als Standard;

Wirt:

Kaninchen

Isotyp:

IgG

Immunogen Katalognummer:

AG2037

GenBank-Zugangsnummer:

BC017251

GeneID (NCBI):

433

Vollständiger Name:

asialoglycoprotein receptor 2

Berechnete Masse:

39 kDa

Beobachtete Masse:

39 kDa

Reinigungsmethode:

Antigen-Affinitätsreinigung

Empfohlene Verdünnungen:

WB 1:200-1:1000
IP 0.5-4.0 ug für IP und 1:200-1:1000 für WB
IHC 1:50-1:500

Anwendungen

Geprüfte Anwendungen:

FC, IHC, IP, WB, ELISA

Getestete Reaktivität:

Human

Hinweis-IHC: Antigenmaskierung mit TE-Puffer pH 9,0 empfohlen. (*) Wahlweise kann die Antigenmaskierung auch mit Citratpuffer pH 6,0 erfolgen.

Positivkontrollen:

WB : humanes Lebergewebe,

IP : L02-Zellen,

IHC : humanes Lebergewebe,

Hintergrundinformationen

Asialoglycoprotein receptor (ASGPR), also known as the hepatic galactose/N-acetylglucosamine (GlcNAc) receptor or Ashwell receptor, is a C-type lectin expressed exclusively in hepatic parenchymal cells. ASGPR consists of two subunits, a major subunit (ASGR1, HL-1) and a minor subunit (ASGR2, HL-2), and specifically recognizes terminal β -linked galactose or GlcNAc on circulating glycoproteins or cells. This receptor plays a critical role in serum glycoprotein homeostasis by mediating the endocytosis and lysosomal degradation of glycoproteins that contain terminal galactose or GlcNAc residues. ASGPR may facilitate hepatic infection by multiple viruses including hepatitis B, and is also a target for liver-specific drug delivery.

Lagerung

Lagerungsbedingungen:

Bei -20°C lagern. Nach dem Versand ein Jahr lang stabil

Lagerungspuffer:

PBS mit 0.02% Natriumazid und 50% Glycerin pH 7.3.

Aliquotieren ist nicht notwendig bei -20°C Lagerung

*** 20ul-Größen enthalten 0.1% BSA

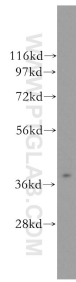
For technical support and original validation data for this product please contact:

T: 1 (888) 4PTGLAB (1-888-478-4522) (toll free in USA), or 1(312) 455-8498 (outside USA)

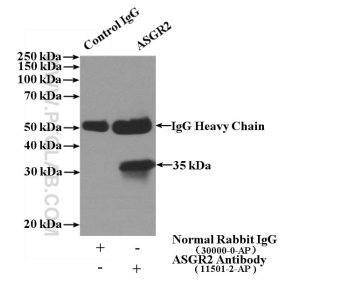
E: proteintech@ptglab.com
W: ptglab.com

This product is exclusively available under Proteintech Group brand and is not available to purchase from any other manufacturer.

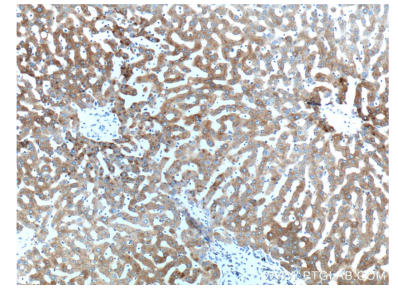
Ausgewählte Validierungsdaten



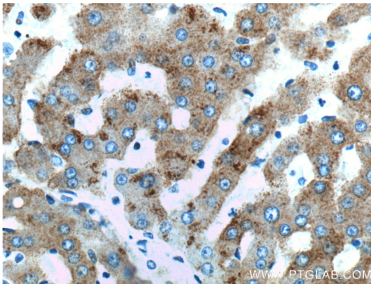
human liver tissue were subjected to SDS PAGE followed by western blot with 11501-2-AP (ASGR2 antibody) at dilution of 1:400 incubated at room temperature for 1.5 hours.



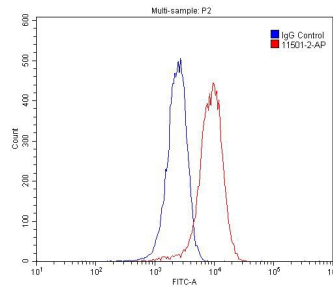
IP Result of anti-ASGR2 (IP:11501-2-AP, 4ug; Detection:11501-2-AP 1:300) with L02 cells lysate 1800ug.



Immunohistochemical analysis of paraffin-embedded human liver tissue slide using 11501-2-AP (ASGR2 Antibody) at dilution of 1:200 (under 10x lens).



Immunohistochemical analysis of paraffin-embedded human liver tissue slide using 11501-2-AP (ASGR2 Antibody) at dilution of 1:200 (under 40x lens).



1x10⁶ HepG2 cells were stained with 0.2ug ASGR2 antibody (11501-2-AP, red) and control antibody (blue). Fixed with 4% PFA blocked with 3% BSA (30 min). Alexa Fluor 488-conjugated AffiniPure Goat Anti-Rabbit IgG(H+L) with dilution 1:1500.