

Nur für Forschungszwecke

PTP4A1/PRL1 Polyklonaler Antikörper



Katalog-Nr.:11508-1-AP

Vorgestelltes Produkt

6 Publikationen

Allgemeine Informationen

Katalog-Nr.:
11508-1-AP

Größe:
150ul , Konzentration: 300 µg/ml von
Nanodrop und 233 µg/ml durch die
Bradford-Methode mit BSA als
Standard;

Wirt:
Kaninchen

Isotyp:
IgG

Immunogen Katalognummer:
AG2067

GenBank-Zugangsnummer:
BC023975

GeneID (NCBI):
7803

Vollständiger Name:
protein tyrosine phosphatase type
IVA, member 1

Berechnete Masse:
20 kDa

Beobachtete Masse:
18-20 kDa

Reinigungsmethode:

Antigen-Affinitätsreinigung

Empfohlene Verdünnungen:

WB 1:500-1:1000

IHC 1:50-1:500

Anwendungen

Geprüfte Anwendungen:

IHC, WB, ELISA

In Publikationen genannte Anwendungen:

IHC, WB

Getestete Reaktivität:

Human, Maus

Zitierte Arten:

Human, Maus

Hinweis-IHC: Antigendemaskierung mit TE-Puffer pH 9,0 empfohlen. (*) Wahlweise kann die Antigendemaskierung auch mit Citratpuffer pH 6,0 erfolgen.

Positivkontrollen:

WB : HEK-293-Zellen, HeLa-Zellen, HepG2-Zellen, MCF-7-Zellen

IHC : humanes Pankreaskarzinomgewebe,

Hintergrundinformationen

PTP4A1 (protein tyrosine phosphatase type IVA, member 1), also named as PRL1, HH72, PRL-1, PTP(CAAX1), PTPCAAX1, DKFZp779M0721, belongs to the protein-tyrosine phosphatase family, which play an important role in maintaining appropriate tyrosine phosphorylation levels in the cell during development and tissue regeneration (PMID:19341304). PTP4A1 is a PTPase and that it is highly expressed in growing hepatic cells and some tumor cell lines and is located primarily in the cell nucleus, and its overexpression modulates the growth of cells (PMID:8196618). PTP4A1 can exist as dimer, trimer and higher oligomers in vivo (PMID: 15571731, 18224294).

Bemerkenswerte Veröffentlichungen

Verfasser	Pubmed ID	Journal	Anwendung
Chang Zhou	26722251	Oncol Lett	WB
Zhou Chang C	23696794	PLoS One	WB
Jessica Yun	35020952	Int J Cancer	WB,IHC

Lagerung

Lagerungsbedingungen:

Bei -20°C lagern. Nach dem Versand ein Jahr lang stabil

Lagerungspuffer:

PBS mit 0.02% Natriumazid und 50% Glycerin pH 7.3.

Aliquotieren ist nicht notwendig bei -20°C Lagerung

*** 20ul-Größen enthalten 0.1% BSA

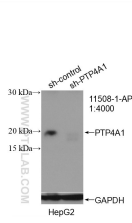
For technical support and original validation data for this product please contact:

T: 1 (888) 4PTGLAB (1-888-478-4522) (toll free in USA), or 1(312) 455-8498 (outside USA)

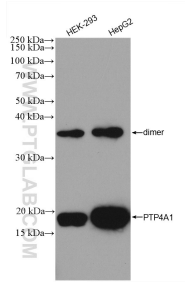
E: proteintech@ptglab.com
W: ptglab.com

This product is exclusively available under Proteintech Group brand and is not available to purchase from any other manufacturer.

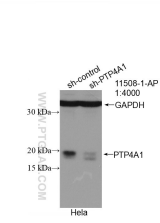
Ausgewählte Validierungsdaten



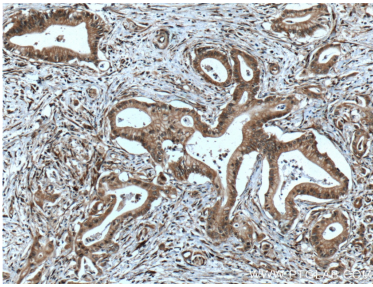
WB result of PTP4A1/PRL1 antibody (11508-1-AP; 1:4000; incubated at room temperature for 1.5 hours) with sh-Control and sh-PTP4A1/PRL1 transfected HepG2 cells.



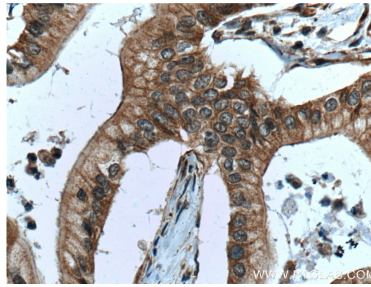
Various lysates were subjected to SDS PAGE followed by western blot with 11508-1-AP (PTP4A1/PRL1 antibody) at dilution of 1:600 incubated at room temperature for 1.5 hours.



WB result of PTP4A1/PRL1 antibody (11508-1-AP; 1:4000; incubated at room temperature for 1.5 hours) with sh-Control and sh-PTP4A1/PRL1 transfected HeLa cells.



Immunohistochemical analysis of paraffin-embedded human pancreas cancer tissue slide using 11508-1-AP (PTP4A1/PRL1 antibody) at dilution of 1:100 (under 10x lens. Heat mediated antigen retrieval with Tris-EDTA buffer (pH 9.0).



Immunohistochemical analysis of paraffin-embedded human pancreas cancer tissue slide using 11508-1-AP (PTP4A1/PRL1 antibody) at dilution of 1:100 (under 40x lens. Heat mediated antigen retrieval with Tris-EDTA buffer (pH 9.0).