

Nur für Forschungszwecke

YME1L1 Polyklonaler Antikörper

Katalog-Nr.: 11510-1-AP

Vorgestelltes Produkt

63 Publikationen



Allgemeine Informationen

Katalog-Nr.:

11510-1-AP

Größe:

150ul, Konzentration: 500 µg/ml von

Nanodrop;

Wirt:

Kaninchen

Isotyp:

IgG

Immunogen Katalognummer:

AG2069

GenBank-Zugangsnummer:

BC023507

GeneID (NCBI):

10730

Vollständiger Name:

YME1-like 1 (*S. cerevisiae*)

Berechnete Masse:

716 aa, 80 kDa

Beobachtete Masse:

63 kDa

Reinigungsmethode:

Antigen-Affinitätsreinigung

Empfohlene Verdünnungen:

WB 1:500-1:2000

IP 0.5-4.0 µg für IP und 1:500-1:1000

für WB

IF 1:10-1:100

Anwendungen

Geprüfte Anwendungen:

IF, IP, WB, ELISA

In Publikationen genannte Anwendungen:

IF, IHC, IP, WB

Getestete Reaktivität:

Human, Maus, Ratte

Zitierte Arten:

Affe, Human, Maus, Ratte

Positivkontrollen:

WB: COLO 320-Zellen, HeLa-Zellen, HepG2-Zellen, MCF-7-Zellen

IP: HeLa-Zellen,

IF: HepG2-Zellen,

Hintergrundinformationen

YME1L1(ATP-dependent zinc metalloprotease) is also named as FTSH1, YME1L, Meg-4, PAMP. YME1L1 plays a phylogenetically conserved role in mitochondrial protein metabolism. It also ensures cell proliferation, maintains normal cristae morphology and complex I respiration activity, promotes antiapoptotic activity and protects mitochondria from the accumulation of oxidatively damaged membrane proteins. YME1L1 can prevent mitochondrial DNA inserting into nuclear. It has 3 isoforms produced by alternative splicing with the molecular weight of 86 kDa, 80 kDa and 76 kDa. This protein can migrate with a molecular weight of about 55-63 kDa, which is the size of the mature YME1L1 protein(PMID:22252130; 22354088).

Bemerkenswerte Veröffentlichungen

Verfasser	Pubmed ID	Journal	Anwendung
Olga Zurita Rendón	30061372	Mol Cell Biol	
Ana A Baburamani	26393574	Int J Mol Sci	WB
Barbara M Crisol	31494696	Eur J Nutr	WB

Lagerung

Lagerungsbedingungen:

Bei -20°C lagern. Nach dem Versand ein Jahr lang stabil

Lagerungspuffer:

PBS mit 0.02% Natriumazid und 50% Glycerin pH 7.3.

Aliquotieren ist nicht notwendig bei -20°C Lagerung

*** 20ul-Größen enthalten 0.1% BSA

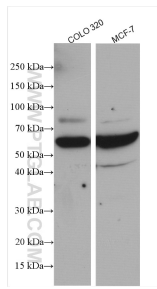
For technical support and original validation data for this product please contact:

T: 1 (888) 4PTGLAB (1-888-478-4522) (toll free in USA), or 1(312) 455-8498 (outside USA)

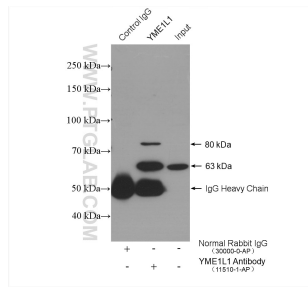
E: proteintech@ptglab.com
W: ptglab.com

This product is exclusively available under Proteintech Group brand and is not available to purchase from any other manufacturer.

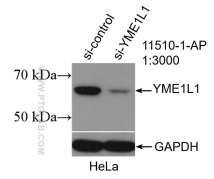
Ausgewählte Validierungsdaten



Various lysates were subjected to SDS PAGE followed by western blot with 11510-1-AP (YME1L1 antibody) at dilution of 1:1000 incubated at room temperature for 1.5 hours.



IP result of anti-YME1L1 (IP:11510-1-AP, 4ug; Detection:11510-1-AP 1:500) with HeLa cells lysate 1280 ug.



WB result of YME1L1 antibody (11510-1-AP; 1:3000; incubated at room temperature for 1.5 hours) with sh-Control and sh-YME1L1 transfected HeLa cells.



Immunofluorescent analysis of HepG2 cells using 11510-1-AP (YME1L1 antibody) at dilution of 1:25 and Rhodamine-Goat anti-Rabbit IgG.