

Allgemeine Informationen

Katalog-Nr.: 11539-1-AP	GenBank-Zugangsnummer: BC014070	Reinigungsmethode: Antigen-Affinitätsreinigung
Größe: 150ul , Konzentration: 400 µg/ml von Nanodrop und 293 µg/ml durch die Bradford-Methode mit BSA als Standard;	GeneID (NCBI): 9500	Empfohlene Verdünnungen: WB 1:500-1:1000 IHC 1:20-1:200
Wirt: Kaninchen	Vollständiger Name: melanoma antigen family D, 1	
Isotyp: IgG	Berechnete Masse: 86 kDa; 92 kDa	
Immunogen Katalognummer: AG2109	Beobachtete Masse: 66 kDa, 92-95 kDa	

Anwendungen

Geprüfte Anwendungen: FC, IHC, WB, ELISA	Positivkontrollen: WB : HEK-293-Zellen, Apoptotisierte HeLa-Zellen, HeLa-Zellen, humanes Hirngewebe IHC : humanes Gliomgewebe,
In Publikationen genannte Anwendungen: IF, IHC, IP, WB	
Getestete Reaktivität: Human, Maus, Ratte	
Zitierte Arten: Ratte	
Hinweis-IHC: Antigendemaskierung mit TE-Puffer pH 9,0 empfohlen. (*) Wahlweise kann die Antigendemaskierung auch mit Citratpuffer pH 6,0 erfolgen.	

Hintergrundinformationen

MAGED1 (also known as NRAGE or Dlxin-1) is a member of the type II melanoma antigen (MAGE) family of protein. MAGED1 can interact with the nerve growth factor receptor p75NTR, antagonize the association of p75NTR with TrkA, inhibit cell cycle progression, and facilitate p75NTR-mediated apoptosis (PMID: 10985348). It has been reported that MAGED1 binds Dlx5 and regulates its transcriptional function. In vivo, MAGED1 binds not only Dlx5 but also Dlx7 and Msx2 and forms homomultimers (PMID: 11084035). MAGED1 knockout mice show depressive behavior and impairments of circadian rhythm (PMID: 20300063; 23314527).

Bemerkenswerte Veröffentlichungen

Verfasser	Pubmed ID	Journal	Anwendung
Meng Li	36585447	Sci Rep	WB, IHC, IF, IP

Lagerung

Lagerungsbedingungen:
Bei -20°C lagern. Nach dem Versand ein Jahr lang stabil
Lagerungspuffer:
PBS mit 0.02% Natriumazid und 50% Glycerin pH 7.3.
Aliquotieren ist nicht notwendig bei -20°C Lagerung

*** 20ul-Größen enthalten 0.1% BSA

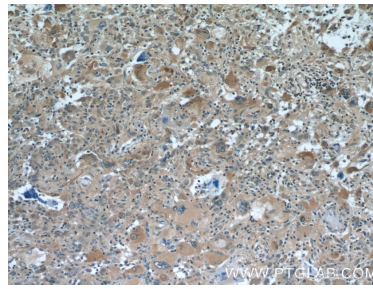
For technical support and original validation data for this product please contact:
T: 1 (888) 4PTGLAB (1-888-478-4522) (toll free in USA), or 1(312) 455-8498 (outside USA)
E: proteintech@ptglab.com
W: ptglab.com

This product is exclusively available under Proteintech Group brand and is not available to purchase from any other manufacturer.

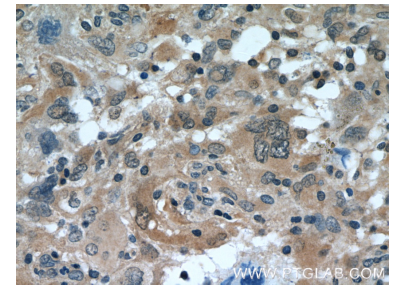
Ausgewählte Validierungsdaten



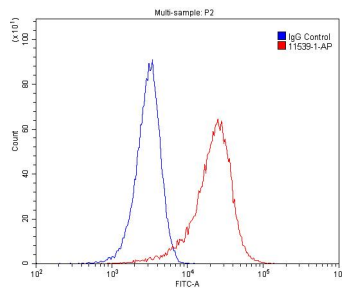
HEK-293 cells were subjected to SDS PAGE followed by western blot with 11539-1-AP (MAGED1 antibody) at dilution of 1:500 incubated at room temperature for 1.5 hours.



Immunohistochemical analysis of paraffin-embedded human gliomas tissue slide using 11539-1-AP (MAGED1 Antibody) at dilution of 1:100 (under 10x lens).



Immunohistochemical analysis of paraffin-embedded human gliomas tissue slide using 11539-1-AP (MAGED1 Antibody) at dilution of 1:100 (under 40x lens).



1X10⁶ HeLa cells were stained with 0.2ug MAGED1 antibody (11539-1-AP, red) and control antibody (blue). Cells were fixed with 4% PFA and permeabilized with 0.1% Triton X-100. Alexa Fluor 488-conjugated AffiniPure Goat Anti-Rabbit IgG(H+L) with dilution 1:1500.