

## Allgemeine Informationen

<b>Katalog-Nr.:</b> 11550-1-AP	<b>GenBank-Zugangsnummer:</b> BC001516	<b>Reinigungsmethode:</b> Antigen-Affinitätsreinigung
<b>Größe:</b> 150ul, Konzentration: 300 µg/ml von Nanodrop und 267 µg/ml durch die Bradford-Methode mit BSA als Standard;	<b>GeneID (NCBI):</b> 4212	<b>Empfohlene Verdünnungen:</b> WB 1:1000-1:4000 IHC 1:400-1:1600
<b>Wirt:</b> Kaninchen	<b>Vollständiger Name:</b> Meis homeobox 2	
<b>Isotyp:</b> IgG	<b>Berechnete Masse:</b> 381 aa, 42 kDa	
<b>Immunogen Katalognummer:</b> AG2096	<b>Beobachtete Masse:</b> 56 kDa	

## Anwendungen

<b>Geprüfte Anwendungen:</b> IHC, WB, ELISA	<b>Positivkontrollen:</b> WB : Jurkat-Zellen, A549-Zellen, HCT 116-Zellen, LNCaP-Zellen, PC-3-Zellen IHC : humanes Prostatakarzinomgewebe,
<b>In Publikationen genannte Anwendungen:</b> IHC	
<b>Getestete Reaktivität:</b> Human, Maus, Ratte	
<b>Zitierte Arten:</b> Maus	
<b>Hinweis-IHC: Antigendemaskierung mit TE-Puffer pH 9,0 empfohlen. (*) Wahlweise kann die Antigendemaskierung auch mit Citratpuffer pH 6,0 erfolgen.</b>	

## Hintergrundinformationen

MEIS2, also named as Meis1-related protein 1 or MRG1, is a 477 amino acid protein, which contains one homeobox DNA-binding domain and belongs to the TALE/MEIS homeobox family. MEIS2 is expressed in various tissues and at high level in the lymphoid organs of hematopoietic tissues. MEIS2 localizes in the nucleus and is involved in transcriptional regulation. MEIS2 is a critical downstream effector within an essential homeoprotein network that serving a rate-limiting regulatory role in MLL leukemogenesis. MEIS2 as midbrain specific marker is upregulated concomitantly with the morphological transformation of hindbrain to midbrain.

## Bemerkenswerte Veröffentlichungen

Verfasser	Pubmed ID	Journal	Anwendung
Russell Meaghan K MK	22315423	Proc Natl Acad Sci U S A	IHC

## Lagerung

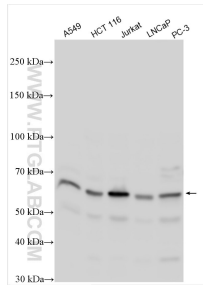
**Lagerungsbedingungen:**  
Bei -20°C lagern. Nach dem Versand ein Jahr lang stabil  
**Lagerungspuffer:**  
PBS mit 0.02% Natriumazid und 50% Glycerin pH 7.3.  
Aliquotieren ist nicht notwendig bei -20°C Lagerung

\*\*\* 20ul-Größen enthalten 0.1% BSA

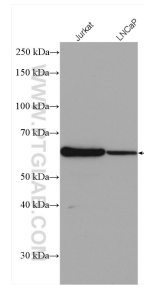
For technical support and original validation data for this product please contact:  
T: 1 (888) 4PTGLAB (1-888-478-4522) (toll free in USA), or 1(312) 455-8498 (outside USA)  
E: proteintech@ptglab.com  
W: ptglab.com

This product is exclusively available under Proteintech Group brand and is not available to purchase from any other manufacturer.

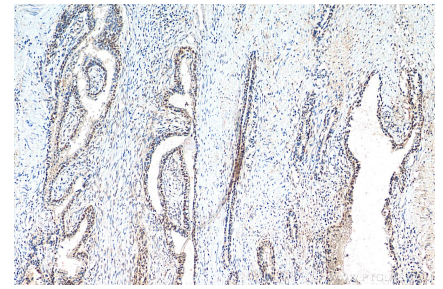
## Ausgewählte Validierungsdaten



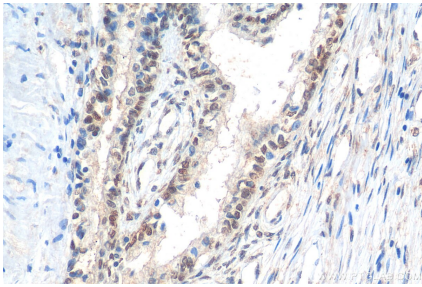
Various lysates were subjected to SDS PAGE followed by western blot with 11550-1-AP (MEIS2 antibody) at dilution of 1:1000 incubated at room temperature for 1.5 hours.



Various lysates were subjected to SDS PAGE followed by western blot with 11550-1-AP (MEIS2 antibody) at dilution of 1:2000 incubated at room temperature for 1.5 hours.



Immunohistochemical analysis of paraffin-embedded human prostate cancer tissue slide using 11550-1-AP (MEIS2 antibody) at dilution of 1:800 (under 10x lens). Heat mediated antigen retrieval with Tris-EDTA buffer (pH 9.0).



Immunohistochemical analysis of paraffin-embedded human prostate cancer tissue slide using 11550-1-AP (MEIS2 antibody) at dilution of 1:800 (under 40x lens). Heat mediated antigen retrieval with Tris-EDTA buffer (pH 9.0).